

**Helicobacter Pylori Antibody - With BSA and Azide**  
**Rabbit Polyclonal Antibody**  
**Catalog # AH10979****Specification**

---

**Helicobacter Pylori Antibody - With BSA and Azide - Product Information**

Application	,14,3,4,
Host	Rabbit
Clonality	Polyclonal
Isotype	Rabbit / IgG
Calculated MW	Multiple KDa

**Helicobacter Pylori Antibody - With BSA and Azide - Additional Information****Format**

200ug/ml of Ab purified from rabbit anti-serum by Protein A. Prepared in 10mM PBS with 0.05% BSA & 0.05% azide. Also available WITHOUT BSA at 1.0mg/ml.

**Storage**

Store at 2 to 8°C. Antibody is stable for 24 months.

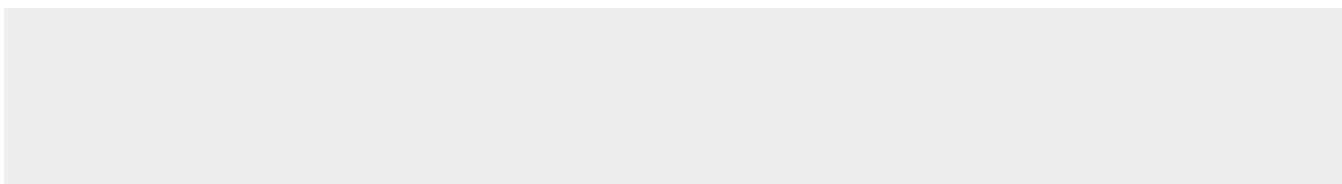
**Precautions**

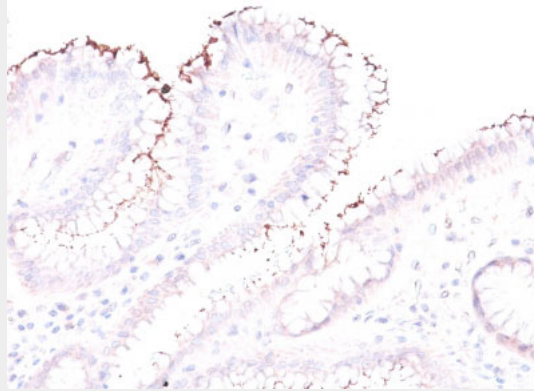
Helicobacter Pylori Antibody - With BSA and Azide is for research use only and not for use in diagnostic or therapeutic procedures.

**Helicobacter Pylori Antibody - With BSA and Azide - Protein Information****Helicobacter Pylori Antibody - With BSA and Azide - Protocols**

Provided below are standard protocols that you may find useful for product applications.

- [Western Blot](#)
- [Blocking Peptides](#)
- [Dot Blot](#)
- [Immunohistochemistry](#)
- [Immunofluorescence](#)
- [Immunoprecipitation](#)
- [Flow Cytometry](#)
- [Cell Culture](#)

**Helicobacter Pylori Antibody - With BSA and Azide - Images**



Formalin-fixed, paraffin-embedded human Stomach stained with Helicobacter pylori Rabbit Polyclonal Antibody.

#### **Helicobacter Pylori Antibody - With BSA and Azide - Background**

The spiral shaped bacterium *Helicobacter pylori* is strongly associated with inflammation of the stomach and is also implicated in the development of gastric malignancy. *H. pylori* is known to cause peptic ulcers and chronic gastritis in human. It is associated with duodenal ulcers and may be involved in development of adenocarcinoma and low-grade lymphoma of mucosa associated lymphoid tissue in the stomach. This antibody stains the individual *H. pylori* bacterium when it presents on the surface of the epithelium or in the cytoplasm of the epithelial cells in biopsy tissue sections from the antrum and body of the stomach.

#### **Helicobacter Pylori Antibody - With BSA and Azide - References**

Fiorentino M et. al. Infect Immun 81:876-883 (2013). Moodley Y et. al. PLoS Pathog 8(5): e1002693. doi:10.1371/journal.ppat.1002693 (2012)