

ER-beta1 (Estrogen Receptor beta-1) Antibody
Mouse Monoclonal Antibody [Clone ERb455]
Catalog # AH11196**Specification**

ER-beta1 (Estrogen Receptor beta-1) Antibody - Product Information

Application	IF, FC
Primary Accession	O92731
Other Accession	2100 , 660607
Reactivity	Human, Mouse, Rat, Monkey, Pig, Sheep, Horse
Host	Mouse
Clonality	Monoclonal
Isotype	Mouse / IgG2a
Calculated MW	53-59kDa KDa

ER-beta1 (Estrogen Receptor beta-1) Antibody - Additional Information**Gene ID** 2100**Other Names**

Estrogen receptor beta, ER-beta, Nuclear receptor subfamily 3 group A member 2, ESR2, ESTRB, NR3A2

Application Note

IF~~1:50~200
FC~~1:10~50

Storage

Store at 2 to 8°C. Antibody is stable for 24 months.

Precautions

ER-beta1 (Estrogen Receptor beta-1) Antibody is for research use only and not for use in diagnostic or therapeutic procedures.

ER-beta1 (Estrogen Receptor beta-1) Antibody - Protein Information**Name** ESR2**Synonyms** ESTRB, NR3A2**Function**

Nuclear hormone receptor. Binds estrogens with an affinity similar to that of ESR1/ER-alpha, and activates expression of reporter genes containing estrogen response elements (ERE) in an estrogen- dependent manner (PubMed: <http://www.uniprot.org/citations/20074560>).

Cellular Location

Nucleus {ECO:0000255|PROSITE-ProRule:PRU00407, ECO:0000269|PubMed:19126643, ECO:0000269|PubMed:20074560}

Tissue Location

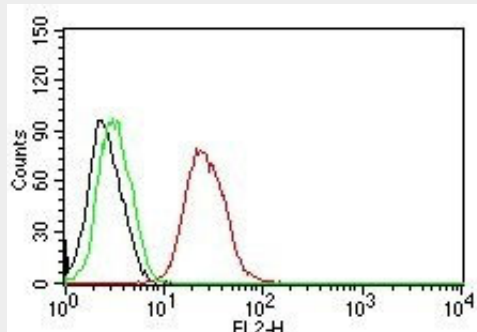
[Isoform 1]: Expressed in testis and ovary, and at a lower level in heart, brain, placenta, liver, skeletal muscle, spleen, thymus, prostate, colon, bone marrow, mammary gland and uterus Also found in uterine bone, breast, and ovarian tumor cell lines, but not in colon and liver tumors. [Isoform 4]: Expressed in the testis. [Isoform 6]: Expressed in testis, placenta, skeletal muscle, spleen and leukocytes, and at a lower level in heart, lung, liver, kidney, pancreas, thymus, prostate, colon, small intestine, bone marrow, mammary gland and uterus. Not expressed in brain.

ER-beta1 (Estrogen Receptor beta-1) Antibody - Protocols

Provided below are standard protocols that you may find useful for product applications.

- [Western Blot](#)
- [Blocking Peptides](#)
- [Dot Blot](#)
- [Immunohistochemistry](#)
- [Immunofluorescence](#)
- [Immunoprecipitation](#)
- [Flow Cytometry](#)
- [Cell Culture](#)

ER-beta1 (Estrogen Receptor beta-1) Antibody - Images



Flow Cytometry for human ER-beta on MCF-7 Cells. Black: Cells alone; Green: Isotype Control; Red: PE-labeled ER-beta1 Monoclonal Antibody (ERb455).

ER-beta1 (Estrogen Receptor beta-1) Antibody - Background

Estrogen receptors (ER) are members of the steroid/thyroid hormone receptor superfamily of ligand-activated transcription factors. Estrogen receptors, including ER-alpha and ER-beta, contain DNA binding and ligand binding domains and are critically involved in regulating the normal function of reproductive tissues. They are located in the nucleus, though some estrogen receptors associate with the cell surface membrane and can be rapidly activated by exposure of cells to estrogen. ER-alpha and ER-beta are differentially activated by various ligands. Receptor-ligand interactions trigger a cascade of events, including dissociation from heat shock proteins, receptor dimerization, phosphorylation and the association of the hormone activated receptor with specific regulatory elements in target genes. Evidence suggests that ER-alpha and ER-beta may be regulated by distinct mechanisms even though they share many functional characteristics.

ER-beta1 (Estrogen Receptor beta-1) Antibody - References

Skliris GP et. al. J Pathol 2002;197:155-62