

**CELA3B / ELA3B (Pancreatic Function Marker) Antibody - With BSA and Azide**  
**Mouse Monoclonal Antibody [Clone CELA3B/1218 ]**  
**Catalog # AH11228**

**Specification**

---

**CELA3B / ELA3B (Pancreatic Function Marker) Antibody - With BSA and Azide - Product Information**

Application	,3,4,
Primary Accession	<a href="#">P08861</a>
Other Accession	<a href="#">23436</a> , <a href="#">728752</a>
Reactivity	Human
Host	Mouse
Clonality	Monoclonal
Isotype	Mouse / IgG, kappa
Calculated MW	~17kDa KDa

**CELA3B / ELA3B (Pancreatic Function Marker) Antibody - With BSA and Azide - Additional Information**

**Gene ID** 23436

**Other Names**

Chymotrypsin-like elastase family member 3B, 3.4.21.70, Elastase IIIB, Elastase-3B, Protease E, CELA3B, ELA3B

**Storage**

Store at 2 to 8°C. Antibody is stable for 24 months.

**Precautions**

CELA3B / ELA3B (Pancreatic Function Marker) Antibody - With BSA and Azide is for research use only and not for use in diagnostic or therapeutic procedures.

**CELA3B / ELA3B (Pancreatic Function Marker) Antibody - With BSA and Azide - Protein Information**

**Name** CELA3B

**Synonyms** ELA3B

**Function**

Efficient protease with alanine specificity but only little elastolytic activity.

**Tissue Location**

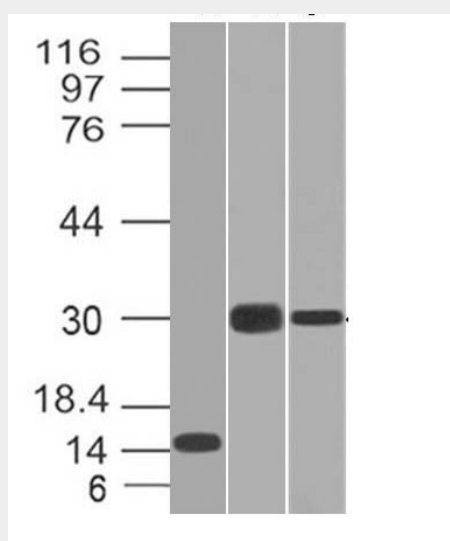
Pancreas. Not detectable in keratinocytes.

**CELA3B / ELA3B (Pancreatic Function Marker) Antibody - With BSA and Azide - Protocols**

Provided below are standard protocols that you may find useful for product applications.

- [Western Blot](#)
- [Blocking Peptides](#)
- [Dot Blot](#)
- [Immunohistochemistry](#)
- [Immunofluorescence](#)
- [Immunoprecipitation](#)
- [Flow Cytometry](#)
- [Cell Culture](#)

#### **CELA3B / ELA3B (Pancreatic Function Marker) Antibody - With BSA and Azide - Images**



Western Blot of Recombinant, Panc-28 and PANC1 Cell Lysates using CELA3B Monoclonal Antibody (CELA3B/1218).

#### **CELA3B / ELA3B (Pancreatic Function Marker) Antibody - With BSA and Azide - Background**

This MAb recognizes a protein of ~17kDa, identified as CELA3B (Chymotrypsin like elastase family member 3B). Elastases form a subfamily of serine proteases that hydrolyze many proteins in addition to elastin. Humans have six elastase genes which encode the structurally similar proteins elastase 1, 2, 2A, 2B, 3A, and 3B. Unlike other elastases, elastase 3B has little elastolytic activity. Like most of the human elastases, elastase 3B is secreted from the pancreas as a zymogen and, like other serine proteases such as trypsin, chymotrypsin and kallikrein; it has a digestive function in the intestine. Elastase 3B preferentially cleaves proteins after alanine residues. Elastase 3B may also function in the intestinal transport and metabolism of cholesterol. Both elastase 3A and elastase 3B have been referred to as protease E and as elastase 1, and excretion of this protein in fecal material is frequently used as a measure of pancreatic function in clinical assays.

#### **CELA3B / ELA3B (Pancreatic Function Marker) Antibody - With BSA and Azide - References**

Shirasu, Y., et al. 1988. Molecular cloning of complementary DNA encoding one of the human pancreatic protease E isozymes. J. Biochem. 104:259-264. | Tani, T., et al. 1988. Identification of a novel class of elastase isozyme, human pancreatic elastase III, by cDNA and genomic gene cloning. J. Biol. Chem. 263: 1231-1239. | Shimada, S., et al. 2002. Pancreatic elastase IIIA and its variants are expressed in pancreatic carcinoma cells. Int. J. Mol. Med. 10: 599-603