

FSH-beta (Follicle Stimulating Hormone-beta) Antibody - With BSA and Azide
Mouse Monoclonal Antibody [Clone FSHb/1062]
Catalog # AH11245**Specification****FSH-beta (Follicle Stimulating Hormone-beta) Antibody - With BSA and Azide - Product Information**

Application	IHC, IF, FC
Primary Accession	P01225
Other Accession	2488 , 36975
Reactivity	Human
Host	Mouse
Clonality	Monoclonal
Isotype	Mouse / IgG1, kappa
Calculated MW	22kDa KDa

FSH-beta (Follicle Stimulating Hormone-beta) Antibody - With BSA and Azide - Additional Information**Gene ID** 2488**Other Names**

Follitropin subunit beta, Follicle-stimulating hormone beta subunit, FSH-B, FSH-beta, Follitropin beta chain, FSHB

Application Note

IHC~~1:100~500<br \>IF~~1:50~200<br \>FC~~1:10~50

Storage

Store at 2 to 8°C. Antibody is stable for 24 months.

Precautions

FSH-beta (Follicle Stimulating Hormone-beta) Antibody - With BSA and Azide is for research use only and not for use in diagnostic or therapeutic procedures.

FSH-beta (Follicle Stimulating Hormone-beta) Antibody - With BSA and Azide - Protein Information**Name** FSHB**Function**

Together with the alpha chain CGA constitutes follitropin, the follicle-stimulating hormone, and provides its biological specificity to the hormone heterodimer. Binds FSHR, a G protein-coupled receptor, on target cells to activate downstream signaling pathways (PubMed:24692546, PubMed:2494176). Follitropin is involved in follicle development and spermatogenesis in reproductive organs (PubMed:407105, PubMed:8220432).

Cellular Location

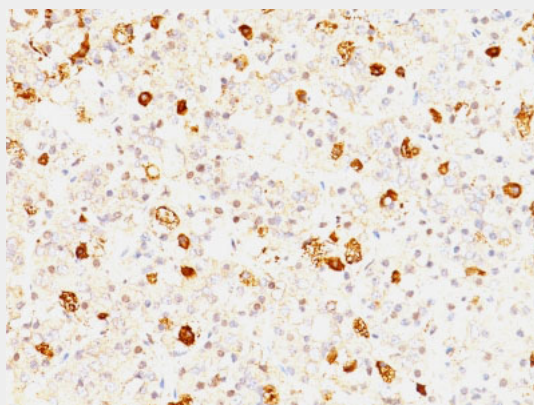
Secreted. Note=Efficient secretion requires dimerization with CGA

FSH-beta (Follicle Stimulating Hormone-beta) Antibody - With BSA and Azide - Protocols

Provided below are standard protocols that you may find useful for product applications.

- [Western Blot](#)
- [Blocking Peptides](#)
- [Dot Blot](#)
- [Immunohistochemistry](#)
- [Immunofluorescence](#)
- [Immunoprecipitation](#)
- [Flow Cytometry](#)
- [Cell Culture](#)

FSH-beta (Follicle Stimulating Hormone-beta) Antibody - With BSA and Azide - Images



Formalin-fixed, paraffin-embedded human Pituitary stained with FSH-beta Monoclonal Antibody (FSHb/1062).

FSH-beta (Follicle Stimulating Hormone-beta) Antibody - With BSA and Azide - Background

This MAb reacts with a protein of 22kDa, identified as beta sub-unit of FSH. It does not cross react with the alpha sub-unit. Follicle stimulating hormone (FSH) is a hormone synthesized and secreted by gonadotrophs in the anterior pituitary gland. In the ovary, FSH stimulates the growth of immature Graafian follicles to maturation. As the follicle grows, it releases inhibin, which deactivates the FSH production. In men, FSH enhances the production of androgen-binding protein by the Sertoli cells of the testis and is critical for spermatogenesis. FSH and LH act synergistically in reproduction. FSH is a useful marker in the classification of pituitary tumors and the study of pituitary disease.

FSH-beta (Follicle Stimulating Hormone-beta) Antibody - With BSA and Azide - References

Schmidt M et al. Pathol Res Pract. 2001;197(10):663-9 | La Rosa S et al. Virchows Arch. 2000 Sep;437(3):264-9 | Zheng W et al. Gynecol Oncol. 2000 Jan;76(1):80-