

Alkaline Phosphatase (Placental) / PLAP (Germ Cell Tumor Marker) Antibody - With BSA and Azide**Mouse Monoclonal Antibody [Clone GM022]****Catalog # AH11260****Specification**

Alkaline Phosphatase (Placental) / PLAP (Germ Cell Tumor Marker) Antibody - With BSA and Azide - Product Information

Application	IHC, IF, FC
Primary Accession	P05187
Other Accession	250 , 284255
Reactivity	Human
Host	Mouse
Clonality	Monoclonal
Isotype	Mouse / IgG2b, kappa
Calculated MW	70kDa KDa

Alkaline Phosphatase (Placental) / PLAP (Germ Cell Tumor Marker) Antibody - With BSA and Azide - Additional Information**Gene ID** 250**Other Names**

Alkaline phosphatase, placental type, 3.1.3.1, Alkaline phosphatase Regan isozyme, Placental alkaline phosphatase 1, PLAP-1, ALPP, PLAP

Application Note

IHC~~1:100~500<br \>IF~~1:50~200<br \>FC~~1:10~50

Storage

Store at 2 to 8°C. Antibody is stable for 24 months.

Precautions

Alkaline Phosphatase (Placental) / PLAP (Germ Cell Tumor Marker) Antibody - With BSA and Azide is for research use only and not for use in diagnostic or therapeutic procedures.

Alkaline Phosphatase (Placental) / PLAP (Germ Cell Tumor Marker) Antibody - With BSA and Azide - Protein Information**Name** ALPP ([HGNC:439](#))**Function**

Alkaline phosphatase that can hydrolyze various phosphate compounds.

Cellular Location

Cell membrane; Lipid-anchor, GPI-anchor

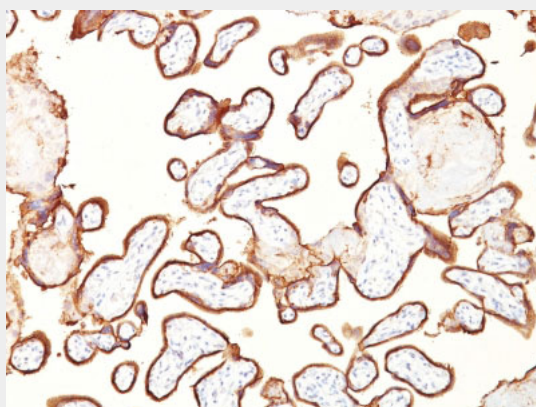
Tissue Location

Detected in placenta (at protein level).

Alkaline Phosphatase (Placental) / PLAP (Germ Cell Tumor Marker) Antibody - With BSA and Azide - Protocols

Provided below are standard protocols that you may find useful for product applications.

- [Western Blot](#)
- [Blocking Peptides](#)
- [Dot Blot](#)
- [Immunohistochemistry](#)
- [Immunofluorescence](#)
- [Immunoprecipitation](#)
- [Flow Cytometry](#)
- [Cell Culture](#)

Alkaline Phosphatase (Placental) / PLAP (Germ Cell Tumor Marker) Antibody - With BSA and Azide - Images

Formalin-fixed, paraffin-embedded human Placenta stained with PLAP Monoclonal Antibody (GM022).

Alkaline Phosphatase (Placental) / PLAP (Germ Cell Tumor Marker) Antibody - With BSA and Azide - Background

Reacts with a 70kDa membrane-bound isozyme (Regan and Nagao type) of Placental Alkaline Phosphatase (PLAP) occurring in the placenta during the 3rd trimester of gestation. It is highly specific for PLAP and shows no cross-reaction with other isozymes of alkaline phosphatase. Anti-PLAP reacts with germ cell tumors and can discriminate between these and other neoplasms. Somatic neoplasms e.g. breast, gastrointestinal, prostatic, and urinary cancers may also immunoreact with antibodies to PLAP. Anti-PLAP positivity in conjunction with anti-keratin negativity favors seminoma over carcinoma. Germ cell tumors are usually anti-keratin positive, but they regularly fail to stain with anti-EMA, whereas most carcinomas stain with anti-EMA. Anti-PLAP has been useful in the diagnosis of gestational trophoblastic disease.Ä

Alkaline Phosphatase (Placental) / PLAP (Germ Cell Tumor Marker) Antibody - With BSA and Azide - References

Wick, MR, et al. 1987; Hum Pathol. 18(9):946-54. |