

**CD50 / ICAM-3 Antibody - With BSA and Azide**  
**Mouse Monoclonal Antibody [Clone ICAM3/1019 ]**  
**Catalog # AH11492****Specification**

---

**CD50 / ICAM-3 Antibody - With BSA and Azide - Product Information**

Application	,1,2,3,4,
Primary Accession	<a href="#">P32942</a>
Other Accession	<a href="#">3385</a> , <a href="#">354563</a>
Reactivity	Human
Host	Mouse
Clonality	Monoclonal
Isotype	Mouse / IgG2b, kappa
Calculated MW	110-160kDa KDa

**CD50 / ICAM-3 Antibody - With BSA and Azide - Additional Information****Gene ID** 3385**Other Names**

Intercellular adhesion molecule 3, ICAM-3, CDw50, ICAM-R, CD50, ICAM3

**Storage**

Store at 2 to 8°C. Antibody is stable for 24 months.

**Precautions**

CD50 / ICAM-3 Antibody - With BSA and Azide is for research use only and not for use in diagnostic or therapeutic procedures.

**CD50 / ICAM-3 Antibody - With BSA and Azide - Protein Information****Name** ICAM3**Function**

ICAM proteins are ligands for the leukocyte adhesion protein LFA-1 (integrin alpha-L/beta-2) (PubMed:<a href="http://www.uniprot.org/citations/1448173" target="\_blank">1448173</a>).

ICAM3 is also a ligand for integrin alpha-D/beta-2. In association with integrin alpha- L/beta-2, contributes to apoptotic neutrophil phagocytosis by macrophages (PubMed:<a href="http://www.uniprot.org/citations/23775590" target="\_blank">23775590</a>).

**Cellular Location**

Membrane; Single-pass type I membrane protein.

**Tissue Location**

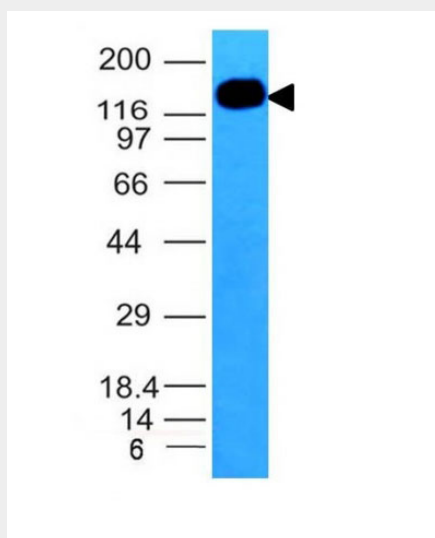
Leukocytes.

## CD50 / ICAM-3 Antibody - With BSA and Azide - Protocols

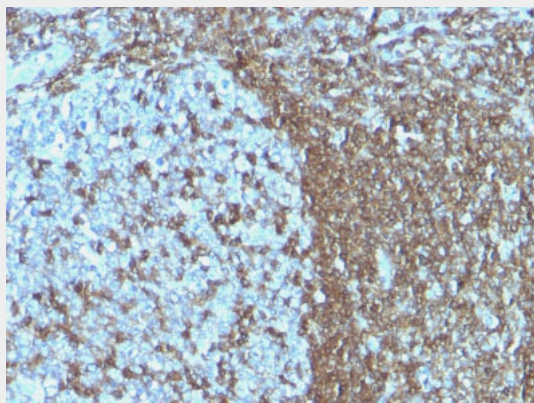
Provided below are standard protocols that you may find useful for product applications.

- [Western Blot](#)
- [Blocking Peptides](#)
- [Dot Blot](#)
- [Immunohistochemistry](#)
- [Immunofluorescence](#)
- [Immunoprecipitation](#)
- [Flow Cytometry](#)
- [Cell Culture](#)

## CD50 / ICAM-3 Antibody - With BSA and Azide - Images



Western Blot Analysis of HL-60 Cell Lysate using CD50 Monoclonal Antibody (ICAM3/1019)



Formalin-fixed, paraffin-embedded human Tonsil stained with CD50 Monoclonal Antibody (ICAM3/1019)

## CD50 / ICAM-3 Antibody - With BSA and Azide - Background

Recognizes an N-glycosylated glycoprotein of 120kDa with intra-chain disulfide bonds, identified as CD50 or ICAM-3. CD50 is the major ligand for LFA-1 (CD11a/CD18) and may have signaling role to increase adhesion. It is expressed on thymocytes and T lymphocytes and is resistant to treatment with phosphatidylinositol (PI) phospholipase C. This MAb is excellent for staining of formalin/paraffin

tissues.

#### **CD50 / ICAM-3 Antibody - With BSA and Azide - References**

Fawcett, J., Holness, C.L., Needham, L.A., Turley, H., Gatter, K.C., Mason, D.Y. and Simmons, D.L. 1992. Molecular cloning of ICAM-3, a third ligand for LFA-1, constitutively expressed on resting leukocytes. Nature 360:481-484