

Ep-CAM / CD326 (Epithelial Marker) Antibody
Mouse Monoclonal Antibody [Clone SPM134]
Catalog # AH11764**Specification**

Ep-CAM / CD326 (Epithelial Marker) Antibody - Product Information

Application	IF, FC
Primary Accession	P16422
Other Accession	4072 , 542050
Reactivity	Human
Host	Mouse
Clonality	Monoclonal
Isotype	Mouse / IgG1, kappa
Calculated MW	40-43kDa KDa

Ep-CAM / CD326 (Epithelial Marker) Antibody - Additional Information**Gene ID** 4072**Other Names**

Epithelial cell adhesion molecule, Ep-CAM, Adenocarcinoma-associated antigen, Cell surface glycoprotein Trop-1, Epithelial cell surface antigen, Epithelial glycoprotein, EGP, Epithelial glycoprotein 314, EGP314, hEGP314, KS 1/4 antigen, KSA, Major gastrointestinal tumor-associated protein GA733-2, Tumor-associated calcium signal transducer 1, CD326, EPCAM, GA733-2, M1S2, M4S1, MIC18, TACSTD1, TROP1

Application Note

IF~~1:50~200
FC~~1:10~50

Storage

Store at 2 to 8°C. Antibody is stable for 24 months.

Precautions

Ep-CAM / CD326 (Epithelial Marker) Antibody is for research use only and not for use in diagnostic or therapeutic procedures.

Ep-CAM / CD326 (Epithelial Marker) Antibody - Protein Information**Name** EPCAM**Synonyms** GA733-2, M1S2, M4S1, MIC18, TACSTD1, TRO**Function**

May act as a physical homophilic interaction molecule between intestinal epithelial cells (IECs) and intraepithelial lymphocytes (IELs) at the mucosal epithelium for providing immunological barrier as a first line of defense against mucosal infection. Plays a role in embryonic stem cells proliferation and differentiation. Up-regulates the expression of FABP5, MYC and cyclins A and E.

Cellular Location

Lateral cell membrane; Single-pass type I membrane protein. Cell junction, tight junction.

Note=Colocalizes with CLDN7 at the lateral cell membrane and tight junction

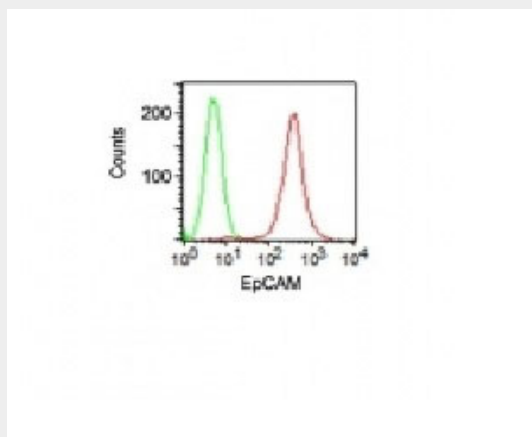
Tissue Location

Highly and selectively expressed by undifferentiated rather than differentiated embryonic stem cells (ESC) Levels rapidly diminish as soon as ESC's differentiate (at protein levels). Expressed in almost all epithelial cell membranes but not on mesodermal or neural cell membranes. Found on the surface of adenocarcinoma.

Ep-CAM / CD326 (Epithelial Marker) Antibody - Protocols

Provided below are standard protocols that you may find useful for product applications.

- [Western Blot](#)
- [Blocking Peptides](#)
- [Dot Blot](#)
- [Immunohistochemistry](#)
- [Immunofluorescence](#)
- [Immunoprecipitation](#)
- [Flow Cytometry](#)
- [Cell Culture](#)

Ep-CAM / CD326 (Epithelial Marker) Antibody - Images

Flow Cytometry of HT29 Cells. Black: Cells alone; Green: Isotype Control; Red: PE-labeled Ep-CAM Monoclonal Antibody (SPM134).

Ep-CAM / CD326 (Epithelial Marker) Antibody - Background

EGP40 is a 40-43kDa transmembrane epithelial glycoprotein, also identified as epithelial specific antigen (ESA), or epithelial cellular adhesion molecule (Ep-CAM). It is expressed on baso-lateral cell surface in most simple epithelia and a vast majority of carcinomas. This antibody has been used to distinguish adenocarcinoma from pleural mesothelioma and hepatocellular carcinoma. This antibody is also useful in distinguishing serous carcinomas of the ovary from mesothelioma.

Ep-CAM / CD326 (Epithelial Marker) Antibody - References

Litvinov SV et. al. J Cell Biol, 1994, 125:437-46. | Tsubura A et. al. J Cut Pathol, 1992, 19:73-9