

MUC18 / CD146 / MCAM (Melanoma Cell Adhesion Molecule) Antibody - With BSA and Azide

Mouse Monoclonal Antibody [Clone C146/634]
Catalog # AH11792

Specification**MUC18 / CD146 / MCAM (Melanoma Cell Adhesion Molecule) Antibody - With BSA and Azide - Product Information**

| | |
|-------------------|---|
| Application | IHC, IF, FC |
| Primary Accession | P43121 |
| Other Accession | 4162 , 599039 |
| Reactivity | Human |
| Host | Mouse |
| Clonality | Monoclonal |
| Isotype | Mouse / IgG1, kappa |
| Calculated MW | 130kDa KDa |

MUC18 / CD146 / MCAM (Melanoma Cell Adhesion Molecule) Antibody - With BSA and Azide - Additional Information

Gene ID 4162

Other Names

Cell surface glycoprotein MUC18, Cell surface glycoprotein P1H12, Melanoma cell adhesion molecule, Melanoma-associated antigen A32, Melanoma-associated antigen MUC18, S-endo 1 endothelial-associated antigen, CD146, MCAM, MUC18

Application Note

IHC~~1:100~500
IF~~1:50~200
FC~~1:10~50

Storage

Store at 2 to 8°C. Antibody is stable for 24 months.

Precautions

MUC18 / CD146 / MCAM (Melanoma Cell Adhesion Molecule) Antibody - With BSA and Azide is for research use only and not for use in diagnostic or therapeutic procedures.

MUC18 / CD146 / MCAM (Melanoma Cell Adhesion Molecule) Antibody - With BSA and Azide - Protein Information

Name MCAM

Synonyms MUC18

Function

Plays a role in cell adhesion, and in cohesion of the endothelial monolayer at intercellular junctions in vascular tissue. Its expression may allow melanoma cells to interact with cellular elements of

the vascular system, thereby enhancing hematogeneous tumor spread. Could be an adhesion molecule active in neural crest cells during embryonic development. Acts as a surface receptor that triggers tyrosine phosphorylation of FYN and PTK2/FAK1, and a transient increase in the intracellular calcium concentration.

Cellular Location

Membrane; Single-pass type I membrane protein.

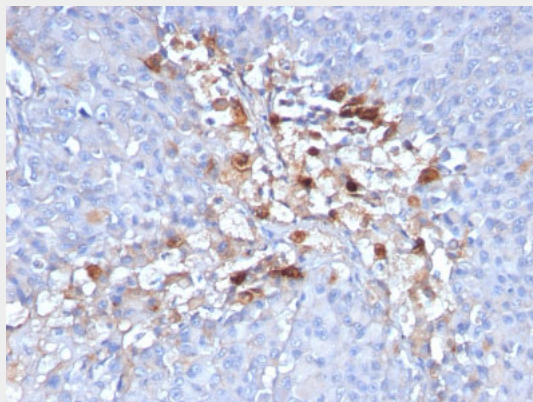
Tissue Location

Detected in endothelial cells in vascular tissue throughout the body. May appear at the surface of neural crest cells during their embryonic migration. Appears to be limited to vascular smooth muscle in normal adult tissues. Associated with tumor progression and the development of metastasis in human malignant melanoma. Expressed most strongly on metastatic lesions and advanced primary tumors and is only rarely detected in benign melanocytic nevi and thin primary melanomas with a low probability of metastasis

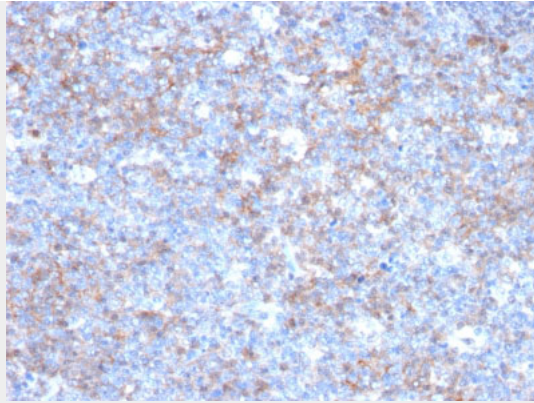
MUC18 / CD146 / MCAM (Melanoma Cell Adhesion Molecule) Antibody - With BSA and Azide - Protocols

Provided below are standard protocols that you may find useful for product applications.

- [Western Blot](#)
- [Blocking Peptides](#)
- [Dot Blot](#)
- [Immunohistochemistry](#)
- [Immunofluorescence](#)
- [Immunoprecipitation](#)
- [Flow Cytometry](#)
- [Cell Culture](#)

MUC18 / CD146 / MCAM (Melanoma Cell Adhesion Molecule) Antibody - With BSA and Azide - Images

Formalin-fixed, paraffin-embedded human Melanoma stained with CD146 Monoclonal Antibody (C146/634)



Formalin-fixed, paraffin-embedded human Tonsil stained with CD146 Monoclonal Antibody (C146/634)

MUC18 / CD146 / MCAM (Melanoma Cell Adhesion Molecule) Antibody - With BSA and Azide - Background

The human CD146 gene maps to chromosome 11q23 and encodes a trans-membrane glycoprotein, also designated MCAM, MUC 18, that belongs to the immunoglobulin superfamily and functions as a Ca^{2+} -independent cell adhesion molecule. CD146 expression is restricted to advanced primary and metastatic melanomas and to cell lines of the neuroectodermal lineage, but not normal melanocytes. CD146 is found on 80% of advanced primary human melanomas and correlates well with development of metastatic disease.

MUC18 / CD146 / MCAM (Melanoma Cell Adhesion Molecule) Antibody - With BSA and Azide - References

Pruszek J et al. Stem Cells 25:2257-68 (2007)