

Microphthalmia Transcription Factor (MITF) Antibody - With BSA and Azide
Mouse Monoclonal Antibody [Clone SPM290]
Catalog # AH11834

Specification

Microphthalmia Transcription Factor (MITF) Antibody - With BSA and Azide - Product Information

Application	IHC, IF, FC
Primary Accession	075030
Other Accession	4286 , 166017 , 618266
Reactivity	Human
Host	Mouse
Clonality	Monoclonal
Isotype	Mouse / IgG1, kappa
Calculated MW	52-56kDa (doublet) KDa

Microphthalmia Transcription Factor (MITF) Antibody - With BSA and Azide - Additional Information

Gene ID 4286

Other Names

Microphthalmia-associated transcription factor, Class E basic helix-loop-helix protein 32, bHLHe32, MITF, BHLHE32

Application Note

IHC~~1:100~500
IF~~1:50~200
FC~~1:10~50

Storage

Store at 2 to 8°C. Antibody is stable for 24 months.

Precautions

Microphthalmia Transcription Factor (MITF) Antibody - With BSA and Azide is for research use only and not for use in diagnostic or therapeutic procedures.

Microphthalmia Transcription Factor (MITF) Antibody - With BSA and Azide - Protein Information

Name MITF {ECO:0000303|PubMed:8069297, ECO:0000312|HGNC:HGNC:7105}

Function

Transcription factor that acts as a master regulator of melanocyte survival and differentiation as well as melanosome biogenesis (PubMed: [10587587](http://www.uniprot.org/citations/10587587), PubMed: [22647378](http://www.uniprot.org/citations/22647378), PubMed: [27889061](http://www.uniprot.org/citations/27889061), PubMed: [9647758](http://www.uniprot.org/citations/9647758)). Binds to M-boxes (5'-TCATGTG-3') and symmetrical DNA

sequences (E-boxes) (5'-CACGTG-3') found in the promoter of pigmentation genes, such as tyrosinase (TYR) (PubMed:[10587587](http://www.uniprot.org/citations/10587587)), PubMed:[22647378](http://www.uniprot.org/citations/22647378), PubMed:[27889061](http://www.uniprot.org/citations/27889061), PubMed:[9647758](http://www.uniprot.org/citations/9647758)). Involved in the cellular response to amino acid availability by acting downstream of MTOR: in the presence of nutrients, MITF phosphorylation by MTOR promotes its inactivation (PubMed:[36608670](http://www.uniprot.org/citations/36608670)). Upon starvation or lysosomal stress, inhibition of MTOR induces MITF dephosphorylation, resulting in transcription factor activity (PubMed:[36608670](http://www.uniprot.org/citations/36608670)). Plays an important role in melanocyte development by regulating the expression of tyrosinase (TYR) and tyrosinase-related protein 1 (TYRP1) (PubMed:[10587587](http://www.uniprot.org/citations/10587587), PubMed:[22647378](http://www.uniprot.org/citations/22647378), PubMed:[27889061](http://www.uniprot.org/citations/27889061), PubMed:[9647758](http://www.uniprot.org/citations/9647758)). Plays a critical role in the differentiation of various cell types, such as neural crest-derived melanocytes, mast cells, osteoclasts and optic cup-derived retinal pigment epithelium (PubMed:[10587587](http://www.uniprot.org/citations/10587587), PubMed:[22647378](http://www.uniprot.org/citations/22647378), PubMed:[27889061](http://www.uniprot.org/citations/27889061), PubMed:[9647758](http://www.uniprot.org/citations/9647758)).

Cellular Location

Nucleus. Cytoplasm. Lysosome membrane Note=When nutrients are present, recruited to the lysosomal membrane via association with GDP-bound RagC/RRAGC (or RagD/RRAGD): it is then phosphorylated by MTOR (PubMed:23401004, PubMed:36608670) Phosphorylation by MTOR promotes ubiquitination and degradation (PubMed:36608670). Conversely, inhibition of mTORC1, starvation and lysosomal disruption, promotes dephosphorylation and translocation to the nucleus (PubMed:36608670). Phosphorylation by MARK3/cTAK1 promotes association with 14-3-3/YWHA adapters and retention in the cytosol (PubMed:16822840).

Tissue Location

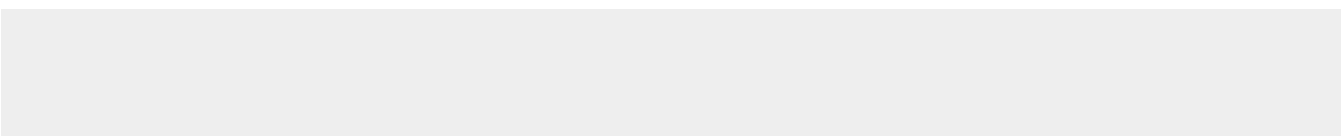
Expressed in melanocytes (at protein level). [Isoform C2]: Expressed in the kidney and retinal pigment epithelium. [Isoform H2]: Expressed in the kidney. [Isoform Mdel]: Expressed in melanocytes.

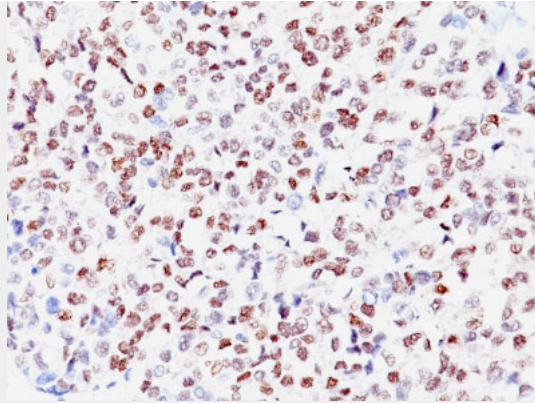
Microphthalmia Transcription Factor (MITF) Antibody - With BSA and Azide - Protocols

Provided below are standard protocols that you may find useful for product applications.

- [Western Blot](#)
- [Blocking Peptides](#)
- [Dot Blot](#)
- [Immunohistochemistry](#)
- [Immunofluorescence](#)
- [Immunoprecipitation](#)
- [Flow Cytometry](#)
- [Cell Culture](#)

Microphthalmia Transcription Factor (MITF) Antibody - With BSA and Azide - Images





Formalin-fixed, paraffin-embedded human Melanoma stained with MITF Monoclonal Antibody (SPM290).

Microphthalmia Transcription Factor (MITF) Antibody - With BSA and Azide - Background

MITF (microphthalmia transcription factor) is a basic helix-loop-helix-leucine-zipper (bHLH-Zip) transcription factor that regulates the development and survival of melanocytes and retinal pigment epithelium, and also is involved in transcription of pigmentation enzyme genes such as tyrosinase TRP1 and TRP2. MITF has been shown to be phosphorylated by MAP kinase in response to c-kit activation, resulting in upregulation of MITF transcriptional activity. Mutations of the MITF gene are associated with the autosomal dominant hereditary deafness and pigmentation condition, Waardenburg Syndrome type 2A. Multiple isoforms of MITF exist, including MITF-A, MITF-B, MITF-C, MITF-H, and MITF-M, which differ in the amino-terminal domain and in their expression patterns. The MITF-M isoform is restricted to the melanocyte cell lineage. Anti-MITF, D5, recognizes a nuclear protein, which is expressed in the majority of primary and metastatic epithelioid malignant melanomas as well as in normal melanocytes, benign nevi and dysplastic nevi.

Microphthalmia Transcription Factor (MITF) Antibody - With BSA and Azide - References

Hemesath P, et. al. MAP kinase links the transcription factor microphthalmia to c-Kit signalling in melanocytes. *Nature*. 1998, 391:298-301 | Weilbaecher KN, et. al. Age-resolving osteopetrosis: a rat model implicating microphthalmia and the related transcription factor TFE3. *J. Exp.Med.* 1998, 187: 775-785 |