

MUC1 / EMA / CD227 (Epithelial Marker) Antibody - With BSA and Azide
Mouse Monoclonal Antibody [Clone MUC1/520]
Catalog # AH11866

Specification

MUC1 / EMA / CD227 (Epithelial Marker) Antibody - With BSA and Azide - Product Information

Application	IHC, IF, FC
Primary Accession	P15941
Other Accession	4582 , 89603
Reactivity	Human
Host	Mouse
Clonality	Monoclonal
Isotype	Mouse / IgG2a, kappa
Calculated MW	265-400kDa KDa

MUC1 / EMA / CD227 (Epithelial Marker) Antibody - With BSA and Azide - Additional Information

Gene ID 4582

Other Names

Mucin-1, MUC-1, Breast carcinoma-associated antigen DF3, Cancer antigen 15-3, CA 15-3, Carcinoma-associated mucin, Episialin, H23AG, Krebs von den Lungen-6, KL-6, PEMT, Peanut-reactive urinary mucin, PUM, Polymorphic epithelial mucin, PEM, Tumor-associated epithelial membrane antigen, EMA, Tumor-associated mucin, CD227, Mucin-1 subunit alpha, MUC1-NT, MUC1-alpha, Mucin-1 subunit beta, MUC1-beta, MUC1-CT, MUC1, PUM

Application Note

IHC~~1:100~500
IF~~1:50~200
FC~~1:10~50

Storage

Store at 2 to 8°C. Antibody is stable for 24 months.

Precautions

MUC1 / EMA / CD227 (Epithelial Marker) Antibody - With BSA and Azide is for research use only and not for use in diagnostic or therapeutic procedures.

MUC1 / EMA / CD227 (Epithelial Marker) Antibody - With BSA and Azide - Protein Information

Name MUC1

Synonyms PUM

Function

The alpha subunit has cell adhesive properties. Can act both as an adhesion and an anti-adhesion

protein. May provide a protective layer on epithelial cells against bacterial and enzyme attack.

Cellular Location

Apical cell membrane; Single-pass type I membrane protein. Note=Exclusively located in the apical domain of the plasma membrane of highly polarized epithelial cells After endocytosis, internalized and recycled to the cell membrane Located to microvilli and to the tips of long filopodial protusions [Isoform Y]: Secreted. [Mucin-1 subunit beta]: Cell membrane. Cytoplasm. Nucleus. Note=On EGF and PDGFRB stimulation, transported to the nucleus through interaction with CTNNB1, a process which is stimulated by phosphorylation. On HRG stimulation, colocalizes with JUP/gamma-catenin at the nucleus

Tissue Location

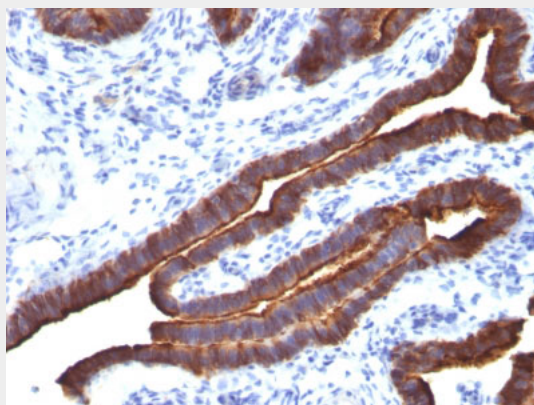
Expressed on the apical surface of epithelial cells, especially of airway passages, breast and uterus. Also expressed in activated and unactivated T-cells. Overexpressed in epithelial tumors, such as breast or ovarian cancer and also in non-epithelial tumor cells. Isoform Y is expressed in tumor cells only

MUC1 / EMA / CD227 (Epithelial Marker) Antibody - With BSA and Azide - Protocols

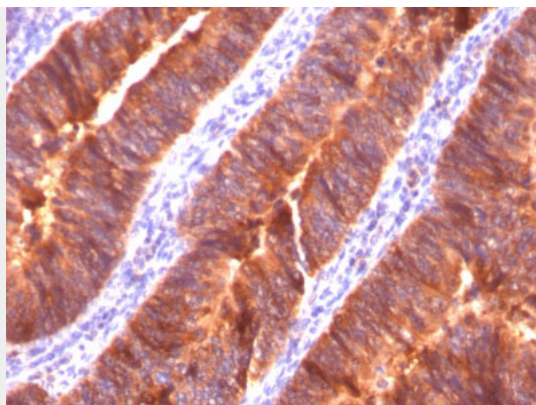
Provided below are standard protocols that you may find useful for product applications.

- [Western Blot](#)
- [Blocking Peptides](#)
- [Dot Blot](#)
- [Immunohistochemistry](#)
- [Immunofluorescence](#)
- [Immunoprecipitation](#)
- [Flow Cytometry](#)
- [Cell Culture](#)

MUC1 / EMA / CD227 (Epithelial Marker) Antibody - With BSA and Azide - Images



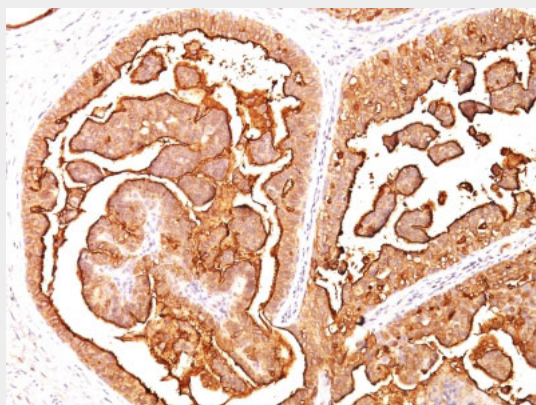
Formalin-fixed, paraffin-embedded human Ovarian Carcinoma stained with MUC-1 / EMA Monoclonal Antibody (MUC1/520).



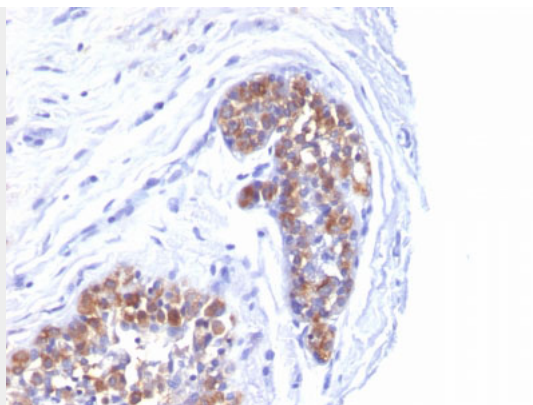
Formalin-fixed, paraffin-embedded human Colon Carcinoma stained with MUC-1 / EMA Monoclonal Antibody (MUC1/520).



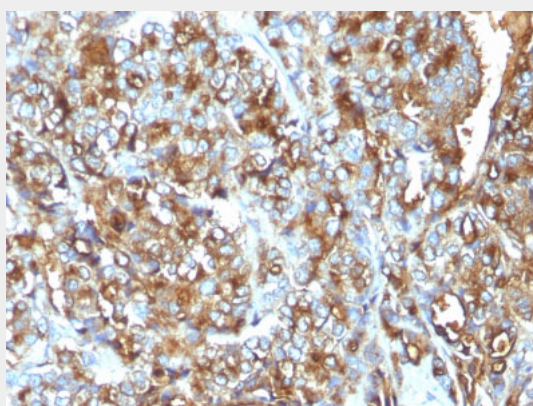
Formalin-fixed, paraffin-embedded human Endometrial Carcinoma stained with MUC-1 / EMA Monoclonal Antibody (MUC1/520).



Formalin-fixed, paraffin-embedded human Breast Carcinoma stained with MUC-1 / EMA Monoclonal Antibody (MUC1/520).



Formalin-fixed, paraffin-embedded human Breast Carcinoma stained with MUC-1 / EMA Monoclonal Antibody (MUC1/520).



Formalin-fixed, paraffin-embedded human Breast Carcinoma stained with MUC-1 / EMA Monoclonal Antibody (MUC1/520).

MUC1 / EMA / CD227 (Epithelial Marker) Antibody - With BSA and Azide - Background

In Western blotting, it recognizes proteins in MW range of 265-400kDa, identified as different glycoforms of EMA. EMA may provide a protective layer on epithelial cells against bacterial and enzyme attack. In immunohistochemical assays, it superbly stains routine formalin/paraffin carcinomas. Antibody to EMA is useful as a pan-epithelial marker for detecting early metastatic loci of carcinoma in bone marrow or liver.

MUC1 / EMA / CD227 (Epithelial Marker) Antibody - With BSA and Azide - References

Stanley CM, Phillips TE. Am J Physiol. 1999;277:G191-200