

MUC6 (Mucin 6 / Gastric Mucin) Antibody - With BSA and Azide
Mouse Monoclonal Antibody [Clone CLH5]
Catalog # AH11923

Specification

MUC6 (Mucin 6 / Gastric Mucin) Antibody - With BSA and Azide - Product Information

Application	IHC, IF, FC
Primary Accession	O6W4X9
Other Accession	4588 , 528432
Reactivity	Human
Host	Mouse
Clonality	Monoclonal
Isotype	Mouse / IgG1, kappa
Calculated MW	252kDa KDa

MUC6 (Mucin 6 / Gastric Mucin) Antibody - With BSA and Azide - Additional Information

Gene ID 4588

Other Names

Mucin-6, MUC-6, Gastric mucin-6, MUC6

Application Note

IHC~~1:100~500
IF~~1:50~200
FC~~1:10~50

Storage

Store at 2 to 8°C. Antibody is stable for 24 months.

Precautions

MUC6 (Mucin 6 / Gastric Mucin) Antibody - With BSA and Azide is for research use only and not for use in diagnostic or therapeutic procedures.

MUC6 (Mucin 6 / Gastric Mucin) Antibody - With BSA and Azide - Protein Information

Name MUC6

Function

May provide a mechanism for modulation of the composition of the protective mucus layer related to acid secretion or the presence of bacteria and noxious agents in the lumen. Plays an important role in the cytoprotection of epithelial surfaces and are used as tumor markers in a variety of cancers. May play a role in epithelial organogenesis.

Cellular Location

Secreted.

Tissue Location

Expressed in the regenerative zone of gastric antrum, gastric body mucosa and gastric incisura

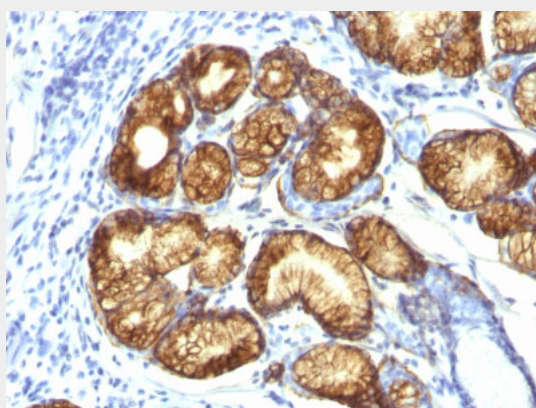
mucosa. Expressed in the deeper mucous glands of gastric antrum. Overexpressed in *Helicobacter pylori* infected gastric epithelium. Highly expressed in duodenal Brunner's glands, gall bladder, seminal vesicle, pancreatic centroacinar cells and ducts, and periductal glands of the common bile duct.

MUC6 (Mucin 6 / Gastric Mucin) Antibody - With BSA and Azide - Protocols

Provided below are standard protocols that you may find useful for product applications.

- [Western Blot](#)
- [Blocking Peptides](#)
- [Dot Blot](#)
- [Immunohistochemistry](#)
- [Immunofluorescence](#)
- [Immunoprecipitation](#)
- [Flow Cytometry](#)
- [Cell Culture](#)

MUC6 (Mucin 6 / Gastric Mucin) Antibody - With BSA and Azide - Images



Formalin-fixed, paraffin-embedded human Gastric Carcinoma stained with MUC6 Monoclonal Antibody (CLH5).

MUC6 (Mucin 6 / Gastric Mucin) Antibody - With BSA and Azide - Background

The MUC6 gastric mucin is a secreted glycoprotein that plays an essential role in epithelial cyto-protection from acid, proteases, pathogenic microorganisms, and mechanical trauma in the gastrointestinal tract. Mucin 6 expression is highest in the stomach and gall bladder, with lower expression in the terminal ileum and right colon. In gastric cancer, Mucin 6 has an altered expression. In normal stomach, Mucin 6 is associated with Lewis type 2; Mucin 6 is also expressed in gastric metaplasia, duodenum and pancreas. Mucin 6 is a secretory mucin, located in the deeper mucosal folds of human gall bladder, and its expression is altered with increasing degrees of inflammation.

MUC6 (Mucin 6 / Gastric Mucin) Antibody - With BSA and Azide - References

Reis C A, David L, Correa P, et al. Intestinal metaplasia of human stomach displays distinct patterns of mucin (MUC1, MUC2, MUC5AC, and MUC6) expression. *Cancer Res.* 59(5): 1003-1007 (1999)