

CD56 / NCAM1 / NKH1 (Neuronal Cell Marker) Antibody - With BSA and Azide
Mouse Monoclonal Antibody [Clone NCAM1/795]
Catalog # AH11975**Specification****CD56 / NCAM1 / NKH1 (Neuronal Cell Marker) Antibody - With BSA and Azide - Product Information**

Application	WB, IHC, IF, FC
Primary Accession	P13591
Other Accession	4684 , 503878 , P13592
Reactivity	Human
Host	Mouse
Clonality	Monoclonal
Isotype	Mouse / IgG1, kappa
Calculated MW	180, 145 and 125kDa KDa

CD56 / NCAM1 / NKH1 (Neuronal Cell Marker) Antibody - With BSA and Azide - Additional Information**Gene ID** 4684**Other Names**

Neural cell adhesion molecule 1, N-CAM-1, NCAM-1, CD56, NCAM1, NCAM

Application Note

WB~~1:1000
IHC~~1:100~500
IF~~1:50~200
FC~~1:10~50

Storage

Store at 2 to 8°C. Antibody is stable for 24 months.

Precautions

CD56 / NCAM1 / NKH1 (Neuronal Cell Marker) Antibody - With BSA and Azide is for research use only and not for use in diagnostic or therapeutic procedures.

CD56 / NCAM1 / NKH1 (Neuronal Cell Marker) Antibody - With BSA and Azide - Protein Information**Name** NCAM1 ([HGNC:7656](#))**Synonyms** NCAM**Function**

This protein is a cell adhesion molecule involved in neuron- neuron adhesion, neurite fasciculation, outgrowth of neurites, etc. (Microbial infection) Acts as a receptor for Zika virus.

Cellular Location

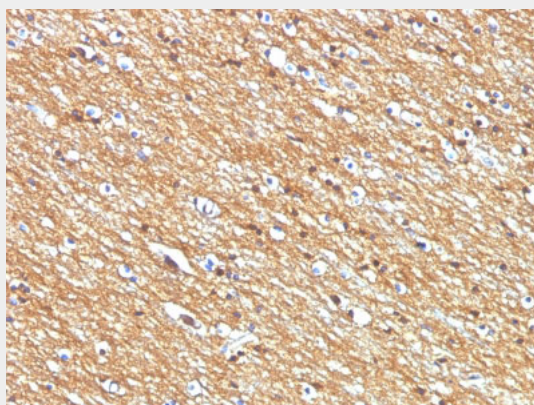
[Isoform 1]: Cell membrane; Single-pass type I membrane protein [Isoform 3]: Cell membrane; Lipid-anchor, GPI- anchor [Isoform 5]: Secreted.

CD56 / NCAM1 / NKH1 (Neuronal Cell Marker) Antibody - With BSA and Azide - Protocols

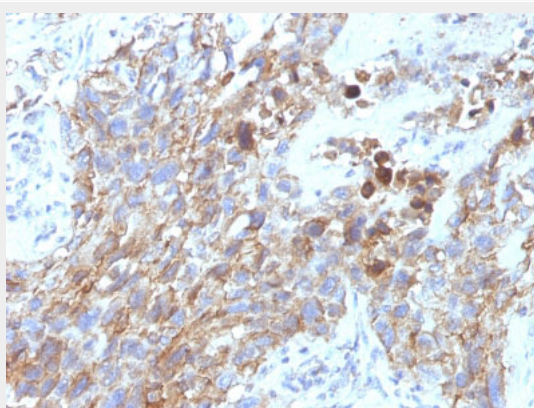
Provided below are standard protocols that you may find useful for product applications.

- [Western Blot](#)
- [Blocking Peptides](#)
- [Dot Blot](#)
- [Immunohistochemistry](#)
- [Immunofluorescence](#)
- [Immunoprecipitation](#)
- [Flow Cytometry](#)
- [Cell Culture](#)

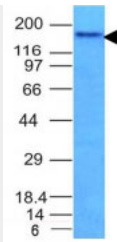
CD56 / NCAM1 / NKH1 (Neuronal Cell Marker) Antibody - With BSA and Azide - Images



Formalin-fixed, paraffin-embedded human Brain Tumor stained with CD56 Monoclonal Antibody (NCAM1/795)



Formalin-fixed, paraffin-embedded human Lung Carcinoma stained with CD56 Monoclonal Antibody (NCAM1/795)



Western Blot Analysis of HCT116 Cell Lysate using CD56 Monoclonal Antibody (NCAM1/795)

CD56 / NCAM1 / NKH1 (Neuronal Cell Marker) Antibody - With BSA and Azide - Background

This MAb reacts with an extracellular domain (close to transmembrane) of CD56/NCAM. Three isoforms of neural cell adhesion molecule (NCAM) are produced by differential splicing of the RNA transcript from a single gene. The 135kDa isoform is the basic molecule, which is glycosylated or sialylated to produce the mature species. Anti-CD56 recognizes two proteins of the neural cell adhesion molecule, the basic molecule expressed on most neuroectodermally derived tissues and neoplasms (e.g. retinoblastoma, medulloblastomas, astrocytomas, neuroblastomas, and small cell carcinomas). It is also expressed on some mesodermally derived tumors (rhabdomyosarcoma). Anti-CD56 plays an important role in the diagnosis of nodal and nasal NK/T-cell lymphomas.

CD56 / NCAM1 / NKH1 (Neuronal Cell Marker) Antibody - With BSA and Azide - References

Endo, C., et al. 2009. Immunocytochemical evaluation of large cell neuroendocrine carcinoma of the lung. Acta Cytol. 53: 36-40