

**Neurofilament (NF-L) (Neuronal Marker) Antibody - With BSA and Azide**  
**Mouse Monoclonal Antibody [Clone SPM204 ]**  
**Catalog # AH12000****Specification****Neurofilament (NF-L) (Neuronal Marker) Antibody - With BSA and Azide - Product Information**

Application	IHC, IF, FC
Primary Accession	<a href="#">P07196</a>
Other Accession	<a href="#">4747</a> , <a href="#">521461</a>
Reactivity	Human, Rat, Pig, Chicken, Bovine
Host	Mouse
Clonality	Monoclonal
Isotype	Mouse / IgG1
Calculated MW	68kDa KDa

**Neurofilament (NF-L) (Neuronal Marker) Antibody - With BSA and Azide - Additional Information****Gene ID** 4747**Other Names**

Neurofilament light polypeptide, NF-L, 68 kDa neurofilament protein, Neurofilament triplet L protein, NEFL, NF68, NFL

**Application Note**

&lt;span class = "dilution\_IHC"&gt;IHC~~1:100~500&lt;/span&gt;&lt;br \&gt;&lt;span class = "dilution\_IF"&gt;IF~~1:50~200&lt;/span&gt;&lt;br \&gt;&lt;span class = "dilution\_FC"&gt;FC~~1:10~50&lt;/span&gt;

**Storage**

Store at 2 to 8°C. Antibody is stable for 24 months.

**Precautions**

Neurofilament (NF-L) (Neuronal Marker) Antibody - With BSA and Azide is for research use only and not for use in diagnostic or therapeutic procedures.

**Neurofilament (NF-L) (Neuronal Marker) Antibody - With BSA and Azide - Protein Information****Name** NEFL**Synonyms** NF68, NFL**Function**

Neurofilaments usually contain three intermediate filament proteins: NEFL, NEFM, and NEFH which are involved in the maintenance of neuronal caliber. May additionally cooperate with the neuronal intermediate filament proteins PRPH and INA to form neuronal filamentous networks (By similarity).

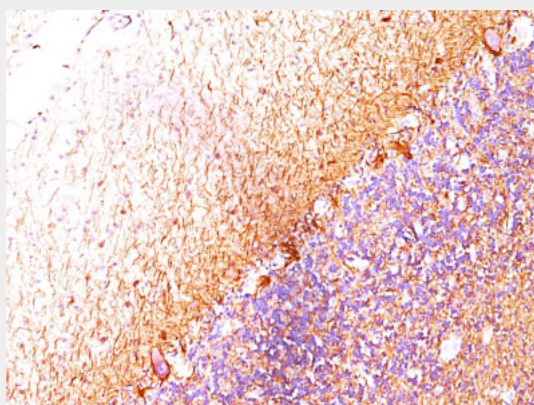
**Cellular Location**

Cell projection, axon {ECO:0000250|UniProtKB:P08551}. Cytoplasm, cytoskeleton {ECO:0000250|UniProtKB:P08551}

**Neurofilament (NF-L) (Neuronal Marker) Antibody - With BSA and Azide - Protocols**

Provided below are standard protocols that you may find useful for product applications.

- [Western Blot](#)
- [Blocking Peptides](#)
- [Dot Blot](#)
- [Immunohistochemistry](#)
- [Immunofluorescence](#)
- [Immunoprecipitation](#)
- [Flow Cytometry](#)
- [Cell Culture](#)

**Neurofilament (NF-L) (Neuronal Marker) Antibody - With BSA and Azide - Images**

Formalin-fixed, paraffin-embedded Cerebellum stained with Neurofilament Monoclonal Antibody (SPM204).

**Neurofilament (NF-L) (Neuronal Marker) Antibody - With BSA and Azide - Background**

This MAb reacts with a 68kDa protein, identified as light sub-unit of neurofilaments (NF-L). Neurofilaments make up the main structural elements of axons and dendrites and are found in neurons, peripheral nerves, and sympathetic ganglion cells. Neurofilaments consist of three major subunits with molecular weights of 68kDa (NF-L), 160kDa (NF-M) and 200kDa (NF-H). Anti-neurofilament stains a number of neural, neuroendocrine, and endocrine tumors. Neuromas, ganglioneuromas, gangliogliomas, ganglioneuroblastomas, and neuroblastomas stain positively for anti-neurofilament. Neurofilaments are also present in paragangliomas as well as adrenal and extra-adrenal pheochromocytomas. Carcinoids, neuroendocrine carcinomas of the skin, and oat cell carcinomas of the lung also express neurofilament.

**Neurofilament (NF-L) (Neuronal Marker) Antibody - With BSA and Azide - References**

Debus E., Weber K., Osborn M. Monoclonal antibodies specific for glial fibrillary acidic (GFA) protein and for each of the neurofilament triplet polypeptides. *Differentiation* 25 (2): 193-203, (1983). | Angelides, K.J., et. al. 1989. *J. Cell Biol.* 108: 1495-1506. |