

Actin, Smooth Muscle (Leiomyosarcoma Marker) Antibody - With BSA and Azide
Mouse Monoclonal Antibody [Clone ACTA2/791]
Catalog # AH12223

Specification

**Actin, Smooth Muscle (Leiomyosarcoma Marker) Antibody - With BSA and Azide -
Product Information**

Application	IHC, IF, FC
Primary Accession	P62736
Other Accession	59 , 500483
Reactivity	Human, Rat
Host	Mouse
Clonality	Monoclonal
Isotype	Mouse / IgG2a, kappa
Calculated MW	42kDa KDa

**Actin, Smooth Muscle (Leiomyosarcoma Marker) Antibody - With BSA and Azide -
Additional Information**

Gene ID 59

Other Names

Actin, aortic smooth muscle, Alpha-actin-2, Cell growth-inhibiting gene 46 protein, ACTA2, ACTSA, ACTVS

Application Note

IHC~~1:100~500
IF~~1:50~200
FC~~1:10~50

Storage

Store at 2 to 8°C. Antibody is stable for 24 months.

Precautions

Actin, Smooth Muscle (Leiomyosarcoma Marker) Antibody - With BSA and Azide is for research use only and not for use in diagnostic or therapeutic procedures.

**Actin, Smooth Muscle (Leiomyosarcoma Marker) Antibody - With BSA and Azide -
Protein Information**

Name ACTA2

Synonyms ACTSA, ACTVS

Function

Actins are highly conserved proteins that are involved in various types of cell motility and are ubiquitously expressed in all eukaryotic cells.

Cellular Location

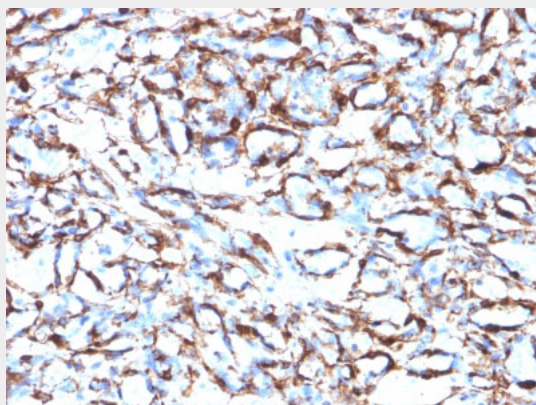
Cytoplasm, cytoskeleton.

Actin, Smooth Muscle (Leiomyosarcoma Marker) Antibody - With BSA and Azide - Protocols

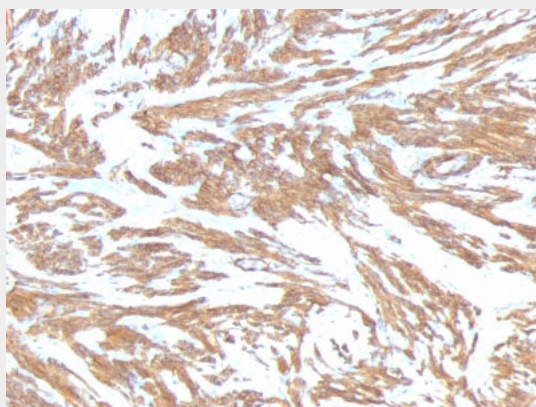
Provided below are standard protocols that you may find useful for product applications.

- [Western Blot](#)
- [Blocking Peptides](#)
- [Dot Blot](#)
- [Immunohistochemistry](#)
- [Immunofluorescence](#)
- [Immunoprecipitation](#)
- [Flow Cytometry](#)
- [Cell Culture](#)

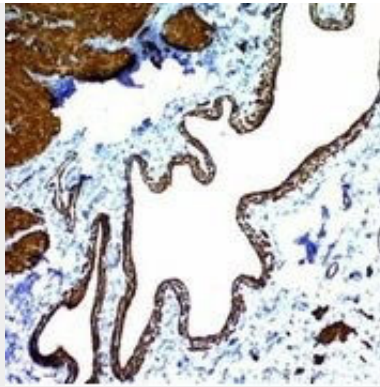
Actin, Smooth Muscle (Leiomyosarcoma Marker) Antibody - With BSA and Azide - Images



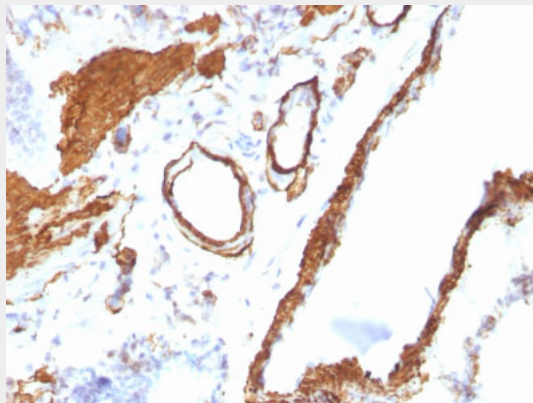
Formalin-fixed, paraffin-embedded human Angiosarcoma stained with Smooth Muscle Actin Monoclonal Antibody (ACTA2/791).



Formalin-fixed, paraffin-embedded human Leiomyosarcoma stained with Smooth Muscle Actin Monoclonal Antibody (ACTA2/791).



Formalin-fixed, paraffin-embedded human Colon Carcinoma stained with Smooth Muscle Actin Monoclonal Antibody (ACTA2/791).



Formalin-fixed, paraffin-embedded Rat Lung stained with Smooth Muscle Actin Monoclonal Antibody (ACTA2/791).

Actin, Smooth Muscle (Leiomyosarcoma Marker) Antibody - With BSA and Azide - Background

Actin is a major component of the cytoskeleton and is present in most cell types. It is highly specific to actin from smooth muscles. This MAb does not stain cardiac or skeletal muscle; however, it does stain myofibroblasts and myoepithelial cells. This antibody could be used together with anti-muscle specific actin and myogenin in making a diagnosis of smooth muscle and skeletal muscle tumors. In most cases of rhabdomyosarcoma, this antibody yields negative results whereas anti-muscle specific actin and myogenin are positive. Leiomyosarcomas are positive only with anti-muscle specific actin and anti-smooth muscle actin and are negative with anti-myogenin.

Actin, Smooth Muscle (Leiomyosarcoma Marker) Antibody - With BSA and Azide - References

Gown, A.M., et al. 1985. A smooth muscle-specific monoclonal antibody recognizes smooth muscle actin isozyms. J. Cell Biol. 100: 807-813. |