

**Actin, Smooth Muscle (Leiomyosarcoma Marker) Antibody - With BSA and Azide**  
**Mouse Monoclonal Antibody [Clone 1A4 + ACTA2/791 ]**  
**Catalog # AH12226**

**Specification**

**Actin, Smooth Muscle (Leiomyosarcoma Marker) Antibody - With BSA and Azide -  
Product Information**

Application	IHC, IF, FC
Primary Accession	<a href="#">P62736</a>
Other Accession	<a href="#">59</a> , <a href="#">500483</a>
Reactivity	Human, Rat
Host	Mouse
Clonality	Monoclonal
Isotype	Mouse / IgG's
Calculated MW	42kDa KDa

**Actin, Smooth Muscle (Leiomyosarcoma Marker) Antibody - With BSA and Azide -  
Additional Information**

**Gene ID** 59

**Other Names**

Actin, aortic smooth muscle, Alpha-actin-2, Cell growth-inhibiting gene 46 protein, ACTA2, ACTSA, ACTVS

**Application Note**

<span class = "dilution\_IHC">IHC~~1:100~500</span><br \><span class = "dilution\_IF">IF~~1:50~200</span><br \><span class = "dilution\_FC">FC~~1:10~50</span>

**Storage**

Store at 2 to 8°C. Antibody is stable for 24 months.

**Precautions**

Actin, Smooth Muscle (Leiomyosarcoma Marker) Antibody - With BSA and Azide is for research use only and not for use in diagnostic or therapeutic procedures.

**Actin, Smooth Muscle (Leiomyosarcoma Marker) Antibody - With BSA and Azide -  
Protein Information**

**Name** ACTA2

**Synonyms** ACTSA, ACTVS

**Function**

Actins are highly conserved proteins that are involved in various types of cell motility and are ubiquitously expressed in all eukaryotic cells.

**Cellular Location**

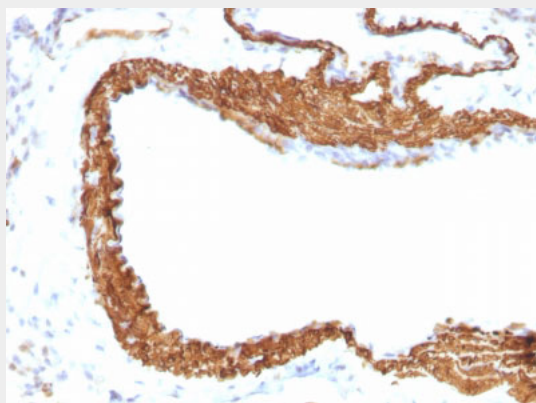
Cytoplasm, cytoskeleton.

### **Actin, Smooth Muscle (Leiomyosarcoma Marker) Antibody - With BSA and Azide - Protocols**

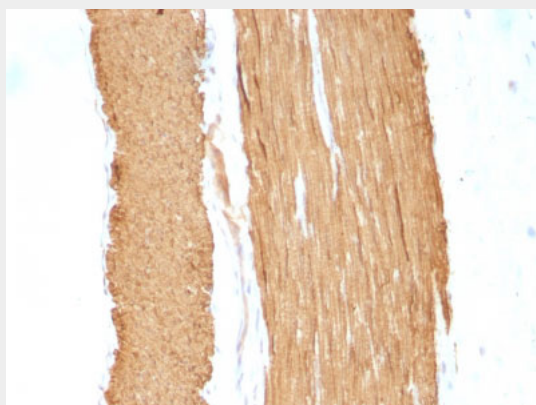
Provided below are standard protocols that you may find useful for product applications.

- [Western Blot](#)
- [Blocking Peptides](#)
- [Dot Blot](#)
- [Immunohistochemistry](#)
- [Immunofluorescence](#)
- [Immunoprecipitation](#)
- [Flow Cytometry](#)
- [Cell Culture](#)

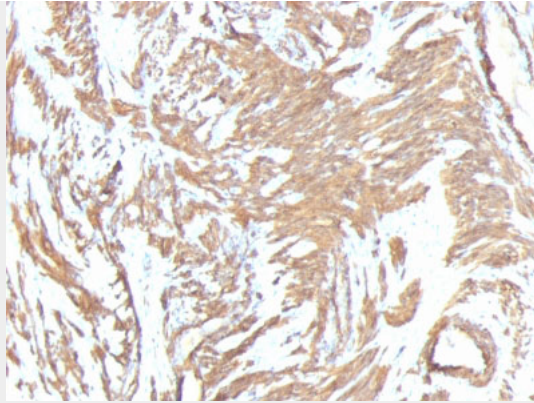
### **Actin, Smooth Muscle (Leiomyosarcoma Marker) Antibody - With BSA and Azide - Images**



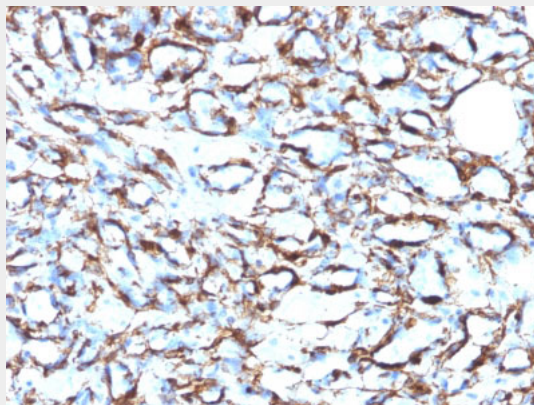
Formalin-fixed, paraffin-embedded Rat Lung stained with Smooth Muscle Actin Monoclonal Antibody (1A4 + ACTA2/791).



Formalin-fixed, paraffin-embedded Rat Stomach stained with Smooth Muscle Actin Monoclonal Antibody (1A4 + ACTA2/791).



Formalin-fixed, paraffin-embedded human Leiomyosarcoma stained with Smooth Muscle Actin Monoclonal Antibody (1A4 + ACTA2/791).



Formalin-fixed, paraffin-embedded human Angiosarcoma stained with Smooth Muscle Actin Monoclonal Antibody (1A4 + ACTA2/791).

#### **Actin, Smooth Muscle (Leiomyosarcoma Marker) Antibody - With BSA and Azide - Background**

Actin is a major component of the cytoskeleton and is present in most cell types. It is highly specific to actin from smooth muscles. This MAb does not stain cardiac or skeletal muscle; however, it does stain myofibroblasts and myoepithelial cells. This antibody could be used together with anti-muscle specific actin and myogenin in making a diagnosis of smooth muscle and skeletal muscle tumors. In most cases of rhabdomyosarcoma, this antibody yields negative results whereas anti-muscle specific actin and myogenin are positive. Leiomyosarcomas are positive only with anti-muscle specific actin and anti-smooth muscle actin and are negative with anti-myogenin.

#### **Actin, Smooth Muscle (Leiomyosarcoma Marker) Antibody - With BSA and Azide - References**

Gown, A.M., et al. 1985. A smooth muscle-specific monoclonal antibody recognizes smooth muscle actin isozymes. J. Cell Biol. 100: 807-813. |