

Retinol Binding Protein-1 (RBP1) Antibody - With BSA and Azide
Mouse Monoclonal Antibody [Clone RBP/872]
Catalog # AH12231**Specification****Retinol Binding Protein-1 (RBP1) Antibody - With BSA and Azide - Product Information**

Application	IHC, IF
Primary Accession	P02753
Other Accession	5947 , 5948 , 5950 , 529571 , P09455 , P50120
Reactivity	Human, Mouse, Rat, Rabbit, Monkey, Goat
Host	Mouse
Clonality	Monoclonal
Isotype	Mouse / IgG1, kappa
Calculated MW	21-25kDa KDa

Retinol Binding Protein-1 (RBP1) Antibody - With BSA and Azide - Additional Information**Gene ID** 5950**Other Names**

Retinol-binding protein 4, Plasma retinol-binding protein, PRBP, RBP, Plasma retinol-binding protein(1-182), Plasma retinol-binding protein(1-181), Plasma retinol-binding protein(1-179), Plasma retinol-binding protein(1-176), RBP4

Application Note

IHC~~1:100~500
IF~~1:50~200

Storage

Store at 2 to 8°C. Antibody is stable for 24 months.

Precautions

Retinol Binding Protein-1 (RBP1) Antibody - With BSA and Azide is for research use only and not for use in diagnostic or therapeutic procedures.

Retinol Binding Protein-1 (RBP1) Antibody - With BSA and Azide - Protein Information**Name** RBP4**Function**

Retinol-binding protein that mediates retinol transport in blood plasma (PubMed: [5541771](http://www.uniprot.org/citations/5541771)). Delivers retinol from the liver stores to the peripheral tissues (Probable). Transfers the bound all-trans retinol to STRA6, that then facilitates retinol transport across the cell membrane (PubMed: [22665496](http://www.uniprot.org/citations/22665496)).

Cellular Location

Secreted

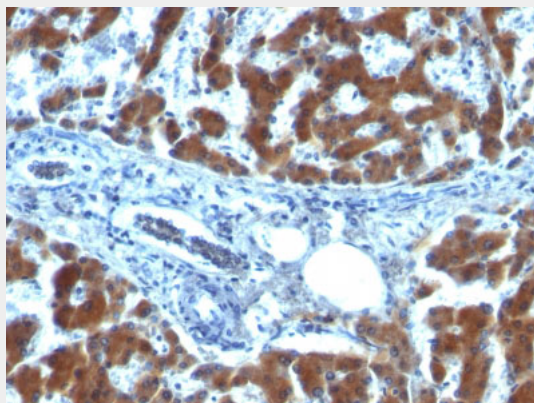
Tissue Location

Detected in blood plasma and in urine (at protein level).

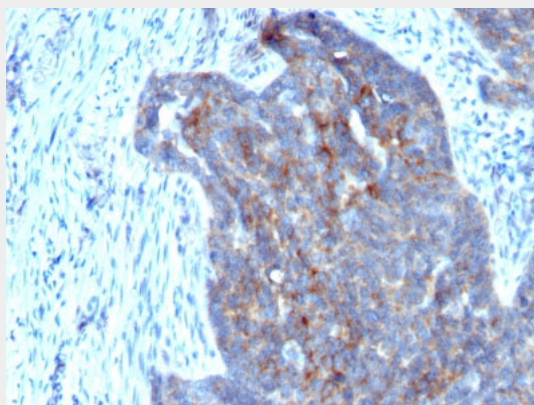
Retinol Binding Protein-1 (RBP1) Antibody - With BSA and Azide - Protocols

Provided below are standard protocols that you may find useful for product applications.

- [Western Blot](#)
- [Blocking Peptides](#)
- [Dot Blot](#)
- [Immunohistochemistry](#)
- [Immunofluorescence](#)
- [Immunoprecipitation](#)
- [Flow Cytometry](#)
- [Cell Culture](#)

Retinol Binding Protein-1 (RBP1) Antibody - With BSA and Azide - Images

Formalin-fixed, paraffin-embedded human Hepatocellular Carcinoma stained with RBP1 (RBP/872)



Formalin-fixed, paraffin-embedded human Ovarian Carcinoma stained with RBP1 (RBP/872)

Retinol Binding Protein-1 (RBP1) Antibody - With BSA and Azide - Background

Recognizes a protein of 21kDa-25kDa, identified as retinol binding protein-1 (RBP1). This protein belongs to the lipocalin family and is the specific carrier for retinol (vitamin A alcohol) in the blood. It delivers retinol from the liver stores to the peripheral tissues. In plasma, the RBP-retinol complex interacts with transthyretin, which prevents its loss by filtration through the kidney glomeruli. A

deficiency of vitamin A blocks secretion of the binding protein post-transnationally and results in defective delivery and supply to the epidermal cells.

Retinol Binding Protein-1 (RBP1) Antibody - With BSA and Azide - References

Naylor, H.M., et al. 1999. The structure of human retinol-binding protein (RBP) with its carrier protein transthyretin reveals an interaction with the carboxy-terminus of RBP. *Biochemistry* 38: 2647-2653