

**Bcl-2 (Apoptosis & Follicular Lymphoma Marker) Antibody - With BSA and Azide**  
**Mouse Monoclonal Antibody [Clone BCL2/796 ]**  
**Catalog # AH12251****Specification****Bcl-2 (Apoptosis & Follicular Lymphoma Marker) Antibody - With BSA and Azide - Product Information**

Application	WB, IHC, IF, FC
Primary Accession	<a href="#">P10415</a>
Other Accession	<a href="#">596</a> , <a href="#">150749</a>
Reactivity	Human
Host	Mouse
Clonality	Monoclonal
Isotype	Mouse / IgG1, kappa
Calculated MW	25-26kDa KDa

**Bcl-2 (Apoptosis & Follicular Lymphoma Marker) Antibody - With BSA and Azide - Additional Information****Gene ID** 596**Other Names**

Apoptosis regulator Bcl-2, BCL2

**Application Note**

<span class = "dilution\_WB">WB~~1:1000</span><br \><span class = "dilution\_IHC">IHC~~1:100~500</span><br \><span class = "dilution\_IF">IF~~1:50~200</span><br \><span class = "dilution\_FC">FC~~1:10~50</span>

**Storage**

Store at 2 to 8°C. Antibody is stable for 24 months.

**Precautions**

Bcl-2 (Apoptosis &amp; Follicular Lymphoma Marker) Antibody - With BSA and Azide is for research use only and not for use in diagnostic or therapeutic procedures.

**Bcl-2 (Apoptosis & Follicular Lymphoma Marker) Antibody - With BSA and Azide - Protein Information****Name** BCL2**Function**

Suppresses apoptosis in a variety of cell systems including factor-dependent lymphohematopoietic and neural cells (PubMed:<a href="http://www.uniprot.org/citations/1508712" target="\_blank">1508712</a>, PubMed:<a href="http://www.uniprot.org/citations/8183370" target="\_blank">8183370</a>). Regulates cell death by controlling the mitochondrial membrane permeability (PubMed:<a href="http://www.uniprot.org/citations/11368354" target="\_blank">11368354</a>). Appears to function in a feedback loop system with caspases

(PubMed:<a href="http://www.uniprot.org/citations/11368354" target="\_blank">11368354</a>). Inhibits caspase activity either by preventing the release of cytochrome c from the mitochondria and/or by binding to the apoptosis-activating factor (APAF-1) (PubMed:<a href="http://www.uniprot.org/citations/11368354" target="\_blank">11368354</a>). Also acts as an inhibitor of autophagy: interacts with BECN1 and AMBRA1 during non-starvation conditions and inhibits their autophagy function (PubMed:<a href="http://www.uniprot.org/citations/18570871" target="\_blank">18570871</a>, PubMed:<a href="http://www.uniprot.org/citations/20889974" target="\_blank">20889974</a>, PubMed:<a href="http://www.uniprot.org/citations/21358617" target="\_blank">21358617</a>). May attenuate inflammation by impairing NLRP1-inflammasome activation, hence CASP1 activation and IL1B release (PubMed:<a href="http://www.uniprot.org/citations/17418785" target="\_blank">17418785</a>).

#### Cellular Location

Mitochondrion outer membrane; Single-pass membrane protein. Nucleus membrane; Single-pass membrane protein. Endoplasmic reticulum membrane; Single-pass membrane protein. Cytoplasm {ECO:0000250|UniProtKB:P10417}

#### Tissue Location

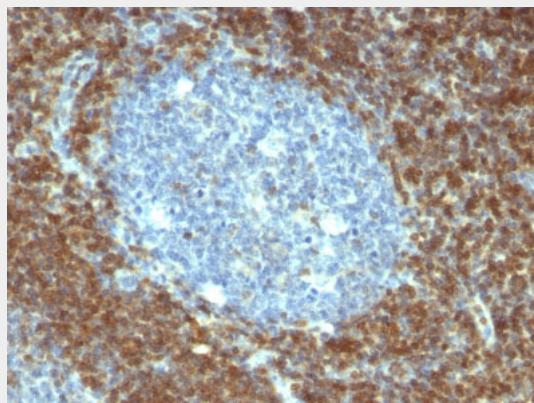
Expressed in a variety of tissues.

#### Bcl-2 (Apoptosis & Follicular Lymphoma Marker) Antibody - With BSA and Azide - Protocols

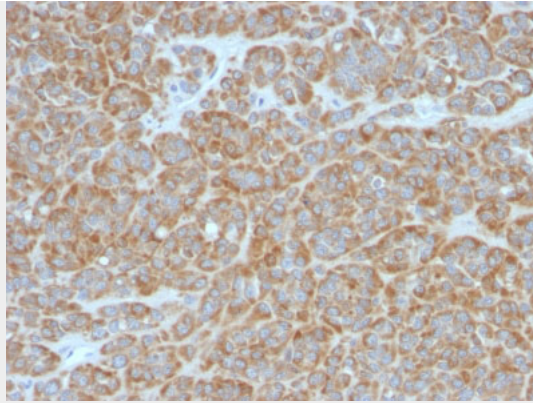
Provided below are standard protocols that you may find useful for product applications.

- [Western Blot](#)
- [Blocking Peptides](#)
- [Dot Blot](#)
- [Immunohistochemistry](#)
- [Immunofluorescence](#)
- [Immunoprecipitation](#)
- [Flow Cytometry](#)
- [Cell Culture](#)

#### Bcl-2 (Apoptosis & Follicular Lymphoma Marker) Antibody - With BSA and Azide - Images



Formalin-fixed, paraffin-embedded human Tonsil stained with Bcl-2 Monoclonal Antibody (BCL2/796).



Formalin-fixed, paraffin-embedded human Melanoma stained with Bcl-2 Monoclonal Antibody (BCL2/796).

#### **Bcl-2 (Apoptosis & Follicular Lymphoma Marker) Antibody - With BSA and Azide - Background**

This antibody recognizes a protein of 25-26kDa, identified as the bcl-2  $\alpha$  oncoprotein. It shows no cross-reaction with Bcl-x or Bax protein. Expression of bcl-2  $\alpha$  oncoprotein inhibits the programmed cell death (apoptosis). In most follicular lymphomas, neoplastic germinal centers express high levels of bcl-2  $\alpha$  protein, whereas the normal or hyperplastic germinal centers are negative. Consequently, this antibody is valuable when distinguishing between reactive and neoplastic follicular proliferation in lymph node biopsies. It may also be used in distinguishing between those follicular lymphomas that express bcl-2 protein and the small number in which the neoplastic cells are bcl-2 negative.

#### **Bcl-2 (Apoptosis & Follicular Lymphoma Marker) Antibody - With BSA and Azide - References**

Adams, J.M., et al. 1998. The Bcl-2 protein family: arbiters of cell survival. Science 281: 1322-1326