

Sex Hormone Binding Globulin (SHBG) Antibody - With BSA and Azide
Mouse Monoclonal Antibody [Clone SPM605]
Catalog # AH12302

Specification

Sex Hormone Binding Globulin (SHBG) Antibody - With BSA and Azide - Product Information

| | |
|-------------------|---|
| Application | IHC, IF, FC |
| Primary Accession | P04278 |
| Other Accession | 6462 , 632235 |
| Reactivity | Human |
| Host | Mouse |
| Clonality | Monoclonal |
| Isotype | Mouse / IgG1 |
| Calculated MW | 45kDa kDa |

Sex Hormone Binding Globulin (SHBG) Antibody - With BSA and Azide - Additional Information

Gene ID 6462

Other Names

Sex hormone-binding globulin, SHBG, Sex steroid-binding protein, SBP, Testis-specific androgen-binding protein, ABP, Testosterone-estradiol-binding globulin, TeBG, Testosterone-estrogen-binding globulin, SHBG

Application Note

IHC~~1:100~500
IF~~1:50~200
FC~~1:10~50

Storage

Store at 2 to 8°C. Antibody is stable for 24 months.

Precautions

Sex Hormone Binding Globulin (SHBG) Antibody - With BSA and Azide is for research use only and not for use in diagnostic or therapeutic procedures.

Sex Hormone Binding Globulin (SHBG) Antibody - With BSA and Azide - Protein Information

Name SHBG ([HGNC:10839](#))

Function

Functions as an androgen transport protein, but may also be involved in receptor mediated processes. Each dimer binds one molecule of steroid. Specific for 5-alpha-dihydrotestosterone, testosterone, and 17-beta-estradiol. Regulates the plasma metabolic clearance rate of steroid hormones by controlling their plasma concentration.

Cellular Location

Secreted. Note=In testis, it is synthesized by the Sertoli cells, secreted into the lumen of the seminiferous tubule and transported to the epididymis.

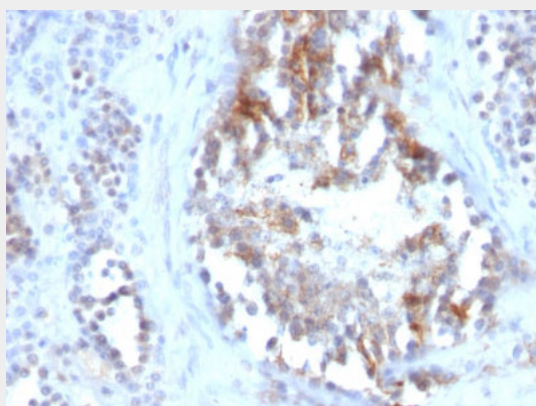
Tissue Location

Isoform 1 and isoform 2 are present in liver and testis

Sex Hormone Binding Globulin (SHBG) Antibody - With BSA and Azide - Protocols

Provided below are standard protocols that you may find useful for product applications.

- [Western Blot](#)
- [Blocking Peptides](#)
- [Dot Blot](#)
- [Immunohistochemistry](#)
- [Immunofluorescence](#)
- [Immunoprecipitation](#)
- [Flow Cytometry](#)
- [Cell Culture](#)

Sex Hormone Binding Globulin (SHBG) Antibody - With BSA and Azide - Images

Formalin-fixed, paraffin-embedded human Testicular Carcinoma stained with SHBG Monoclonal Antibody (SPM605)

Sex Hormone Binding Globulin (SHBG) Antibody - With BSA and Azide - Background

Recognizes a protein of 45kDa, identified as SHBG. It functions as an androgen transport protein, but may also be involved in receptor-mediated processes. Each dimer binds one molecule of steroid. It is specific for 5-alpha-dihydrotestosterone, testosterone, and 17-beta-estradiol. SHBG regulates the plasma metabolic clearance rate of steroid hormones by controlling their plasma concentration. In testis, it is synthesized by the Sertoli cells, secreted into the lumen of the seminiferous tubule and transported to the epididymis.

Sex Hormone Binding Globulin (SHBG) Antibody - With BSA and Azide - References

Grishkovskaya, I., et al. 2000. Crystal structure of human sex hormone-binding globulin: steroid transport by a laminin G-like domain. EMBO. J. 19: 504-512. |