

**CD43 (T-Cell Marker) Antibody - With BSA and Azide**  
**Mouse Monoclonal Antibody [Clone SPN/839 ]**  
**Catalog # AH12354****Specification**

---

**CD43 (T-Cell Marker) Antibody - With BSA and Azide - Product Information**

Application	WB, IHC, IF, FC
Primary Accession	<a href="#">P16150</a>
Other Accession	<a href="#">6693</a> , <a href="#">632188</a>
Reactivity	Human
Host	Mouse
Clonality	Monoclonal
Isotype	Mouse / IgG1, kappa
Calculated MW	95, 115, or 135kDa KDa

**CD43 (T-Cell Marker) Antibody - With BSA and Azide - Additional Information****Gene ID** 6693**Other Names**

Leukosialin, Galactoglycoprotein, GALGP, Leukocyte sialoglycoprotein, Sialophorin, CD43, SPN, CD43

**Application Note**

WB~~1:1000</span><br \><span class="dilution\_IHC">IHC~~1:100~500</span><br \><span class="dilution\_IF">IF~~1:50~200</span><br \><span class="dilution\_FC">FC~~1:10~50</span>

**Storage**

Store at 2 to 8°C. Antibody is stable for 24 months.

**Precautions**

CD43 (T-Cell Marker) Antibody - With BSA and Azide is for research use only and not for use in diagnostic or therapeutic procedures.

**CD43 (T-Cell Marker) Antibody - With BSA and Azide - Protein Information****Name** SPN**Synonyms** CD43**Function**

Predominant cell surface sialoprotein of leukocytes which regulates multiple T-cell functions, including T-cell activation, proliferation, differentiation, trafficking and migration. Positively regulates T-cell trafficking to lymph-nodes via its association with ERM proteins (EZR, RDX and MSN) (By similarity). Negatively regulates Th2 cell differentiation and predisposes the differentiation of T-cells towards a Th1 lineage commitment. Promotes the expression of IFN-gamma by T-cells during T-cell receptor (TCR) activation of naive cells and induces the

expression of IFN-gamma by CD4(+) T-cells and to a lesser extent by CD8(+) T-cells (PubMed:<a href="http://www.uniprot.org/citations/18036228" target="\_blank">18036228</a>). Plays a role in preparing T-cells for cytokine sensing and differentiation into effector cells by inducing the expression of cytokine receptors IFNGR and IL4R, promoting IFNGR and IL4R signaling and by mediating the clustering of IFNGR with TCR (PubMed:<a href="http://www.uniprot.org/citations/24328034" target="\_blank">24328034</a>). Acts as a major E-selectin ligand responsible for Th17 cell rolling on activated vasculature and recruitment during inflammation. Mediates Th17 cells, but not Th1 cells, adhesion to E-selectin. Acts as a T-cell counter-receptor for SIGLEC1 (By similarity).

#### Cellular Location

Membrane; Single-pass type I membrane protein. Cell projection, microvillus {ECO:0000250|UniProtKB:P13838}. Cell projection, uropodium {ECO:0000250|UniProtKB:P15702}. Note=Localizes to the uropodium and microvilli via its interaction with ERM proteins (EZR, RDX and MSN) {ECO:0000250|UniProtKB:P13838, ECO:0000250|UniProtKB:P15702}

#### Tissue Location

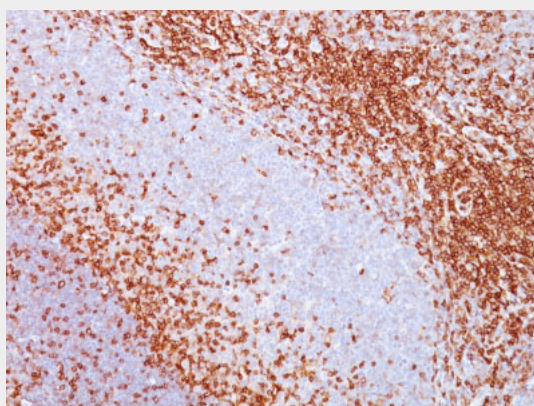
Cell surface of thymocytes, T-lymphocytes, neutrophils, plasma cells and myelomas

### CD43 (T-Cell Marker) Antibody - With BSA and Azide - Protocols

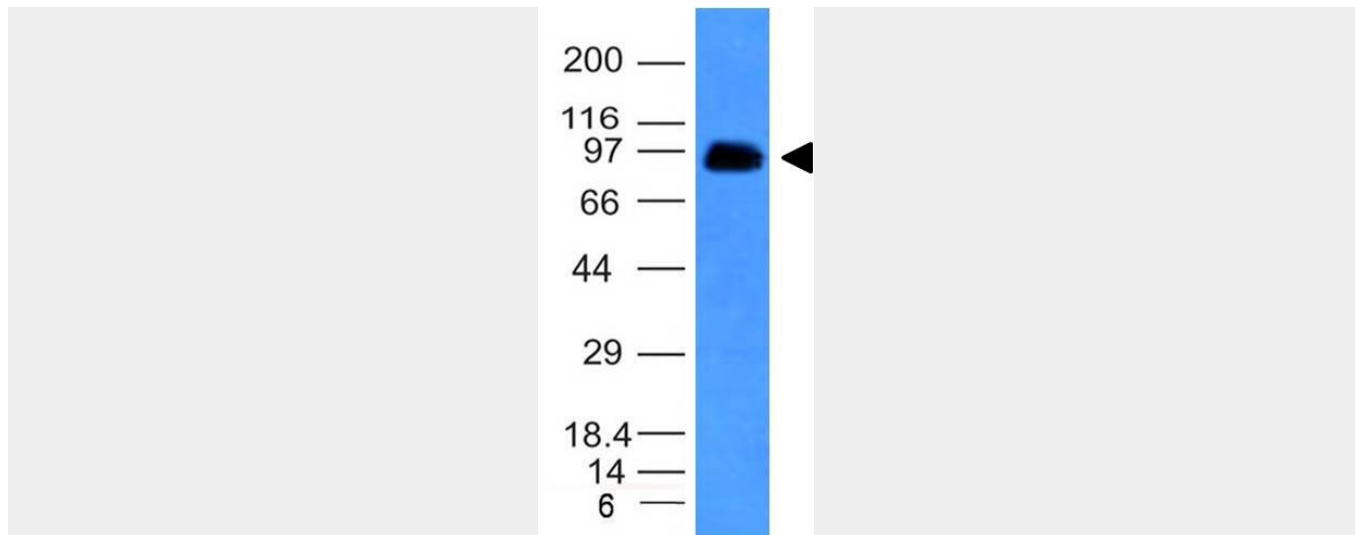
Provided below are standard protocols that you may find useful for product applications.

- [Western Blot](#)
- [Blocking Peptides](#)
- [Dot Blot](#)
- [Immunohistochemistry](#)
- [Immunofluorescence](#)
- [Immunoprecipitation](#)
- [Flow Cytometry](#)
- [Cell Culture](#)

### CD43 (T-Cell Marker) Antibody - With BSA and Azide - Images



Formalin-fixed, paraffin-embedded human Spleen stained with CD43 Monoclonal Antibody (SPN/839).



Western Blot Analysis of human Spleen Lysate using CD43 Monoclonal Antibody (SPN/839).

#### **CD43 (T-Cell Marker) Antibody - With BSA and Azide - Background**

It recognizes a cell surface glycoprotein of 95/115/135kDa (depending upon the extent of glycosylation), identified as CD43. 70-90% of T-cell lymphomas and from 22-37% of B-cell lymphomas express CD43. No reactivity has been observed with reactive B-cells. So a B-lineage population that co-expresses CD43 is highly likely to be a malignant lymphoma, especially a low-grade lymphoma, rather than a reactive B-cell population. When CD43 antibody is used in combination with anti-CD20, effective immunophenotyping of the lymphomas in formalin-fixed tissues can be obtained. Co-staining of a lymphoid infiltrate with anti-CD20 and anti-CD43 argues against a reactive process and favors a diagnosis of lymphoma.

#### **CD43 (T-Cell Marker) Antibody - With BSA and Azide - References**

Baeckstrom, D., et al. 1995. Expression of the leukocyte-associated sialo-glycoprotein CD43 by a colon carcinoma cell line. J. Biol. Chem. 270: 13688-13692