

**CD147 / EMMPRIN / Neurothelin Antibody - With BSA and Azide**  
**Mouse Monoclonal Antibody [Clone BSG/963 ]**  
**Catalog # AH12369****Specification****CD147 / EMMPRIN / Neurothelin Antibody - With BSA and Azide - Product Information**

Application	IHC, IF, FC
Primary Accession	<a href="#">P35613</a>
Other Accession	<a href="#">682</a> , <a href="#">501293</a>
Reactivity	Human
Host	Mouse
Clonality	Monoclonal
Isotype	Mouse / IgG1
Calculated MW	35kDa (non-reduced); 40kDa (reduced) KDa

**CD147 / EMMPRIN / Neurothelin Antibody - With BSA and Azide - Additional Information****Gene ID** 682**Other Names**

Basigin, 5F7, Collagenase stimulatory factor, Extracellular matrix metalloproteinase inducer, EMMPRIN, Leukocyte activation antigen M6, OK blood group antigen, Tumor cell-derived collagenase stimulatory factor, TCSF, CD147, BSG

**Application Note**

IHC~~1:100~500  
IF~~1:50~200  
FC~~1:10~50

**Storage**

Store at 2 to 8°C. Antibody is stable for 24 months.

**Precautions**

CD147 / EMMPRIN / Neurothelin Antibody - With BSA and Azide is for research use only and not for use in diagnostic or therapeutic procedures.

**CD147 / EMMPRIN / Neurothelin Antibody - With BSA and Azide - Protein Information****Name** BSG ([HGNC:1116](#))**Function**

[Isoform 1]: Essential for normal retinal maturation and development (By similarity). Acts as a retinal cell surface receptor for NXNL1 and plays an important role in NXNL1-mediated survival of retinal cone photoreceptors (PubMed: [25957687](http://www.uniprot.org/citations/25957687)). In association with glucose transporter SLC16A1/GLUT1 and NXNL1, promotes retinal cone survival by enhancing aerobic glycolysis and accelerating the entry of glucose into photoreceptors (PubMed: [25957687](http://www.uniprot.org/citations/25957687)). May act as a potent stimulator of IL6 secretion in multiple cell

lines that include monocytes (PubMed:<a href="http://www.uniprot.org/citations/21620857" target="\_blank">21620857</a>).

#### **Cellular Location**

Melanosome. Note=Identified by mass spectrometry in melanosome fractions from stage I to stage IV. [Isoform 2]: Cell membrane; Single-pass type I membrane protein {ECO:0000250|UniProtKB:P26453}. Endosome Endoplasmic reticulum membrane; Single-pass type I membrane protein {ECO:0000250|UniProtKB:P26453} Basolateral cell membrane; Single-pass type I membrane protein {ECO:0000250|UniProtKB:P26453} [Isoform 4]: Cell membrane; Single-pass type I membrane protein {ECO:0000250|UniProtKB:P26453}

#### **Tissue Location**

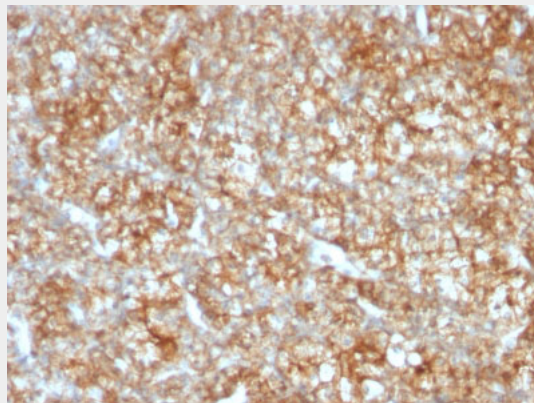
[Isoform 1]: Retina-specific (PubMed:25957687). Expressed in retinal cone photoreceptors (at protein level) (PubMed:25957687). [Isoform 3]: Highly expressed in the bone marrow, fetal liver, lung, testis and thymus.

### **CD147 / EMMPRIN / Neurothelin Antibody - With BSA and Azide - Protocols**

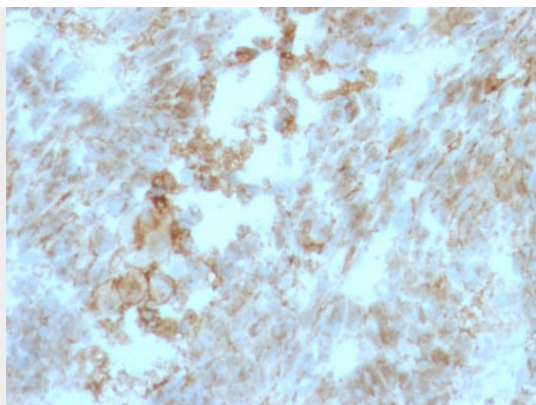
Provided below are standard protocols that you may find useful for product applications.

- [Western Blot](#)
- [Blocking Peptides](#)
- [Dot Blot](#)
- [Immunohistochemistry](#)
- [Immunofluorescence](#)
- [Immunoprecipitation](#)
- [Flow Cytometry](#)
- [Cell Culture](#)

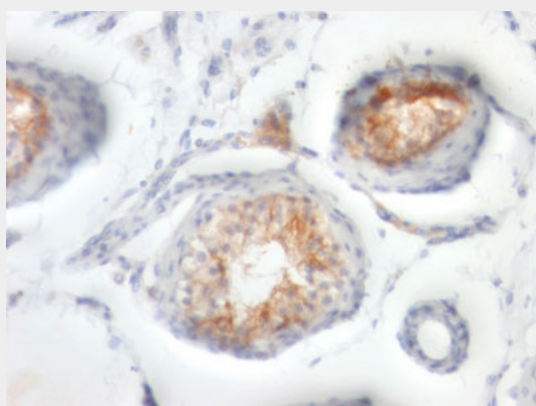
### **CD147 / EMMPRIN / Neurothelin Antibody - With BSA and Azide - Images**



Formalin-fixed, paraffin-embedded human Renal Cell Carcinoma stained with CD147 Monoclonal Antibody (BSG/963).



Formalin-fixed, paraffin-embedded human Colon Carcinoma stained with CD147 Monoclonal Antibody (BSG/963).



Formalin-fixed, paraffin-embedded human Testicular Carcinoma stained with CD147 Monoclonal Antibody (BSG/963).

#### **CD147 / EMMPRIN / Neurothelin Antibody - With BSA and Azide - Background**

This MAb recognizes extracellular epitope of human CD147. It is expressed more intensely on thymocytes than on mature peripheral blood T cells. CD147 is important in spermatogenesis, embryo implantation, neural network formation, and tumor progression. It stimulates the production of interstitial collagenase, gelatinase A, stromelysin-1 and various metalloproteinases (MMPs) by fibroblasts. These enzymes are important factors in cancer invasion and metastasis.

#### **CD147 / EMMPRIN / Neurothelin Antibody - With BSA and Azide - References**

Kirsch AH et. al. Tissue Antigens. 1997;50(2):147-52