

**CD106 / VCAM1 (Activated Endothelial Cell Marker) Antibody - With BSA and Azide**  
**Mouse Monoclonal Antibody [Clone VCAM1/843 ]**  
**Catalog # AH12505****Specification****CD106 / VCAM1 (Activated Endothelial Cell Marker) Antibody - With BSA and Azide - Product Information**

Application	IHC, IF, FC
Primary Accession	<a href="#">P19320</a>
Other Accession	<a href="#">7412</a> , <a href="#">109225</a>
Reactivity	Human
Host	Mouse
Clonality	Monoclonal
Isotype	Mouse / IgG1, kappa
Calculated MW	110kDa KDa

**CD106 / VCAM1 (Activated Endothelial Cell Marker) Antibody - With BSA and Azide - Additional Information****Gene ID** 7412**Other Names**

Vascular cell adhesion protein 1, V-CAM 1, VCAM-1, INCAM-100, CD106, VCAM1, L1CAM

**Application Note****Storage**

Store at 2 to 8°C. Antibody is stable for 24 months.

**Precautions**

CD106 / VCAM1 (Activated Endothelial Cell Marker) Antibody - With BSA and Azide is for research use only and not for use in diagnostic or therapeutic procedures.

**CD106 / VCAM1 (Activated Endothelial Cell Marker) Antibody - With BSA and Azide - Protein Information****Name** VCAM1**Function**

Cell adhesion glycoprotein predominantly expressed on the surface of endothelial cells that plays an important role in immune surveillance and inflammation (PubMed:<a href="http://www.uniprot.org/citations/31310649" target="\_blank">31310649</a>). Acts as a major regulator of leukocyte adhesion to the endothelium through interaction with different types of integrins (PubMed:<a href="http://www.uniprot.org/citations/10209034" target="\_blank">10209034</a>). During inflammatory responses, binds ligands on the surface of activated endothelial cells to initiate the activation of calcium channels and the plasma

membrane-associated small GTPase RAC1 leading to leukocyte transendothelial migration (PubMed:<a href="http://www.uniprot.org/citations/22970700" target="\_blank">22970700</a>). Also serves as a quality- control checkpoint for entry into bone marrow by providing a 'don't-eat-me' stamping in the context of major histocompatibility complex (MHC) class-I presentation (PubMed:<a href="http://www.uniprot.org/citations/35210567" target="\_blank">35210567</a>).

**Cellular Location**

[Vascular cell adhesion protein 1]: Cell membrane; Single-pass type I membrane protein

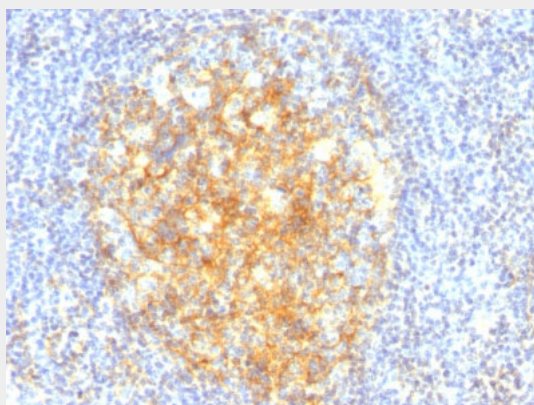
**Tissue Location**

Expressed on inflamed vascular endothelium, as well as on macrophage-like and dendritic cell types in both normal and inflamed tissue

**CD106 / VCAM1 (Activated Endothelial Cell Marker) Antibody - With BSA and Azide - Protocols**

Provided below are standard protocols that you may find useful for product applications.

- [Western Blot](#)
- [Blocking Peptides](#)
- [Dot Blot](#)
- [Immunohistochemistry](#)
- [Immunofluorescence](#)
- [Immunoprecipitation](#)
- [Flow Cytometry](#)
- [Cell Culture](#)

**CD106 / VCAM1 (Activated Endothelial Cell Marker) Antibody - With BSA and Azide - Images**

Formalin-fixed, paraffin-embedded human Tonsil stained with CD106 Monoclonal Antibody (VCAM1/843).

**CD106 / VCAM1 (Activated Endothelial Cell Marker) Antibody - With BSA and Azide - Background**

Recognizes a protein of 110kDa, identified as CD106 (also known as vascular cell adhesion molecule-1 (VCAM-1) and INCAM-100). CD106 is a member of the Ig superfamily of adhesion molecules and is expressed at high levels on cytokine stimulated vascular endothelial cells, and at minimal levels on un-stimulated endothelial cells. It is also present on follicular and inter-follicular dendritic cells of lymph nodes, myoblasts, and some macrophages. CD106 serves as a ligand for

leukocyte integrin (VLA-4 or CD49d/CD29) and mediates cell adhesion of leukocytes to activated endothelium. It plays a role in various immunological and inflammatory responses.

**CD106 / VCAM1 (Activated Endothelial Cell Marker) Antibody - With BSA and Azide -  
References**

Vermot-Desroches C et al. Heterogeneity of antigen expression among human umbilical cord vascular endothelial cells: identification of cell subsets by co-expression of haemopoietic antigens. Immunol Lett 1995, 48(1):1-9 | Rice GE et al. Vascular and nonvascular expression of INCAM-110. A target for mononuclear leukocyte adhesion in normal and inflamed human tissues. Am J Pathol 1991, 138(2):385-393 | Huang MJ et al. Expression of vascular cell adhesion molecule-1 by follicular dendritic cells. Leuk Lymphoma 1995, 18(3-4):259-264