

---

**HCG Holo (Pregnancy & Choriocarcinoma Marker) Antibody - With BSA and Azide**  
**Mouse Monoclonal Antibody [Clone HCGab/52 ]**  
**Catalog # AH12877**

**Specification**

---

**HCG Holo (Pregnancy & Choriocarcinoma Marker) Antibody - With BSA and Azide -  
Product Information**

Application	IHC
Primary Accession	<a href="#">P01215</a>
Other Accession	<a href="#">1081</a> , <a href="#">1082</a> , <a href="#">172944</a> , <a href="#">119689</a> , <a href="#">P01233</a>
Reactivity	Human
Host	Mouse
Clonality	Monoclonal
Isotype	Mouse / IgG1, kappa
Calculated MW	~35kDa (intact hCG) kDa

**HCG Holo (Pregnancy & Choriocarcinoma Marker) Antibody - With BSA and Azide -  
Additional Information**

**Gene ID** 1081

**Other Names**

Glycoprotein hormones alpha chain, Anterior pituitary glycoprotein hormones common subunit alpha, Choriogonadotropin alpha chain, Chorionic gonadotrophin subunit alpha, CG-alpha, Follicle-stimulating hormone alpha chain, FSH-alpha, Follicitropin alpha chain, Luteinizing hormone alpha chain, LSH-alpha, Lutropin alpha chain, Thyroid-stimulating hormone alpha chain, TSH-alpha, Thyrotropin alpha chain, CGA

**Application Note**

<span class = "dilution\_IHC">IHC~~1:100~500</span>

**Storage**

Store at 2 to 8°C. Antibody is stable for 24 months.

**Precautions**

HCG Holo (Pregnancy & Choriocarcinoma Marker) Antibody - With BSA and Azide is for research use only and not for use in diagnostic or therapeutic procedures.

**HCG Holo (Pregnancy & Choriocarcinoma Marker) Antibody - With BSA and Azide -  
Protein Information**

**Name** CGA

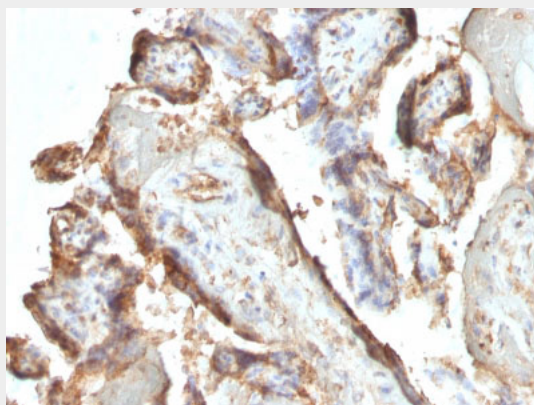
**Function**

Shared alpha chain of the active heterodimeric glycoprotein hormones thyrotropin/thyroid stimulating hormone/TSH, lutropin/luteinizing hormone/LH, follitropin/follicle stimulating hormone/FSH and choriogonadotropin/CG. These hormones bind specific receptors on target cells that in turn activate downstream signaling pathways.

**Cellular Location**  
Secreted**HCG Holo (Pregnancy & Choriocarcinoma Marker) Antibody - With BSA and Azide - Protocols**

Provided below are standard protocols that you may find useful for product applications.

- [Western Blot](#)
- [Blocking Peptides](#)
- [Dot Blot](#)
- [Immunohistochemistry](#)
- [Immunofluorescence](#)
- [Immunoprecipitation](#)
- [Flow Cytometry](#)
- [Cell Culture](#)

**HCG Holo (Pregnancy & Choriocarcinoma Marker) Antibody - With BSA and Azide - Images**

Formalin-fixed, paraffin-embedded human Placenta stained with hCG Monoclonal Antibody (HCGab/52).

**HCG Holo (Pregnancy & Choriocarcinoma Marker) Antibody - With BSA and Azide - Background**

This MAb is a very special because it reacts ONLY with the intact-HCG and not with either free alpha- or free beta-chain of HCG. HCG is a glycoprotein and is composed of two non-identical, non-covalently linked polypeptide chains designated as the  $\alpha$  and  $\beta$  subunits. The  $\alpha$  subunit is identical to that of thyroid stimulating hormone (TSH), follicle stimulating hormone (FSH), and luteinizing hormone (LH). HCG is secreted in large quantities by normal trophoblasts. It is present only in trace amounts in non-pregnant urine and sera but rises sharply during pregnancy. HCG MAb detects cells and tumors of trophoblastic origin such as choriocarcinoma. Large cell carcinoma and adenocarcinoma of the lung demonstrate anti-hCG positivity in 90% and 60% of cases respectively. 20% of lung squamous cell carcinomas are positive. HCG expression by non-trophoblastic tumors may indicate aggressive behavior.

**HCG Holo (Pregnancy & Choriocarcinoma Marker) Antibody - With BSA and Azide - References**

McDonald EA et. al. Endocrinology 150:4358-65 (2009).