

KBA.62 (Melanoma Associated Antigen) Antibody - With BSA and Azide
Mouse Monoclonal Antibody [Clone KBA.62]
Catalog # AH12895**Specification**

KBA.62 (Melanoma Associated Antigen) Antibody - With BSA and Azide - Product Information

Application	IHC, IF
Reactivity	Human
Host	Mouse
Clonality	Monoclonal
Isotype	Mouse / IgG1, kappa
Calculated MW	Multiple (140, 135 and 128kDa and two weak bands of 88 and 73kDa) KDa

KBA.62 (Melanoma Associated Antigen) Antibody - With BSA and Azide - Additional Information**Application Note**

IHC~~1:100~500
IF~~1:50~200

Storage

Store at 2 to 8°C. Antibody is stable for 24 months.

Precautions

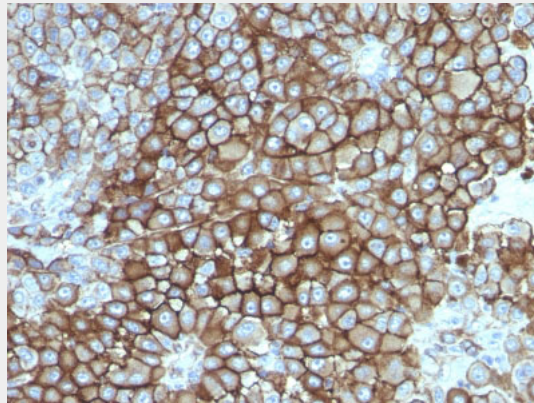
KBA.62 (Melanoma Associated Antigen) Antibody - With BSA and Azide is for research use only and not for use in diagnostic or therapeutic procedures.

KBA.62 (Melanoma Associated Antigen) Antibody - With BSA and Azide - Protein Information**KBA.62 (Melanoma Associated Antigen) Antibody - With BSA and Azide - Protocols**

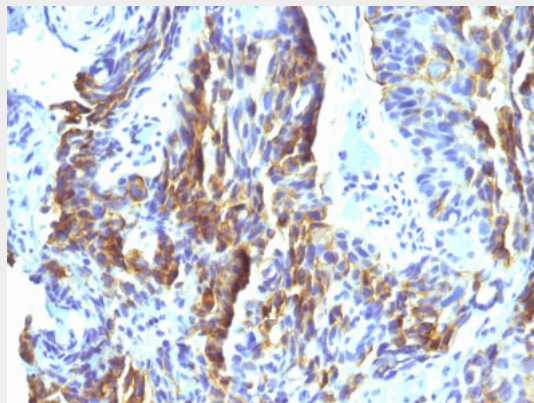
Provided below are standard protocols that you may find useful for product applications.

- [Western Blot](#)
- [Blocking Peptides](#)
- [Dot Blot](#)
- [Immunohistochemistry](#)
- [Immunofluorescence](#)
- [Immunoprecipitation](#)
- [Flow Cytometry](#)
- [Cell Culture](#)

KBA.62 (Melanoma Associated Antigen) Antibody - With BSA and Azide - Images



Formalin-fixed, paraffin-embedded human Melanoma stained with Melanoma Monoclonal Antibody (KBA.62).



Formalin-fixed, paraffin-embedded human Tongue stained with Melanoma Monoclonal Antibody (KBA.62).

KBA.62 (Melanoma Associated Antigen) Antibody - With BSA and Azide - Background

KBA.62 is a novel anti-melanoma antibody. It reacts positively against melanocytic tumors but not other tumors, thus demonstrating specificity and sensitivity. Moreover, it reacts positively against junctional nevus cells but not intradermal nevi, and against fetal melanocytes but not normal adult melanocytes. KBA.62 antibody is useful in identifying malignant melanomas. Metastatic amelanotic melanoma can often be confused with a variety of poorly differentiated carcinomas, large cell lymphomas, sarcomas, spindle cell carcinomas and various types of mesenchymal neoplasms. A keratin-negative, vimentin-rich neoplasm that immuno-reacts with antibody to S-100 protein and with KBA.62 antibody is, with rare exception, a melanoma. Anti-KBA.62 is a useful additional marker for melanoma, specifically in desmoplastic/spindle cell cases and in the context of micro-metastasis in sentinel lymph node.

KBA.62 (Melanoma Associated Antigen) Antibody - With BSA and Azide - References

E Cohen-Knafo, T al Saati, J Aziza, E Ralfkiaer, J Selves, B Gorguet, and G Delsol. Production and characterisation of an antimelanoma monoclonal antibody KBA.62 using a new melanoma cell line reactive on paraffin wax embedded sections. J Clin Pathol. 1995; 48(9): 826-831. | Cécile Pagès et. al. KBA.62: a useful marker for primary and metastatic melanomas. Human Pathology 39(8):1136-1142; 2008