

**Cytokeratin, pan (Epithelial Marker) Antibody - With BSA and Azide**  
**Mouse Monoclonal Antibody [Clone PAN-CK (Cocktail) ]**  
**Catalog # AH12926**

**Specification**

---

**Cytokeratin, pan (Epithelial Marker) Antibody - With BSA and Azide - Product Information**

Application	,1,2,3,4,
Primary Accession	<a href="#">Q7Z794</a>
Other Accession	<a href="#">374454 (KRT77)</a> , <a href="#">51350 (KRT76)</a> , <a href="#">334989 (KRT77)</a> , <a href="#">654392 (KRT76)</a> , <a href="#">Q01546 (KRT76)</a>
Reactivity	Human, Mouse, Rat, Rabbit, Monkey, Chicken, Bovine, Dog
Host	Mouse
Clonality	Monoclonal
Isotype	Mouse / IgG's, kappa
Calculated MW	40-67kDa (Multiple) KDa

**Cytokeratin, pan (Epithelial Marker) Antibody - With BSA and Azide - Additional Information**

**Gene ID** 374454

**Other Names**

Keratin, type II cytoskeletal 1b, Cytokeratin-1B, CK-1B, Keratin-77, K77, Type-II keratin Kb39, KRT77, KRT1B

**Storage**

Store at 2 to 8°C. Antibody is stable for 24 months.

**Precautions**

Cytokeratin, pan (Epithelial Marker) Antibody - With BSA and Azide is for research use only and not for use in diagnostic or therapeutic procedures.

**Cytokeratin, pan (Epithelial Marker) Antibody - With BSA and Azide - Protein Information**

**Name** KRT77

**Synonyms** KRT1B

**Tissue Location**

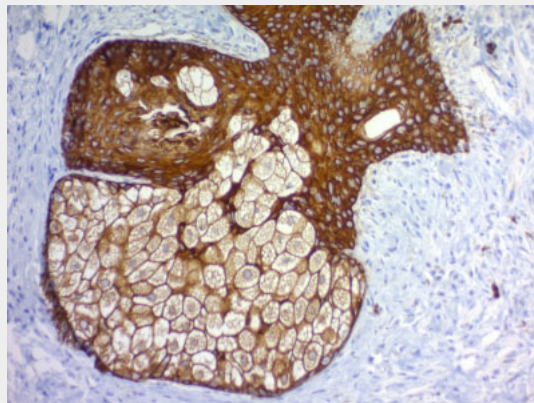
Expressed exclusively in skin.

**Cytokeratin, pan (Epithelial Marker) Antibody - With BSA and Azide - Protocols**

Provided below are standard protocols that you may find useful for product applications.

- [Western Blot](#)
- [Blocking Peptides](#)
- [Dot Blot](#)
- [Immunohistochemistry](#)
- [Immunofluorescence](#)
- [Immunoprecipitation](#)
- [Flow Cytometry](#)
- [Cell Culture](#)

#### **Cytokeratin, pan (Epithelial Marker) Antibody - With BSA and Azide - Images**



Formalin-fixed, paraffin-embedded human Skin stained with Cytokeratin, pan Monoclonal Antibody cocktail (PAN-CK).

#### **Cytokeratin, pan (Epithelial Marker) Antibody - With BSA and Azide - Background**

Twenty human keratins are resolved with two-dimensional gel electrophoresis into acidic (pI 6.0) subfamilies. This antibody cocktail recognizes acidic (Type I or LMW) and basic (Type II or HMW) cytokeratins, with 67kDa (CK1); 64kDa (CK3); 59kDa (CK4); 58kDa (CK5); 56kDa (CK6); 55kDa (CK7); 52kDa (CK8); 56.5kDa (CK10); 53kDa (CK13); 50kDa (CK14); 50kDa (CK15); 48kDa (CK16); 46kDa (CK17); 45kDa (CK18) and 40kDa (CK19). Many studies have shown the usefulness of keratins as markers in cancer research and tumor diagnosis. KRT-PAN is a broad spectrum anti pan-cytokeratin antibody cocktail, which differentiates epithelial tumors from non-epithelial tumors e.g. squamous vs. adenocarcinoma of the lung, liver carcinoma, breast cancer, and esophageal cancer. It is useful in characterizing the source of various neoplasms and to study the distribution of cytokeratin containing cells in epithelia during normal development and during the development of epithelial neoplasms. This antibody stains cytokeratins present in normal and abnormal human tissues and shows high sensitivity in the recognition of epithelial cells and carcinomas.

#### **Cytokeratin, pan (Epithelial Marker) Antibody - With BSA and Azide - References**

Woodcock-Mitchell J et. al. Journal of Cell Biology 1982;95:580-8. | Tseng SCG et. al. Cell 1982; 30361