

**Cytokeratin 8/18 Antibody - With BSA and Azide**  
**Mouse Monoclonal Antibody [Clone C-51 ]**  
**Catalog # AH12929****Specification**

---

**Cytokeratin 8/18 Antibody - With BSA and Azide - Product Information**

Application	WB, IHC, IF, FC
Primary Accession	<a href="#">P05787</a>
Other Accession	<a href="#">3856 (CK8)</a> , <a href="#">3875 (CK18)</a> , <a href="#">533782</a> , <a href="#">708445 (CK8)</a> , <a href="#">406013 (CK18)</a> , <a href="#">P05783 (CK18)</a>
Reactivity	Human, Monkey, Pig, Bovine, Sheep
Host	Mouse
Clonality	Monoclonal
Isotype	Mouse / IgG1, kappa
Calculated MW	52.5kDa (CK8); 45kDa (CK18) KDa

**Cytokeratin 8/18 Antibody - With BSA and Azide - Additional Information****Gene ID** 3856**Other Names**

Keratin, type II cytoskeletal 8, Cytokeratin-8, CK-8, Keratin-8, K8, Type-II keratin Kb8, KRT8, CYK8

**Application Note**

WB~~1:1000  
IHC~~1:100~500  
IF~~1:50~200  
FC~~1:10~50

**Storage**

Store at 2 to 8°C. Antibody is stable for 24 months.

**Precautions**

Cytokeratin 8/18 Antibody - With BSA and Azide is for research use only and not for use in diagnostic or therapeutic procedures.

**Cytokeratin 8/18 Antibody - With BSA and Azide - Protein Information****Name** KRT8**Synonyms** CYK8**Function**

Together with KRT19, helps to link the contractile apparatus to dystrophin at the costameres of striated muscle.

**Cellular Location**

Cytoplasm. Nucleus, nucleoplasm {ECO:0000250|UniProtKB:Q10758}. Nucleus matrix {ECO:0000250|UniProtKB:Q10758}

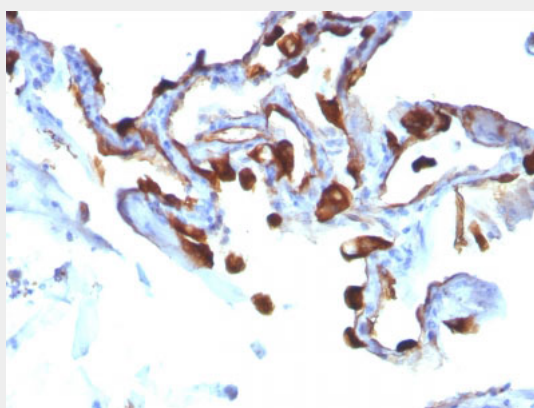
**Tissue Location**

Observed in muscle fibers accumulating in the costameres of myoplasm at the sarcolemma membrane in structures that contain dystrophin and spectrin. Expressed in gingival mucosa and hard palate of the oral cavity.

**Cytokeratin 8/18 Antibody - With BSA and Azide - Protocols**

Provided below are standard protocols that you may find useful for product applications.

- [Western Blot](#)
- [Blocking Peptides](#)
- [Dot Blot](#)
- [Immunohistochemistry](#)
- [Immunofluorescence](#)
- [Immunoprecipitation](#)
- [Flow Cytometry](#)
- [Cell Culture](#)

**Cytokeratin 8/18 Antibody - With BSA and Azide - Images**

Formalin-fixed, paraffin-embedded human Lung Carcinoma stained with Cytokeratin 8/18 Monoclonal Antibody (C-51).

**Cytokeratin 8/18 Antibody - With BSA and Azide - Background**

Cytokeratin 8 (CK8) belongs to the type II (or B or basic) subfamily of high molecular weight cytokeratins and exists in combination with cytokeratin 18 (CK18). This MAb recognizes all simple epithelia including glandular epithelium, for example thyroid, female breast, gastrointestinal tract, respiratory tract, and urogenital tract including transitional epithelium. All adenocarcinomas and most squamous carcinomas are positive but keratinizing squamous carcinomas are usually negative. This antibody is useful in demonstrating the presence of Paget cells; there is very little keratin 18 in the normal epidermis so only Paget cells are stained.

**Cytokeratin 8/18 Antibody - With BSA and Azide - References**

Bartek et al. J. Pathology, 164:215-24 (1991). | Bartkova et al. Neoplasma 38(4), 439-46 (1991). |