

Actin, Muscle Specific (Muscle Cell Marker) Antibody - With BSA and Azide
Mouse Monoclonal Antibody [Clone MSA/953]
Catalog # AH12999**Specification****Actin, Muscle Specific (Muscle Cell Marker) Antibody - With BSA and Azide - Product Information**

Application	WB, IHC, IF, FC
Primary Accession	P62736
Other Accession	58 , 59 , 70 , 118127 , 1288 , 500483 , P68032 , P68133
Reactivity	Human, Rat, Rabbit
Host	Mouse
Clonality	Monoclonal
Isotype	Mouse / IgG1, kappa
Calculated MW	Multiple KDa

Actin, Muscle Specific (Muscle Cell Marker) Antibody - With BSA and Azide - Additional Information**Gene ID** 59**Other Names**

Actin, aortic smooth muscle, Alpha-actin-2, Cell growth-inhibiting gene 46 protein, ACTA2, ACTSA, ACTVS

Application Note

WB~~1:1000
IHC~~1:100~500
IF~~1:50~200
FC~~1:10~50

Storage

Store at 2 to 8°C. Antibody is stable for 24 months.

Precautions

Actin, Muscle Specific (Muscle Cell Marker) Antibody - With BSA and Azide is for research use only and not for use in diagnostic or therapeutic procedures.

Actin, Muscle Specific (Muscle Cell Marker) Antibody - With BSA and Azide - Protein Information**Name** ACTA2**Synonyms** ACTSA, ACTVS**Function**

Actins are highly conserved proteins that are involved in various types of cell motility and are ubiquitously expressed in all eukaryotic cells.

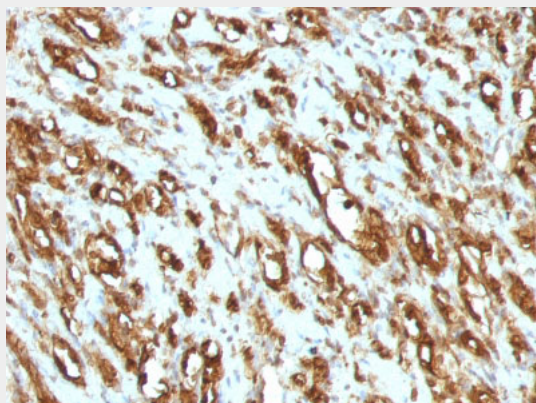
Cellular Location

Cytoplasm, cytoskeleton.

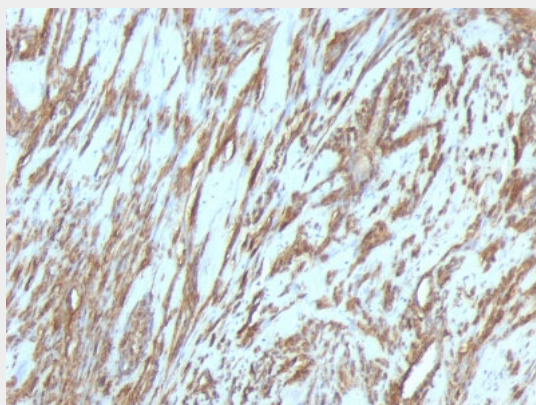
Actin, Muscle Specific (Muscle Cell Marker) Antibody - With BSA and Azide - Protocols

Provided below are standard protocols that you may find useful for product applications.

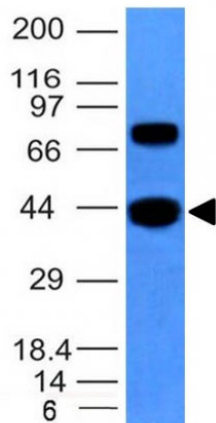
- [Western Blot](#)
- [Blocking Peptides](#)
- [Dot Blot](#)
- [Immunohistochemistry](#)
- [Immunofluorescence](#)
- [Immunoprecipitation](#)
- [Flow Cytometry](#)
- [Cell Culture](#)

Actin, Muscle Specific (Muscle Cell Marker) Antibody - With BSA and Azide - Images

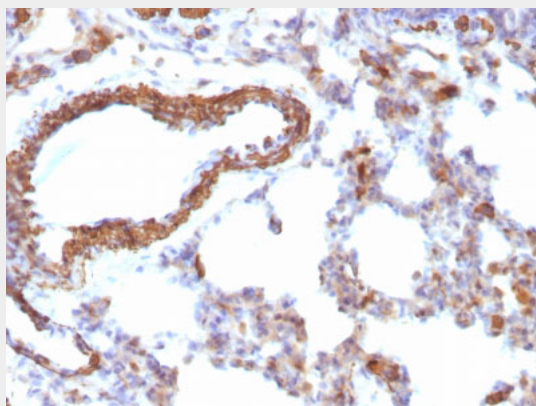
Formalin-fixed, paraffin-embedded human Rhabdomyosarcoma stained with Muscle Specific Actin Monoclonal Antibody (MSA/953)



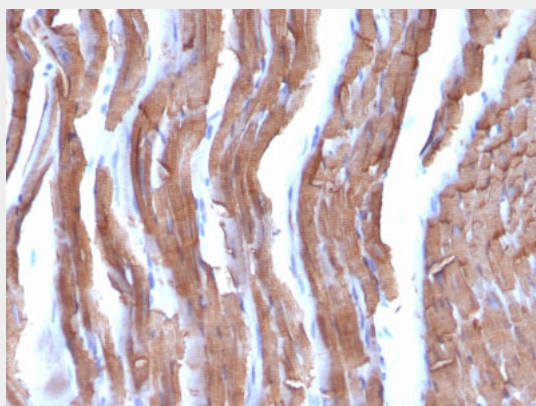
Formalin-fixed, paraffin-embedded human Leiomyosarcoma stained with Muscle Specific Actin Monoclonal Antibody (MSA/953)



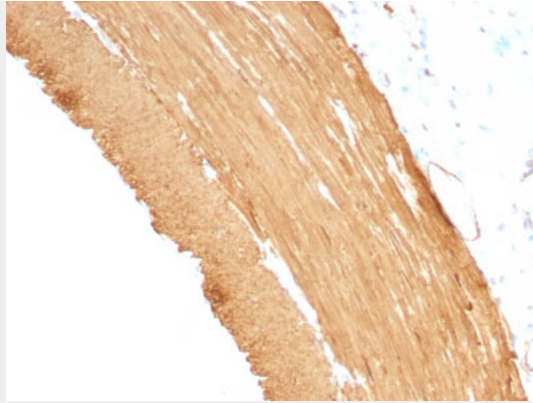
Western Blot of hSKM Cell Lysate using Muscle Specific Actin Monoclonal Antibody (MSA/953)



Formalin-fixed, paraffin-embedded Rat Lung stained with Muscle Specific Actin Monoclonal Antibody (MSA/953)



Formalin-fixed, paraffin-embedded Rat Heart stained with Muscle Specific Actin Monoclonal Antibody (MSA/953)



Formalin-fixed, paraffin-embedded Rat Stomach stained with Muscle Specific Actin Monoclonal Antibody (MSA/953)



Formalin-fixed, paraffin-embedded Rat Skeletal Muscle stained with Muscle Specific Actin Monoclonal Antibody (MSA/953)

Actin, Muscle Specific (Muscle Cell Marker) Antibody - With BSA and Azide - Background

This antibody recognizes actin of skeletal, cardiac, and smooth muscle cells. It is not reactive with other mesenchymal cells except for myoepithelium. Actin can be resolved on the basis of its isoelectric points into three distinctive components: alpha, beta, and gamma in order of increasing isoelectric point. Anti-muscle specific actin recognizes alpha and gamma isotypes of all muscle groups. Non-muscle cells such as vascular endothelial cells and connective tissues are non-reactive. Also, neoplastic cells of non-muscle-derived tissue such as carcinomas, melanomas, and lymphomas are negative. It stains tumors of smooth muscle (leiomyomas and leiomyosarcomas) as well as skeletal muscle (rhabdomyomas and rhabdomyosarcomas).

Actin, Muscle Specific (Muscle Cell Marker) Antibody - With BSA and Azide - References

Barkalow, K. and Hartwig, J.H. 1995. Actin cytoskeleton. Setting the pace of cell movement. Curr. Biol. 5: 1000-1002. |