

Anti-Ksp-Cadherin / CDH16 Antibody
Recombinant Rabbit Monoclonal Antibody
Catalog # AH13079**Specification**

Anti-Ksp-Cadherin / CDH16 Antibody - Product Information

Application	IHC-P, IF, FC
Primary Accession	075309
Other Accession	513660
Reactivity	Human, Mouse, Rat
Host	Rabbit
Clonality	Monoclonal
Isotype	Rabbit / IgG, kappa
Calculated MW	89923

Anti-Ksp-Cadherin / CDH16 Antibody - Additional Information**Gene ID** 1014**Other Names**

Cadherin-16 (CDH16); Kidney-specific cadherin; Ksp-cadherin antibody

Application Note

IHC-P~N/A
IF~1:50~200
FC~1:10~50

Format

200ug/ml of Ab purified by Protein A. Prepared in 10mM PBS with 0.05% BSA & 0.05% azide. Also available WITHOUT BSA & azide at 1.0mg/ml.

Storage

Store at 2 to 8°C. Antibody is stable for 24 months.

Precautions

Anti-Ksp-Cadherin / CDH16 Antibody is for research use only and not for use in diagnostic or therapeutic procedures.

Anti-Ksp-Cadherin / CDH16 Antibody - Protein Information**Name** CDH16**Function**

Cadherins are calcium-dependent cell adhesion proteins. They preferentially interact with themselves in a homophilic manner in connecting cells; cadherins may thus contribute to the sorting of heterogeneous cell types.

Cellular Location

Cell membrane; Single-pass type I membrane protein

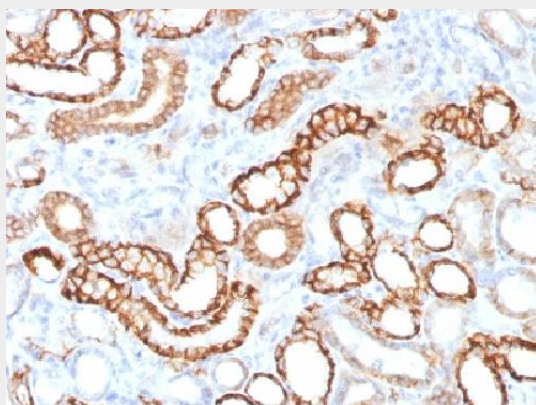
Tissue Location

Kidney specific.

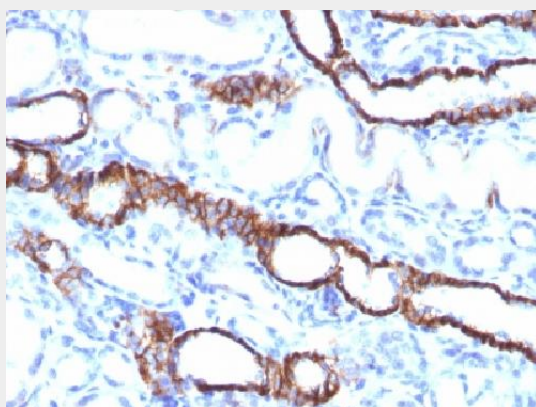
Anti-Ksp-Cadherin / CDH16 Antibody - Protocols

Provided below are standard protocols that you may find useful for product applications.

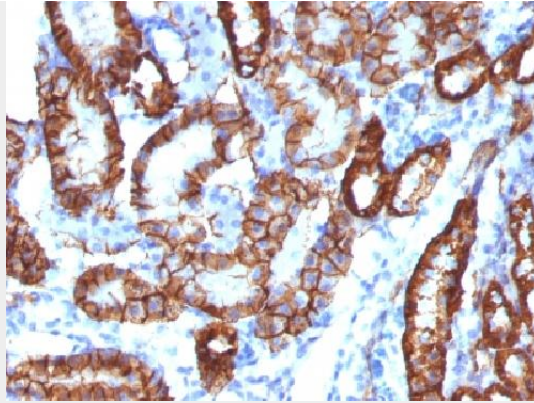
- [Western Blot](#)
- [Blocking Peptides](#)
- [Dot Blot](#)
- [Immunohistochemistry](#)
- [Immunofluorescence](#)
- [Immunoprecipitation](#)
- [Flow Cytometry](#)
- [Cell Culture](#)

Anti-Ksp-Cadherin / CDH16 Antibody - Images

Formalin-fixed, paraffin-embedded Human Renal Cell Carcinoma Stained with KSP-Cadherin Recombinant Rabbit Monoclonal Antibody (CDH16/1532R)



Formalin-fixed, paraffin-embedded Rat Kidney stained with KSP-Cadherin Recombinant Rabbit Monoclonal Antibody (CDH16/1532R)



Formalin-fixed, paraffin-embedded Mouse Kidney Stained with KSP-Cadherin Rabbit Monoclonal Antibody (CDH16/1532R)

Anti-Ksp-Cadherin / CDH16 Antibody - Background

This MAb recognizes a protein of 130kDa, identified as Ksp-cadherin. Cadherins form a superfamily of related glycoproteins that mediate calcium-dependent cell adhesion and transmit signals from the extracellular matrix to the cytoplasm. Cadherins have been implicated in embryogenesis, tissue morphogenesis, tissue structure maintenance, cell polarization, neoplastic invasiveness and metastasis, and membrane transport. It is suggested that Ksp-cadherin is a marker for terminal differentiation of the basolateral membranes of renal tubular epithelial cells. Within the kidney, Ksp-Cadherin is found exclusively in the basolateral membrane of renal tubular epithelial cells and collecting duct cells, and not in glomeruli, renal interstitial cells, or blood vessels. Ksp-Cadherin has been suggested to distinguish Chromophobe Renal-Cell Carcinoma from Oncocytoma.