

**Anti-Clathrin, Light Chain Antibody**  
**Mouse Monoclonal Antibody**  
**Catalog # AH13117****Specification**

---

**Anti-Clathrin, Light Chain Antibody - Product Information**

Application	WB, IHC-P, IF, FC
Primary Accession	<a href="#">P09496</a>
Other Accession	<a href="#">484241</a> , <a href="#">522114</a> , <a href="#">1212</a> , <a href="#">P09497</a>
Reactivity	Human
Host	Mouse
Clonality	Monoclonal
Isotype	Mouse / IgG2b, kappa
Calculated MW	27077

**Anti-Clathrin, Light Chain Antibody - Additional Information****Gene ID** 1211**Other Names**

Clathrin light chain A; Clathrin light chain B; Clathrin light chain LCA; Clathrin light chain LCB; Clathrin light polypeptide A; Clathrin light polypeptide B; Clathrin, light polypeptide (Lca); Clathrin, light polypeptide (Lcb); CLTA; CLTB

**Application Note**

WB~~1:1000  
IHC-P~~N/A  
IF~~1:50~200  
FC~~1:10~50

**Format**

200ug/ml of Ab purified from Bioreactor Concentrate by Protein A/G. Prepared in 10mM PBS with 0.05% BSA & 0.05% azide. Also available WITHOUT BSA & azide at 1.0mg/ml.

**Storage**

Store at 2 to 8°C. Antibody is stable for 24 months.

**Precautions**

Anti-Clathrin, Light Chain Antibody is for research use only and not for use in diagnostic or therapeutic procedures.

**Anti-Clathrin, Light Chain Antibody - Protein Information****Name** CLTA**Function**

Clathrin is the major protein of the polyhedral coat of coated pits and vesicles. Acts as a component of the TACC3/ch- TOG/clathrin complex proposed to contribute to stabilization of kinetochore fibers of the mitotic spindle by acting as inter- microtubule bridge (PubMed:<a

href="http://www.uniprot.org/citations/15858577" target="\_blank">15858577</a>, PubMed:<a href="http://www.uniprot.org/citations/21297582" target="\_blank">21297582</a>).

#### Cellular Location

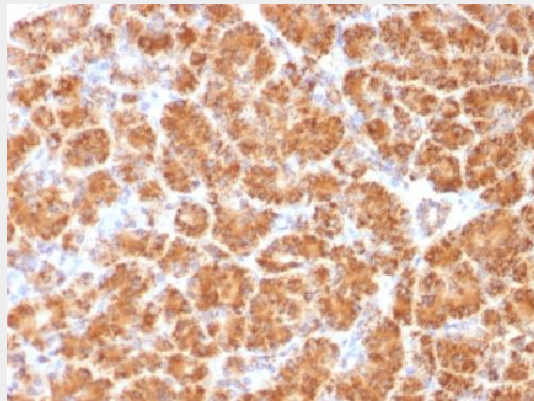
Cytoplasmic vesicle membrane; Peripheral membrane protein; Cytoplasmic side. Membrane, coated pit; Peripheral membrane protein; Cytoplasmic side. Cytoplasm, cytoskeleton, spindle Note=Cytoplasmic face of coated pits and vesicles. In complex with TACC3 and CKAP5 (forming the TACC3/ch-TOG/clathrin complex) localized to inter-microtubule bridges in mitotic spindles.

#### Anti-Clathrin, Light Chain Antibody - Protocols

Provided below are standard protocols that you may find useful for product applications.

- [Western Blot](#)
- [Blocking Peptides](#)
- [Dot Blot](#)
- [Immunohistochemistry](#)
- [Immunofluorescence](#)
- [Immunoprecipitation](#)
- [Flow Cytometry](#)
- [Cell Culture](#)

#### Anti-Clathrin, Light Chain Antibody - Images



Formalin-fixed, paraffin-embedded Human Pancreas stained with Clathrin, LC Monoclonal Antibody (CLC/1421).

#### Anti-Clathrin, Light Chain Antibody - Background

Recognizes proteins of 31-44kDa, which are identified as Clathrin Light Chains (both A & B). Clathrin is composed of three heavy chains and three light chains, which associate non-covalently to form a triskelion structure. Clathrin light chain regulates the self-assembly of triskelions onto intracellular membranes. Clathrin light chain subunits (LCA and LCB) contribute to regulation of coated vesicle formation to sort proteins during receptor-mediated endocytosis and organelle biogenesis. LCA and LCB are encoded by two discrete genes. They share only 60% homology, and have certain features in common. Both LCA and LCB undergo alternative mRNA splicing, which results in the generation of tissue-specific isoforms.