

Anti-Clathrin, Light Chain Antibody
Mouse Monoclonal Antibody
Catalog # AH13119**Specification**

Anti-Clathrin, Light Chain Antibody - Product Information

Application	WB, IHC-P, IF, FC
Primary Accession	P09496
Other Accession	484241 , 522114 , 1212 , P09497
Reactivity	Human
Host	Mouse
Clonality	Monoclonal
Isotype	Mouse / IgG2b, kappa
Calculated MW	27077

Anti-Clathrin, Light Chain Antibody - Additional Information**Gene ID** 1211**Other Names**

Clathrin light chain A; Clathrin light chain B; Clathrin light chain LCA; Clathrin light chain LCB; Clathrin light polypeptide A; Clathrin light polypeptide B; Clathrin, light polypeptide (Lca); Clathrin, light polypeptide (Lcb); CLTA; CLTB

Application Note

WB~~1:1000<br \>IHC-P~~N/A<br \>IF~~1:50~200<br \>FC~~1:10~50

Format

200ug/ml of Ab purified from Bioreactor Concentrate by Protein A/G. Prepared in 10mM PBS with 0.05% BSA & 0.05% azide. Also available WITHOUT BSA & azide at 1.0mg/ml.

Storage

Store at 2 to 8°C. Antibody is stable for 24 months.

Precautions

Anti-Clathrin, Light Chain Antibody is for research use only and not for use in diagnostic or therapeutic procedures.

Anti-Clathrin, Light Chain Antibody - Protein Information**Name** CLTA**Function**

Clathrin is the major protein of the polyhedral coat of coated pits and vesicles. Acts as a component of the TACC3/ch- TOG/clathrin complex proposed to contribute to stabilization of kinetochore fibers of the mitotic spindle by acting as inter- microtubule bridge (PubMed:15858577, PubMed:21297582).

Cellular Location

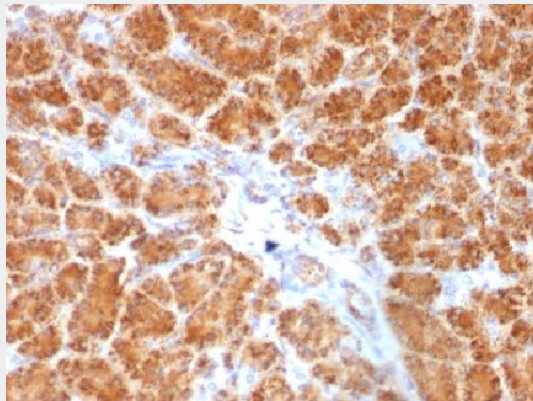
Cytoplasmic vesicle membrane; Peripheral membrane protein; Cytoplasmic side. Membrane, coated pit; Peripheral membrane protein; Cytoplasmic side. Cytoplasm, cytoskeleton, spindle Note=Cytoplasmic face of coated pits and vesicles. In complex with TACC3 and CKAP5 (forming the TACC3/ch-TOG/clathrin complex) localized to inter-microtubule bridges in mitotic spindles.

Anti-Clathrin, Light Chain Antibody - Protocols

Provided below are standard protocols that you may find useful for product applications.

- [Western Blot](#)
- [Blocking Peptides](#)
- [Dot Blot](#)
- [Immunohistochemistry](#)
- [Immunofluorescence](#)
- [Immunoprecipitation](#)
- [Flow Cytometry](#)
- [Cell Culture](#)

Anti-Clathrin, Light Chain Antibody - Images



Formalin-fixed, paraffin-embedded Human Pancreas stained with Clathrin, LC Monoclonal Antibody (SPM174).

Anti-Clathrin, Light Chain Antibody - Background

Recognizes proteins of 31-44kDa, which are identified as Clathrin Light Chains (both A & B). Clathrin is composed of three heavy chains and three light chains, which associate non-covalently to form a triskelion structure. Clathrin light chain regulates the self-assembly of triskelions onto intracellular membranes. Clathrin light chain subunits (LCA and LCB) contribute to regulation of coated vesicle formation to sort proteins during receptor-mediated endocytosis and organelle biogenesis. LCA and LCB are encoded by two discrete genes. They share only 60% homology, and have certain features in common. Both LCA and LCB undergo alternative mRNA splicing, which results in the generation of tissue-specific isoforms.