

Anti-ETS1 / Antibody
Mouse Monoclonal Antibody
Catalog # AH13204**Specification**

Anti-ETS1 / Antibody - Product Information

Application	WB, IHC-P, IF, FC
Primary Accession	P14921
Other Accession	369438
Reactivity	Human
Host	Mouse
Clonality	Monoclonal
Isotype	Mouse / IgG
Calculated MW	50408

Anti-ETS1 / Antibody - Additional Information**Gene ID** 2113**Other Names**

Avian erythroblastosis virus E26 (v ets) oncogene homolog 1; ETS1; EWSR2; p54; v-ets erythroblastosis virus E26 oncogene homolog 1

Application Note

WB~~1:1000<br \>IHC-P~~N/A<br \>IF~~1:50~200<br \>FC~~1:10~50

Format

200ug/ml of Ab purified from Bioreactor Concentrate by Protein A/G. Prepared in 10mM PBS with 0.05% BSA & 0.05% azide. Also available WITHOUT BSA & azide at 1.0mg/ml.

Storage

Store at 2 to 8°C. Antibody is stable for 24 months.

Precautions

Anti-ETS1 / Antibody is for research use only and not for use in diagnostic or therapeutic procedures.

Anti-ETS1 / Antibody - Protein Information**Name** ETS1**Synonyms** EWSR2**Function**

Transcription factor (PubMed: 10698492, PubMed: <a href="http://www.uniprot.org/citations/11909962"

target="_blank">11909962). Directly controls the expression of cytokine and chemokine genes in a wide variety of different cellular contexts (PubMed:20378371). May control the differentiation, survival and proliferation of lymphoid cells (PubMed:20378371). May also regulate angiogenesis through regulation of expression of genes controlling endothelial cell migration and invasion (PubMed:15247905, PubMed:15592518).

Cellular Location

Nucleus. Cytoplasm Note=Delocalizes from nucleus to cytoplasm when coexpressed with isoform Ets-1 p27.

Tissue Location

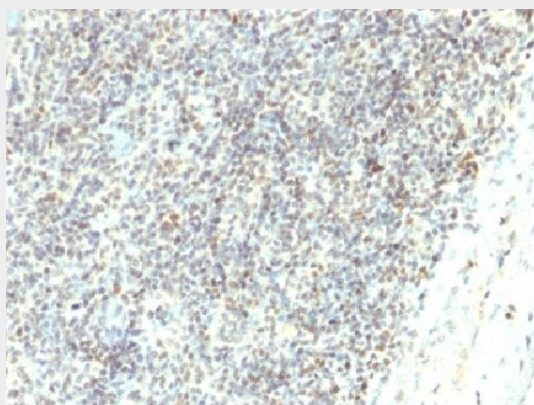
Highly expressed within lymphoid cells. Isoforms c- ETS-1A and Ets-1 p27 are both detected in all fetal tissues tested, but vary with tissue type in adult tissues. None is detected in brain or kidney.

Anti-ETS1 / Antibody - Protocols

Provided below are standard protocols that you may find useful for product applications.

- [Western Blot](#)
- [Blocking Peptides](#)
- [Dot Blot](#)
- [Immunohistochemistry](#)
- [Immunofluorescence](#)
- [Immunoprecipitation](#)
- [Flow Cytometry](#)
- [Cell Culture](#)

Anti-ETS1 / Antibody - Images



Formalin-fixed, paraffin-embedded human Spleen stained with ETS1 Monoclonal Antibody (ETS1/1282).

Anti-ETS1 / Antibody - Background

ETS1 proto-oncogene is an important transcription factor that plays a role in cell proliferation and differentiation. ETS1 is related to the growth of carcinoma cells by its regulation of the transcription of matrix metalloproteinases and urokinase-type plasminogen activator. The processes of tumor invasion and metastasis depend on the increased proteolytic activity of the invading tumor cells

that may involve matrix metalloproteinases, cathepsins B and D and plasminogen activator in the metastatic cascade. ETS1 is preferentially expressed in lymphoid cells, where it is essential for the maintenance of the normal pool of resting T and B cells. ETS1 expression level and distribution are differentially controlled in resting, activated and apoptotic lymphocytes.