

Anti-CELA3B / ELA3B Antibody
Mouse Monoclonal Antibody
Catalog # AH13237**Specification**

Anti-CELA3B / ELA3B Antibody - Product Information

Application	,14,3,4,10,
Primary Accession	P08861
Other Accession	728752
Reactivity	Human, Mouse, Rat
Host	Mouse
Clonality	Monoclonal
Isotype	Mouse / IgG1
Calculated MW	29263

Anti-CELA3B / ELA3B Antibody - Additional Information**Gene ID** 23436**Other Names**

Chymotrypsin like elastase family member 3B (CELA3B); ELA3B; Elastase IIIB; Protease E

Format

200ug/ml of Ab purified from Bioreactor Concentrate by Protein A/G. Prepared in 10mM PBS with 0.05% BSA & 0.05% azide. Also available WITHOUT BSA & azide at 1.0mg/ml.

Storage

Store at 2 to 8°C. Antibody is stable for 24 months.

Precautions

Anti-CELA3B / ELA3B Antibody is for research use only and not for use in diagnostic or therapeutic procedures.

Anti-CELA3B / ELA3B Antibody - Protein Information**Name** CELA3B**Synonyms** ELA3B**Function**

Efficient protease with alanine specificity but only little elastolytic activity.

Tissue Location

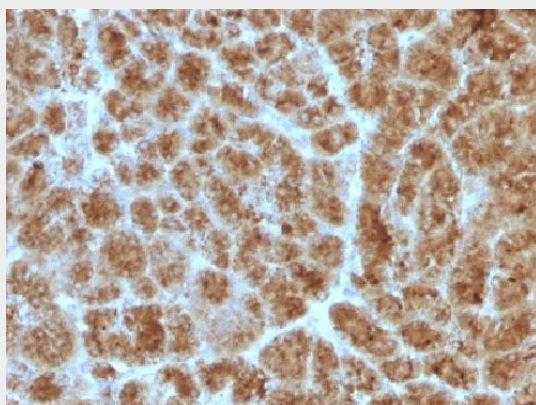
Pancreas. Not detectable in keratinocytes.

Anti-CELA3B / ELA3B Antibody - Protocols

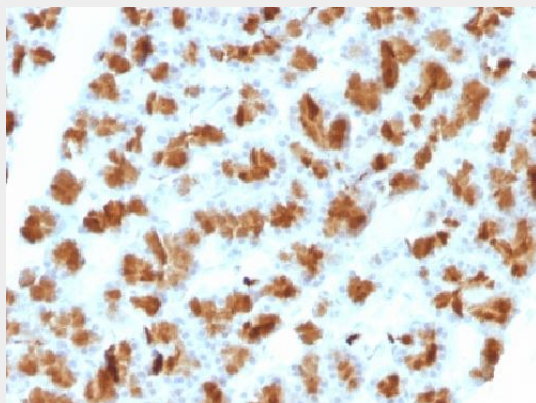
Provided below are standard protocols that you may find useful for product applications.

- [Western Blot](#)
- [Blocking Peptides](#)
- [Dot Blot](#)
- [Immunohistochemistry](#)
- [Immunofluorescence](#)
- [Immunoprecipitation](#)
- [Flow Cytometry](#)
- [Cell Culture](#)

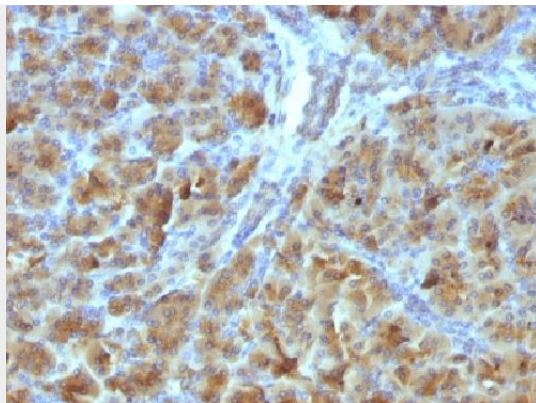
Anti-CELA3B / ELA3B Antibody - Images



Formalin-fixed, paraffin-embedded Human Pancreas stained with CELA3B Monoclonal Antibody (CELA3B/1257)



Formalin-fixed, paraffin-embedded Rat Pancreas stained with CELA3B Monoclonal Antibody (CELA3B/1257).



Formalin-fixed, paraffin-embedded Mouse Pancreas stained with CELA3B Monoclonal Antibody (CELA3B/1257).

Anti-CELA3B / ELA3B Antibody - Background

This MAb recognizes a protein of ~30kDa, identified as CELA3B (Chymotrypsin like elastase family member 3B). Elastases form a subfamily of serine proteases that hydrolyze many proteins in addition to elastin. Humans have six elastase genes which encode the structurally similar proteins elastase 1, 2, 2A, 2B, 3A, and 3B. Unlike other elastases, elastase 3B has little elastolytic activity. Like most of the human elastases, elastase 3B is secreted from the pancreas as a zymogen and, like other serine proteases such as trypsin, chymotrypsin and kallikrein; it has a digestive function in the intestine. Elastase 3B preferentially cleaves proteins after alanine residues. Elastase 3B may also function in the intestinal transport and metabolism of cholesterol. Both elastase 3A and elastase 3B have been referred to as protease E and as elastase 1, and excretion of this protein in fecal material is frequently used as a measure of pancreatic function in clinical assays.