

**Anti-Growth Hormone Antibody**  
**Mouse Monoclonal Antibody**  
**Catalog # AH13259****Specification**

---

**Anti-Growth Hormone Antibody - Product Information**

Application	IHC-P, IF, FC
Primary Accession	<a href="#">P01241</a>
Other Accession	<a href="#">655229</a>
Reactivity	Human
Host	Mouse
Clonality	Monoclonal
Isotype	Mouse / IgG2b
Calculated MW	24847

**Anti-Growth Hormone Antibody - Additional Information****Gene ID** 2688**Other Names**

GH; GH-N; GH1; GHN; Growth hormone 1; Growth hormone; Growth hormone, pituitary; HG1; hGH-N; IGHD1B; Pituitary growth hormone; RNGHGP; Somatotropin

**Application Note**

IHC-P~~N/A  
IF~~1:50~200  
FC~~1:10~50

**Format**

200ug/ml of Ab purified from Bioreactor Concentrate by Protein A/G. Prepared in 10mM PBS with 0.05% BSA &amp; 0.05% azide. Also available WITHOUT BSA &amp; azide at 1.0mg/ml.

**Storage**

Store at 2 to 8°C. Antibody is stable for 24 months.

**Precautions**

Anti-Growth Hormone Antibody is for research use only and not for use in diagnostic or therapeutic procedures.

**Anti-Growth Hormone Antibody - Protein Information****Name** GH1**Function**

Plays an important role in growth control. Its major role in stimulating body growth is to stimulate the liver and other tissues to secrete IGF1. It stimulates both the differentiation and proliferation of myoblasts. It also stimulates amino acid uptake and protein synthesis in muscle and other tissues.

**Cellular Location**

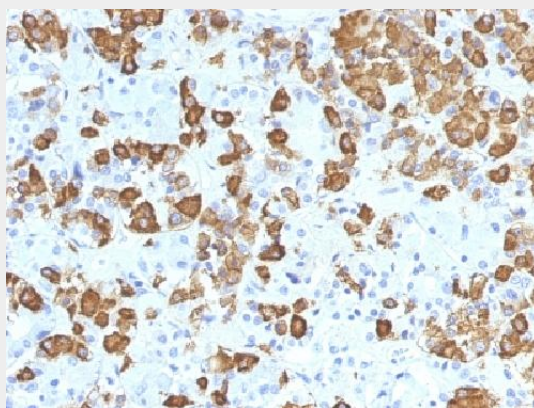
Secreted

### Anti-Growth Hormone Antibody - Protocols

Provided below are standard protocols that you may find useful for product applications.

- [Western Blot](#)
- [Blocking Peptides](#)
- [Dot Blot](#)
- [Immunohistochemistry](#)
- [Immunofluorescence](#)
- [Immunoprecipitation](#)
- [Flow Cytometry](#)
- [Cell Culture](#)

### Anti-Growth Hormone Antibody - Images



Formalin-fixed, paraffin-embedded Human Pituitary stained with Growth Hormone Monoclonal Antibody (GH/1371).

### Anti-Growth Hormone Antibody - Background

Pituitary growth hormone (GH) plays a crucial role in stimulating and controlling the growth, metabolism and differentiation of many mammalian cell types by modulating the synthesis of multiple mRNA species. These effects are mediated by the binding of GH to its membrane-bound receptor, GHR, and involve a phosphorylation cascade that results in the modulation of numerous signaling pathways. GH is synthesized by acidophilic or somatotrophic cells of the anterior pituitary gland. Anti-GH is a useful marker in classification of pituitary tumors and the study of pituitary disease (acromegaly).