

Anti-Glypican-3 (GPC3) (Hepatocellular Carcinoma Marker) Antibody
Recombinant Rabbit Monoclonal Antibody
Catalog # AH13271**Specification**

Anti-Glypican-3 (GPC3) (Hepatocellular Carcinoma Marker) Antibody - Product Information

Application	IHC-P, IF, FC
Primary Accession	P51654
Other Accession	644108
Reactivity	Human, Rat
Host	Rabbit
Clonality	Monoclonal
Isotype	Rabbit / IgG, kappa
Calculated MW	65563

Anti-Glypican-3 (GPC3) (Hepatocellular Carcinoma Marker) Antibody - Additional Information**Gene ID** 2719**Other Names**

DGSX; Glypican proteoglycan 3; GPC3; GTR2-2; Heparan sulphate proteoglycan; Intestinal protein OCI-5; MXR7; OCI-5; SDYS; Secreted glypican-3; SGBS1

Application Note

IHC-P ~ ~ N/A
IF ~ ~ 1:50 ~ 200
FC ~ ~ 1:10 ~ 50

Format

200ug/ml of Ab purified by Protein A. Prepared in 1mM PBS with 0.05% BSA & 0.05% azide. Also available WITHOUT BSA & azide at 1.0mg/ml.

Storage

Store at 2 to 8°C. Antibody is stable for 24 months.

Precautions

Anti-Glypican-3 (GPC3) (Hepatocellular Carcinoma Marker) Antibody is for research use only and not for use in diagnostic or therapeutic procedures.

Anti-Glypican-3 (GPC3) (Hepatocellular Carcinoma Marker) Antibody - Protein Information**Name** GPC3**Synonyms** OCI5**Function**

Cell surface proteoglycan (PubMed:14610063). Negatively regulates the hedgehog signaling pathway when attached via the GPI- anchor to the cell surface by competing with the hedgehog receptor PTC1 for binding to hedgehog proteins (By similarity). Binding to the hedgehog protein SHH triggers internalization of the complex by endocytosis and its subsequent lysosomal degradation (By similarity). Positively regulates the canonical Wnt signaling pathway by binding to the Wnt receptor Frizzled and stimulating the binding of the Frizzled receptor to Wnt ligands (PubMed:16227623, PubMed:24496449). Positively regulates the non-canonical Wnt signaling pathway (By similarity). Binds to CD81 which decreases the availability of free CD81 for binding to the transcriptional repressor HHEX, resulting in nuclear translocation of HHEX and transcriptional repression (By similarity). Inhibits the dipeptidyl peptidase activity of DPP4 (PubMed:17549790). Plays a role in limb patterning and skeletal development by controlling the cellular response to BMP4 (By similarity). Modulates the effects of growth factors BMP2, BMP7 and FGF7 on renal branching morphogenesis (By similarity). Required for coronary vascular development (By similarity). Plays a role in regulating cell movements during gastrulation (By similarity).

Cellular Location

Cell membrane; Lipid-anchor, GPI-anchor {ECO:0000250|UniProtKB:P13265}; Extracellular side {ECO:0000250|UniProtKB:P13265}

Tissue Location

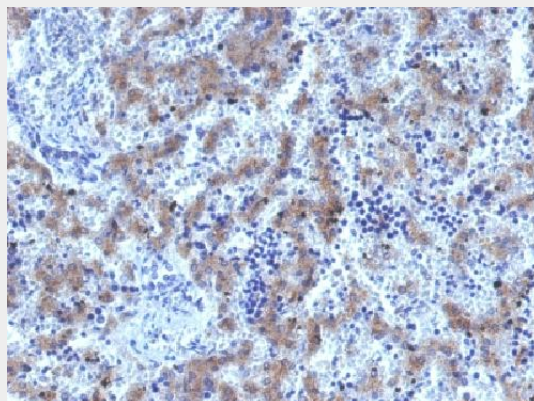
Detected in placenta (at protein level) (PubMed:32337544). Highly expressed in lung, liver and kidney

Anti-Glypican-3 (GPC3) (Hepatocellular Carcinoma Marker) Antibody - Protocols

Provided below are standard protocols that you may find useful for product applications.

- [Western Blot](#)
- [Blocking Peptides](#)
- [Dot Blot](#)
- [Immunohistochemistry](#)
- [Immunofluorescence](#)
- [Immunoprecipitation](#)
- [Flow Cytometry](#)
- [Cell Culture](#)

Anti-Glypican-3 (GPC3) (Hepatocellular Carcinoma Marker) Antibody - Images



Formalin-fixed, paraffin-embedded human Fetal Liver stained with Glypican-3 Recombinant Rabbit Monoclonal Antibody (GPC3/1534R)

Anti-Glypican-3 (GPC3) (Hepatocellular Carcinoma Marker) Antibody - Background

Glypican-3 (GPC3) is a glycosylphosphatidyl inositol-anchored membrane protein, which may also be found in a secreted form. Anti-GPC3 has been identified as a useful tumor marker for the diagnosis of hepatocellular carcinoma (HCC), hepatoblastoma, melanoma, testicular germ cell tumors, and Wilms tumor. In patients with HCC, GPC3 is overexpressed in neoplastic liver tissue and elevated in serum, but is undetectable in normal liver, benign liver, and the serum of healthy donors. GPC3 expression is also found to be higher in HCC liver tissue than in cirrhotic liver or liver with focal lesions such as dysplastic nodules and areas of hepatic adenoma (HA) with malignant transformation. In the context of testicular germ cell tumors, GPC3 expression is up regulated in certain histologic subtypes, specifically yolk sac tumors and choriocarcinoma. A high level of GPC3 expression is also found in some types of embryonal tumors, such as Wilms tumor and hepatoblastoma, with a low or undetectable expression in normal adjacent tissue. In patients with thyroid cancer, expression of GPC3 is dramatically enhanced in certain types of cancers: 100% in follicular carcinoma and 70% in papillary carcinoma. Expression of GPC3 in follicular carcinoma is significantly higher than that of follicular adenoma. In contrast, GPC3 is not expressed in anaplastic carcinoma.