

Anti-Galectin-13 (GAL13) / Placental Protein 13 (PP13) Antibody
Mouse Monoclonal Antibody
Catalog # AH13277**Specification****Anti-Galectin-13 (GAL13) / Placental Protein 13 (PP13) Antibody - Product Information**

Application	,1,14,3,4,
Primary Accession	O9UHV8
Other Accession	23671
Reactivity	Human
Host	Mouse
Clonality	Monoclonal
Isotype	Mouse / IgG2b, kappa
Calculated MW	16119

Anti-Galectin-13 (GAL13) / Placental Protein 13 (PP13) Antibody - Additional Information**Gene ID** 29124**Other Names**

Gal-13; GAL13; Galactoside-binding soluble lectin 13; Galectin-13; Galectin13; Lectin galactoside binding soluble 13; LGALS13; PLAC8; Placental protein 13 (PP13); Placental tissue protein 13

Format

200ug/ml of Ab purified from Bioreactor Concentrate by Protein A/G. Prepared in 1mM PBS with 0.05% BSA & 0.05% azide. Also available WITHOUT BSA & azide at 1.0mg/ml.

Storage

Store at 2 to 8°C. Antibody is stable for 24 months.

Precautions

Anti-Galectin-13 (GAL13) / Placental Protein 13 (PP13) Antibody is for research use only and not for use in diagnostic or therapeutic procedures.

Anti-Galectin-13 (GAL13) / Placental Protein 13 (PP13) Antibody - Protein Information**Name** LGALS13**Synonyms** PLAC8**Function**

Binds beta-galactoside and lactose. Strong inducer of T-cell apoptosis (PubMed:10527825, PubMed:19497882). Has hemagglutinating activity towards chicken erythrocytes (PubMed:29343868).

Cellular Location

Cytoplasm. Nucleus matrix

Tissue Location

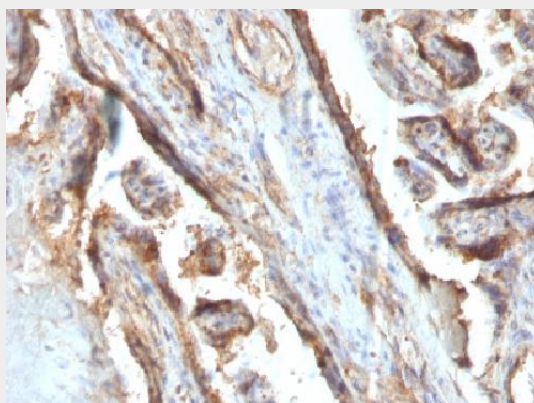
Detected in adult and fetal spleen, fetal kidney, adult urinary bladder and placenta. Placental expression originates predominantly from the syncytiotrophoblast

Anti-Galectin-13 (GAL13) / Placental Protein 13 (PP13) Antibody - Protocols

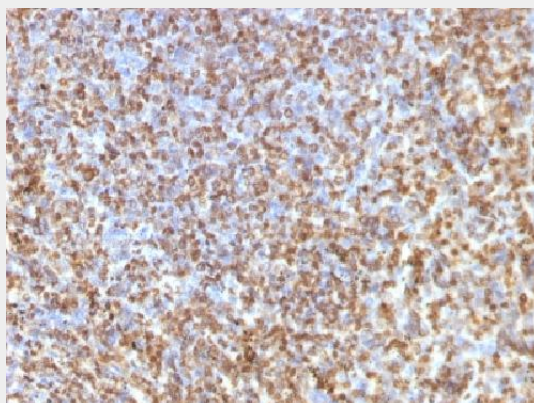
Provided below are standard protocols that you may find useful for product applications.

- [Western Blot](#)
- [Blocking Peptides](#)
- [Dot Blot](#)
- [Immunohistochemistry](#)
- [Immunofluorescence](#)
- [Immunoprecipitation](#)
- [Flow Cytometry](#)
- [Cell Culture](#)

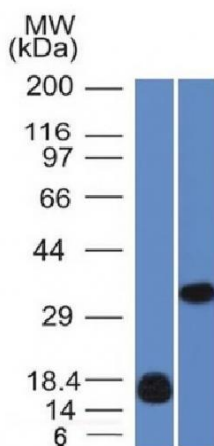
Anti-Galectin-13 (GAL13) / Placental Protein 13 (PP13) Antibody - Images



Formalin-paraffin human Placenta stained with Galectin-13 MAb (PP13/1161).



Formalin-paraffin human Spleen stained with Galectin-13MAb (PP13/1161).



Western Blot of (A) Recombinant human Galectin-13 fragment And (B) K562 Cell Lysate using Galectin-13 MAb (PP13/1161).

Anti-Galectin-13 (GAL13) / Placental Protein 13 (PP13) Antibody - Background

It recognizes a 32kDa protein, which is identified as homodimer of galectin-13 (also known as PP13). Galectins are a family of soluble β -galactoside-binding lectins that modulate cell-to-cell adhesion and cell-to-extracellular matrix (ECM) interactions and play a role in tumor progression, pre-mRNA splicing and apoptosis. One such member, galectin-13, is a 139 amino acid protein that contains one galectin domain. Possessing lysophospholipase activity, galectin-13 exists as a disulfide-linked homodimer. Galectin-13 is suggested to have a developmental role in the placenta and may display immunobiological activity in feto-maternal blood-spaces. Screening for galectin-13 in maternal serum during the first trimester of pregnancy may serve as a diagnostic marker to predict preterm pre-eclampsia.