

**Anti-Galectin-13 (GAL13) / Placental Protein 13 (PP13) Antibody**  
**Mouse Monoclonal Antibody**  
**Catalog # AH13279****Specification****Anti-Galectin-13 (GAL13) / Placental Protein 13 (PP13) Antibody - Product Information**

Application	,14,3,4,10,
Primary Accession	<a href="#">O9UHV8</a>
Other Accession	<a href="#">23671</a>
Reactivity	Human
Host	Mouse
Clonality	Monoclonal
Isotype	Mouse / IgG2b
Calculated MW	16119

**Anti-Galectin-13 (GAL13) / Placental Protein 13 (PP13) Antibody - Additional Information****Gene ID** 29124**Other Names**

Gal-13; GAL13; Galactoside-binding soluble lectin 13; Galectin-13; Galectin13; Lectin galactoside binding soluble 13; LGALS13; PLAC8; Placental protein 13 (PP13); Placental tissue protein 13

**Format**

200ug/ml of Ab purified from Bioreactor Concentrate by Protein A/G. Prepared in 1mM PBS with 0.05% BSA &amp; 0.05% azide. Also available WITHOUT BSA &amp; azide at 1.0mg/ml.

**Storage**

Store at 2 to 8°C. Antibody is stable for 24 months.

**Precautions**

Anti-Galectin-13 (GAL13) / Placental Protein 13 (PP13) Antibody is for research use only and not for use in diagnostic or therapeutic procedures.

**Anti-Galectin-13 (GAL13) / Placental Protein 13 (PP13) Antibody - Protein Information****Name** LGALS13**Synonyms** PLAC8**Function**

Binds beta-galactoside and lactose. Strong inducer of T-cell apoptosis (PubMed:&lt;a href="http://www.uniprot.org/citations/10527825" target="\_blank"&gt;10527825&lt;/a&gt;, PubMed:&lt;a href="http://www.uniprot.org/citations/19497882" target="\_blank"&gt;19497882&lt;/a&gt;). Has hemagglutinating activity towards chicken erythrocytes (PubMed:&lt;a href="http://www.uniprot.org/citations/29343868" target="\_blank"&gt;29343868&lt;/a&gt;).

**Cellular Location**

Cytoplasm. Nucleus matrix

#### **Tissue Location**

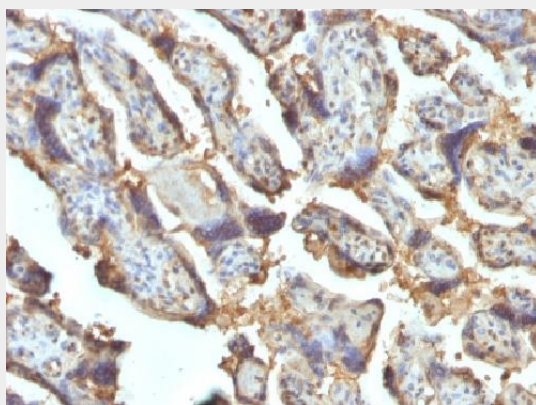
Detected in adult and fetal spleen, fetal kidney, adult urinary bladder and placenta. Placental expression originates predominantly from the syncytiotrophoblast

#### **Anti-Galectin-13 (GAL13) / Placental Protein 13 (PP13) Antibody - Protocols**

Provided below are standard protocols that you may find useful for product applications.

- [Western Blot](#)
- [Blocking Peptides](#)
- [Dot Blot](#)
- [Immunohistochemistry](#)
- [Immunofluorescence](#)
- [Immunoprecipitation](#)
- [Flow Cytometry](#)
- [Cell Culture](#)

#### **Anti-Galectin-13 (GAL13) / Placental Protein 13 (PP13) Antibody - Images**



Formalin-fixed, paraffin-embedded human Placenta stained with Galectin-13 / PP13 Monoclonal Antibody (PP13/1162).

#### **Anti-Galectin-13 (GAL13) / Placental Protein 13 (PP13) Antibody - Background**

It recognizes a 32kDa protein, which is identified as homodimer of galectin-13 (also known as PP13). Galectins are a family of soluble  $\beta$ -galactoside-binding lectins that modulate cell-to-cell adhesion and cell-to-extracellular matrix (ECM) interactions and play a role in tumor progression, pre-mRNA splicing and apoptosis. One such member, galectin-13, is a 139 amino acid protein that contains one galectin domain. Possessing lysophospholipase activity, galectin-13 exists as a disulfide-linked homodimer. Galectin-13 is suggested to have a developmental role in the placenta and may display immunobiological activity in feto-maternal blood-spaces. Screening for galectin-13 in maternal serum during the first trimester of pregnancy may serve as a diagnostic marker to predict preterm pre-eclampsia.