

Anti-Cytokeratin 15 (KRT15) (Basal Cell Marker) Antibody
Mouse Monoclonal Antibody
Catalog # AH13359**Specification**

Anti-Cytokeratin 15 (KRT15) (Basal Cell Marker) Antibody - Product Information

Application	WB, IHC-P, IHC-F, IF, FC
Primary Accession	P19012
Other Accession	654570
Reactivity	Human, Rat
Host	Mouse
Clonality	Monoclonal
Isotype	Mouse / IgG2a, kappa
Calculated MW	49212

Anti-Cytokeratin 15 (KRT15) (Basal Cell Marker) Antibody - Additional Information**Gene ID** 3866**Other Names**

CK15; Cytokeratin 15; K1CO; Ka15; Keratin 15 basic; Keratin 15 beta; Keratin complex 1 acidic gene 15; Keratin type I cytoskeletal 15; KRT15; KRTB; KRTL15; Type I cytoskeletal 15; Type I keratin Ka15

Application Note

WB~~1:1000
IHC-P~~N/A
IHC-F~~N/A
IF~~1:50~200
FC~~1:10~50

Format

200ug/ml of Ab purified from Bioreactor Concentrate by Protein A/G. Prepared in 10mM PBS with 0.05% BSA & 0.05% azide. Also available WITHOUT BSA & azide at 1.0mg/ml.

Storage

Store at 2 to 8°C. Antibody is stable for 24 months.

Precautions

Anti-Cytokeratin 15 (KRT15) (Basal Cell Marker) Antibody is for research use only and not for use in diagnostic or therapeutic procedures.

Anti-Cytokeratin 15 (KRT15) (Basal Cell Marker) Antibody - Protein Information**Name** KRT15**Synonyms** KRTB**Tissue Location**

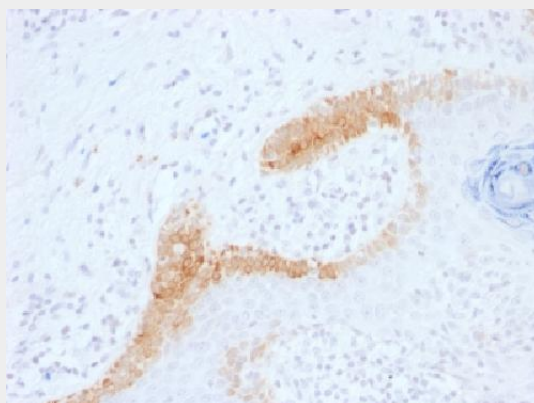
Expressed in a discontinuous manner in the basal cell layer of adult skin epidermis, but continuously in the basal layer of fetal skin epidermis and nail. Also expressed in the outer root sheath above the hair bulb in hair follicle (at protein level) Expressed homogeneously in all cell layers of the esophagus and exocervix, but detected in the basal cell layer only of oral mucosa, skin and in the basal plus the next two layers of the suprabasal epithelium of the palate.

Anti-Cytokeratin 15 (KRT15) (Basal Cell Marker) Antibody - Protocols

Provided below are standard protocols that you may find useful for product applications.

- [Western Blot](#)
- [Blocking Peptides](#)
- [Dot Blot](#)
- [Immunohistochemistry](#)
- [Immunofluorescence](#)
- [Immunoprecipitation](#)
- [Flow Cytometry](#)
- [Cell Culture](#)

Anti-Cytokeratin 15 (KRT15) (Basal Cell Marker) Antibody - Images



Formalin-fixed, paraffin-embedded human Basal Cell Carcinoma stained with Cytokeratin 15 Monoclonal Antibody (KRT15/1699).

Anti-Cytokeratin 15 (KRT15) (Basal Cell Marker) Antibody - Background

Keratins are a family of intermediate filament proteins that assemble into filaments through forming heterodimers of one type I keratin (keratins 9 to 23) and one type II keratin (keratins 1 to 8). Keratins demonstrate tissue and differentiation specific expression profiles. Keratin 15 is a type I keratin which is expressed only in basal keratinocytes in stratified epithelia and does not appear to have a natural type II expression partner. Keratin 15 is down regulated in activated keratinocytes. Cytokeratin 15 is a specific marker of stem cells of the hair-follicle bulge and may be a useful marker for diagnosis between basal cell carcinoma (BCC) and trichoepithelioma. Trichoblastoma are benign neoplasms of follicular differentiation frequently found in nevus sebaceous. Many morphologic features are shared with nodular basal cell carcinoma, sometimes rendering a diagnosis difficult. Trichoblastoma and BCC show variable expression of Cytokeratin 15 and Cytokeratin 19, and absence of hair keratins.