

Anti-Luteinizing Hormone / Choriogonadotropin Receptor (LHCGR) Antibody
Mouse Monoclonal Antibody
Catalog # AH13367**Specification****Anti-Luteinizing Hormone / Choriogonadotropin Receptor (LHCGR) Antibody - Product Information**

Application	IHC-P, IF, FC
Primary Accession	P22888
Other Accession	468490
Reactivity	Human
Host	Mouse
Clonality	Monoclonal
Isotype	Mouse / IgG1, kappa
Calculated MW	78643

Anti-Luteinizing Hormone / Choriogonadotropin Receptor (LHCGR) Antibody - Additional Information**Gene ID** 3973**Other Names**

Gonadotropin receptor; GTHR-II; HHG; LCGR; LGR2; LH-R; LH/CG-R; LH/CGR; LHCGR; LHR; LHRHR; LSH-R; Luteinizing hormone receptor; Luteinizing hormone/choriogonadotropin receptor; Lutropin choriogonadotropic receptor; Lutropin-choriogonadotropic hormone receptor; ULG5

Application Note

IHC-P~~N/A
IF~~1:50~200
FC~~1:10~50

Format

200ug/ml of Ab purified from Bioreactor Concentrate by Protein A/G. Prepared in 10mM PBS with 0.05% BSA & 0.05% azide. Also available WITHOUT BSA & azide at 1.0mg/ml.

Storage

Store at 2 to 8°C. Antibody is stable for 24 months.

Precautions

Anti-Luteinizing Hormone / Choriogonadotropin Receptor (LHCGR) Antibody is for research use only and not for use in diagnostic or therapeutic procedures.

Anti-Luteinizing Hormone / Choriogonadotropin Receptor (LHCGR) Antibody - Protein Information**Name** LHCGR**Synonyms** LCGR, LGR2, LHRHR

Function

Receptor for lutropin-choriogonadotropic hormone (PubMed:11847099). The activity of this receptor is mediated by G proteins which activate adenylate cyclase (PubMed:11847099).

Cellular Location

Cell membrane; Multi-pass membrane protein

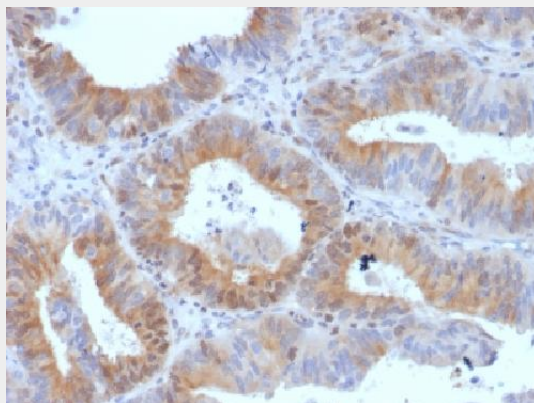
Tissue Location

Gonadal and thyroid cells.

Anti-Luteinizing Hormone / Choriogonadotropin Receptor (LHCGR) Antibody - Protocols

Provided below are standard protocols that you may find useful for product applications.

- [Western Blot](#)
- [Blocking Peptides](#)
- [Dot Blot](#)
- [Immunohistochemistry](#)
- [Immunofluorescence](#)
- [Immunoprecipitation](#)
- [Flow Cytometry](#)
- [Cell Culture](#)

Anti-Luteinizing Hormone / Choriogonadotropin Receptor (LHCGR) Antibody - Images

Formalin-fixed, paraffin-embedded Human Ovarian Carcinoma stained with LHCGR Monoclonal Antibody (LHCGR/1417).

Anti-Luteinizing Hormone / Choriogonadotropin Receptor (LHCGR) Antibody - Background

Recognizes a protein of 78-85kDa, which is identified as Luteinizing hormone / choriogonadotropin receptor. Luteinizing hormone plays a role in spermatogenesis and ovulation by stimulating the testes and ovaries to produce steroids. Choriogonadotropin production in the placenta maintains estrogen and progesterone levels during the first trimester of pregnancy. Ovaries and testes abundantly express luteinizing hormone / choriogonadotropin receptor (LHCGR) as a seven transmembrane, G protein-coupled receptor glycoprotein. LHCGR influences the protective effect of pregnancy and Gonadotropin against breast cancer. The expression of LHCGR on breast carcinoma correlates in part to the degree of tumor differentiation. LHCGR -positive breast tumors occur more frequently in tumors with greater cell differentiation in premenopausal women.