

Anti-Ep-CAM / CD326 (Extracellular Domain) Antibody
Mouse Monoclonal Antibody
Catalog # AH13373**Specification****Anti-Ep-CAM / CD326 (Extracellular Domain) Antibody - Product Information**

Application	IHC-P, IF, FC, E
Primary Accession	P16422
Other Accession	542050
Reactivity	Human
Host	Mouse
Clonality	Monoclonal
Isotype	Mouse / IgG
Calculated MW	34932

Anti-Ep-CAM / CD326 (Extracellular Domain) Antibody - Additional Information**Gene ID** 4072**Other Names**

Adenocarcinoma-associated Antigen; Cell Surface Glycoprotein Trop-1; EGP2; EGP314; EGP40; Epithelial Cell Adhesion Molecule; Epithelial Glycoprotein 314; ESA; KSA; TACD1; TROP1; Tumor-associated Calcium Signal Transducer 1 (TACSTD1); ECS-1; Epidermal Surface Antigen 1; ESA1; FLOT2; Flotillin-2; Membrane Component, Chromosome 17, Surface Marker-1 (M17S1); REG-1; Reggie-1; Reggie-2

Application Note

IHC-P~~N/A
IF~~1:50~200
FC~~1:10~50
E~~N/A

Format

200ug/ml of Ab purified from Bioreactor Concentrate by Protein A/G. Prepared in 10mM PBS with 0.05% BSA & 0.05% azide. Also available WITHOUT BSA & azide at 1.0mg/ml.

Storage

Store at 2 to 8°C. Antibody is stable for 24 months.

Precautions

Anti-Ep-CAM / CD326 (Extracellular Domain) Antibody is for research use only and not for use in diagnostic or therapeutic procedures.

Anti-Ep-CAM / CD326 (Extracellular Domain) Antibody - Protein Information**Name** EPCAM**Synonyms** GA733-2, M1S2, M4S1, MIC18, TACSTD1, TRO

Function

May act as a physical homophilic interaction molecule between intestinal epithelial cells (IECs) and intraepithelial lymphocytes (IELs) at the mucosal epithelium for providing immunological barrier as a first line of defense against mucosal infection. Plays a role in embryonic stem cells proliferation and differentiation. Up-regulates the expression of FABP5, MYC and cyclins A and E.

Cellular Location

Lateral cell membrane; Single-pass type I membrane protein. Cell junction, tight junction.

Note=Colocalizes with CLDN7 at the lateral cell membrane and tight junction

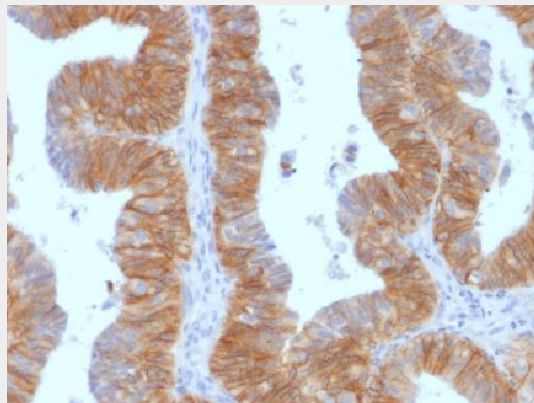
Tissue Location

Highly and selectively expressed by undifferentiated rather than differentiated embryonic stem cells (ESC) Levels rapidly diminish as soon as ESC's differentiate (at protein levels). Expressed in almost all epithelial cell membranes but not on mesodermal or neural cell membranes. Found on the surface of adenocarcinoma.

Anti-Ep-CAM / CD326 (Extracellular Domain) Antibody - Protocols

Provided below are standard protocols that you may find useful for product applications.

- [Western Blot](#)
- [Blocking Peptides](#)
- [Dot Blot](#)
- [Immunohistochemistry](#)
- [Immunofluorescence](#)
- [Immunoprecipitation](#)
- [Flow Cytometry](#)
- [Cell Culture](#)

Anti-Ep-CAM / CD326 (Extracellular Domain) Antibody - Images

Formalin-fixed, paraffin-embedded Human Ovarian Carcinoma stained with EpCAM Monoclonal Antibody (EGP40/1384).

Anti-Ep-CAM / CD326 (Extracellular Domain) Antibody - Background

EGP40 is a 40-43kDa transmembrane epithelial glycoprotein, also identified as epithelial specific antigen (ESA), or epithelial cellular adhesion molecule (Ep-CAM). It is expressed on baso-lateral cell surface in most simple epithelia and a vast majority of carcinomas. This antibody has been used to distinguish adenocarcinoma from pleural mesothelioma and hepatocellular carcinoma. This antibody is also useful in distinguishing serous carcinomas of the ovary from mesothelioma.