

**Anti-GCDFP-15 Antibody**  
**Mouse Monoclonal Antibody**  
**Catalog # AH13434****Specification**

---

**Anti-GCDFP-15 Antibody - Product Information**

Application	WB, IHC-P, IF, FC
Primary Accession	<a href="#">P12273</a>
Other Accession	<a href="#">99949</a>
Reactivity	Human
Host	Mouse
Clonality	Monoclonal
Isotype	Mouse / IgG2a, kappa
Calculated MW	16572

**Anti-GCDFP-15 Antibody - Additional Information****Gene ID** 5304**Other Names**

BRST-2; GCDP-15; gp17; GPI4; Gross cystic disease fluid protein 15; Prolactin-induced protein (PIP); Prolactin-inducible protein (PIP); Secretory actin-binding protein (SABP)

**Application Note**

<span class = "dilution\_WB">WB~~1:1000</span><br \><span class = "dilution\_IHC-P">IHC-P~~N/A</span><br \><span class = "dilution\_IF">IF~~1:50~200</span><br \><span class = "dilution\_FC">FC~~1:10~50</span>

**Format**

200ug/ml of Ab purified from Bioreactor Concentrate by Protein A/G. Prepared in 10mM PBS with 0.05% BSA &amp; 0.05% azide. Also available WITHOUT BSA &amp; azide at 1.0mg/ml.

**Storage**

Store at 2 to 8°C. Antibody is stable for 24 months.

**Precautions**

Anti-GCDFP-15 Antibody is for research use only and not for use in diagnostic or therapeutic procedures.

**Anti-GCDFP-15 Antibody - Protein Information****Name** PIP**Synonyms** GCDP15, GPI4**Cellular Location**

Secreted.

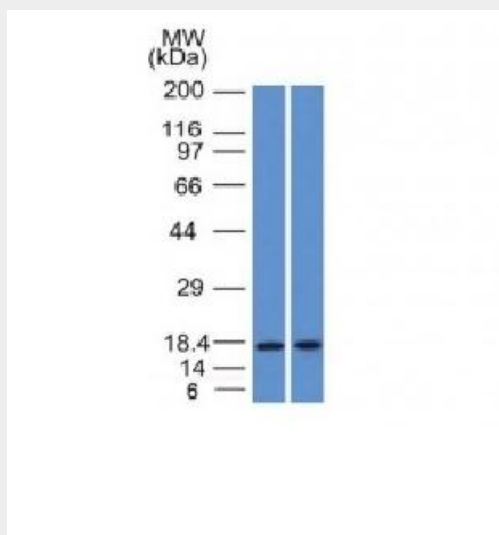
**Tissue Location**

Expressed in pathological conditions of the mammary gland and in several exocrine tissues, such as the lacrimal, salivary, and sweat glands

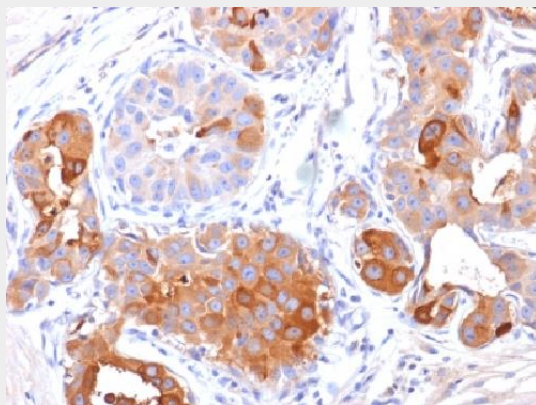
**Anti-GCDFP-15 Antibody - Protocols**

Provided below are standard protocols that you may find useful for product applications.

- [Western Blot](#)
- [Blocking Peptides](#)
- [Dot Blot](#)
- [Immunohistochemistry](#)
- [Immunofluorescence](#)
- [Immunoprecipitation](#)
- [Flow Cytometry](#)
- [Cell Culture](#)

**Anti-GCDFP-15 Antibody - Images**

Western Blot Analysis (A) Human Pancreas (B) HepG2 Cell lysate Using GCDFP-15 Monoclonal Antibody (PIP/1571).



Formalin-fixed, paraffin-embedded human Breast Carcinoma stained with GCDFP-15 Monoclonal Antibody (PIP/1571).

**Anti-GCDFP-15 Antibody - Background**

It recognizes a protein of 15kDa, identified as Gross cystic disease fluid protein 15 (GCDFP-15). It is a major protein component of benign breast gross cysts. It is a known marker of breast cancer, as it is found in approximately 50% of all breast cancer specimens. GCDFP-15, also known as PIP, for prolactin inducible protein, is a prolactin and androgen controlled protein. This antibody is useful in the identification of metastatic breast carcinoma, or fluid analysis.