

Anti-Prostate Specific Acid Phosphatase (PSAP) Antibody
Mouse Monoclonal Antibody
Catalog # AH13460**Specification****Anti-Prostate Specific Acid Phosphatase (PSAP) Antibody - Product Information**

Application	IHC-P, IF, FC
Primary Accession	P15309
Other Accession	433060
Reactivity	Human
Host	Mouse
Clonality	Monoclonal
Isotype	Mouse / IgG1, kappa
Calculated MW	44566

Anti-Prostate Specific Acid Phosphatase (PSAP) Antibody - Additional Information**Gene ID** 55**Other Names**

5'-nucleotidase (5'-NT); Acid phosphatase prostate; ACP3; Ecto-5'-nucleotidase; Prostatic acid phosphatase (PAP); Prostatic acid phosphatase; Thiamine monophosphatase (TMPase)

Application Note

IHC-P~N/A
IF~1:50~200
FC~1:10~50

Format

200ug/ml of Ab purified from Bioreactor Concentrate by Protein A/G. Prepared in 10mM PBS with 0.05% BSA & 0.05% azide. Also available WITHOUT BSA & azide at 1.0mg/ml.

Storage

Store at 2 to 8°C. Antibody is stable for 24 months.

Precautions

Anti-Prostate Specific Acid Phosphatase (PSAP) Antibody is for research use only and not for use in diagnostic or therapeutic procedures.

Anti-Prostate Specific Acid Phosphatase (PSAP) Antibody - Protein Information**Name** ACP3 ([HGNC:125](#))**Synonyms** ACPP**Function**A non-specific tyrosine phosphatase that dephosphorylates a diverse number of substrates under acidic conditions (pH 4-6) including alkyl, aryl, and acyl orthophosphate monoesters and phosphorylated proteins (PubMed:<http://www.uniprot.org/citations/10506173>)

target="_blank">10506173, PubMed:15280042, PubMed:20498373, PubMed:9584846). Has lipid phosphatase activity and inactivates lysophosphatidic acid in seminal plasma (PubMed:10506173, PubMed:15280042).

Cellular Location

[Isoform 1]: Secreted

Tissue Location

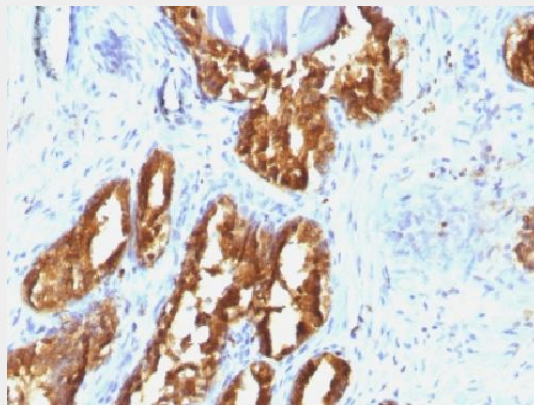
Highly expressed in the prostate, restricted to glandular and ductal epithelial cells. Also expressed in bladder, kidney, pancreas, lung, cervix, testis and ovary. Weak expression in a subset of pancreatic islet cells, squamous epithelia, the pilosebaceous unit, colonic neuroendocrine cells and skin adnexal structures. Low expression in prostate carcinoma cells and tissues

Anti-Prostate Specific Acid Phosphatase (PSAP) Antibody - Protocols

Provided below are standard protocols that you may find useful for product applications.

- [Western Blot](#)
- [Blocking Peptides](#)
- [Dot Blot](#)
- [Immunohistochemistry](#)
- [Immunofluorescence](#)
- [Immunoprecipitation](#)
- [Flow Cytometry](#)
- [Cell Culture](#)

Anti-Prostate Specific Acid Phosphatase (PSAP) Antibody - Images



Formalin-fixed, paraffin-embedded human Prostate Carcinoma stained with PSAP Monoclonal Antibody (ACPP/1338).

Anti-Prostate Specific Acid Phosphatase (PSAP) Antibody - Background

Recognizes a protein of 52kDa, identified as prostate specific acid phosphatase (PSAP). This enzyme catalyzes the conversion of orthophosphoric monoester to alcohol and orthophosphate. It is synthesized under androgen regulation and is secreted by the epithelial cells of the prostate gland. PSAP is found in non-neoplastic adult and fetal prostatic glands, primary and metastatic prostatic carcinomas. It shows no staining in granulocytes, osteoclasts, parietal cells of the stomach, liver

cells, renal cell or breast carcinomas.