

Anti-S100B Antibody
Mouse Monoclonal Antibody
Catalog # AH13499**Specification**

Anti-S100B Antibody - Product Information

Application	IF, FC
Primary Accession	P04271
Other Accession	422181
Reactivity	Human, Mouse, Rat
Host	Mouse
Clonality	Monoclonal
Isotype	Mouse / IgG2a, kappa
Calculated MW	10713

Anti-S100B Antibody - Additional Information**Gene ID** 6285**Other Names**

NEF; Protein S100-B; S-100 protein beta chain; S100 calcium binding protein beta (neural); S100 calcium-binding protein B; S100 protein beta chain; S100B; S100beta

Application Note

IF~~1:50~200
FC~~1:10~50

Format

Antibody purified from Bioreactor Concentrate by Protein A/G and conjugated to various reporter molecules. Prepared in 10mM PBS with 0.05% BSA and 0.05% azide. Contact us if you require this Ab in a different format.

Storage

Store at 2 to 8°C. Antibody is stable for 24 months.

Precautions

Anti-S100B Antibody is for research use only and not for use in diagnostic or therapeutic procedures.

Anti-S100B Antibody - Protein Information**Name** S100B {ECO:0000303|PubMed:6487634, ECO:0000312|HGNC:HGNC:10500}**Function**Small zinc- and- and calcium-binding protein that is highly expressed in astrocytes and constitutes one of the most abundant soluble proteins in brain (PubMed:[20950652](http://www.uniprot.org/citations/20950652), PubMed:[6487634](http://www.uniprot.org/citations/6487634)). Weakly binds

calcium but binds zinc very tightly-distinct binding sites with different affinities exist for both ions on each monomer (PubMed:20950652, PubMed:6487634). Physiological concentrations of potassium ion antagonize the binding of both divalent cations, especially affecting high-affinity calcium-binding sites (By similarity). Acts as a neurotrophic factor that promotes astrocytosis and axonal proliferation (By similarity). Involved in innervation of thermogenic adipose tissue by acting as an adipocyte-derived neurotrophic factor that promotes sympathetic innervation of adipose tissue (By similarity). Binds to and initiates the activation of STK38 by releasing autoinhibitory intramolecular interactions within the kinase (By similarity). Interaction with AGER after myocardial infarction may play a role in myocyte apoptosis by activating ERK1/2 and p53/TP53 signaling (By similarity). Could assist ATAD3A cytoplasmic processing, preventing aggregation and favoring mitochondrial localization (PubMed:20351179). May mediate calcium-dependent regulation on many physiological processes by interacting with other proteins, such as TPR-containing proteins, and modulating their activity (PubMed:22399290).

Cellular Location

Cytoplasm. Nucleus. Secreted {ECO:0000250|UniProtKB:P50114} Note=Secretion into the medium is promoted by interaction with isoform CLSTN3beta of CLSTN3. {ECO:0000250|UniProtKB:P50114}

Tissue Location

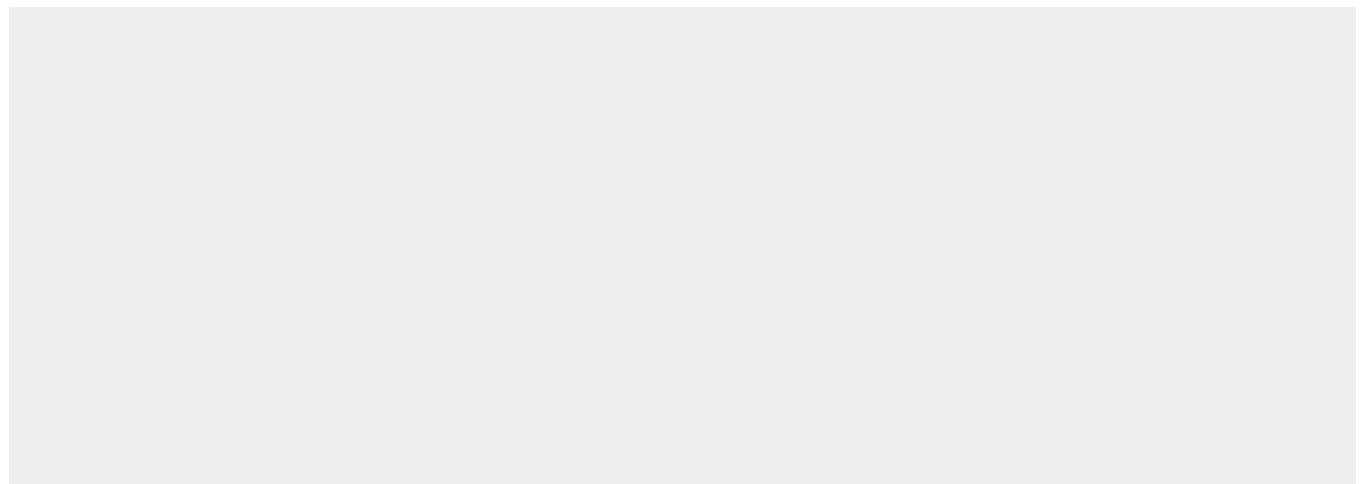
Although predominant among the water-soluble brain proteins, S100 is also found in a variety of other tissues

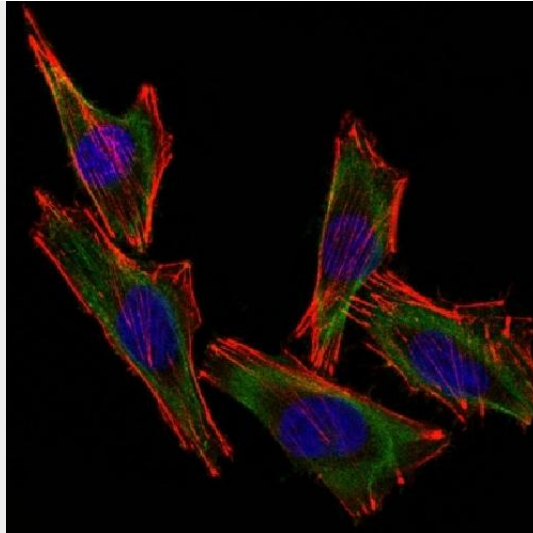
Anti-S100B Antibody - Protocols

Provided below are standard protocols that you may find useful for product applications.

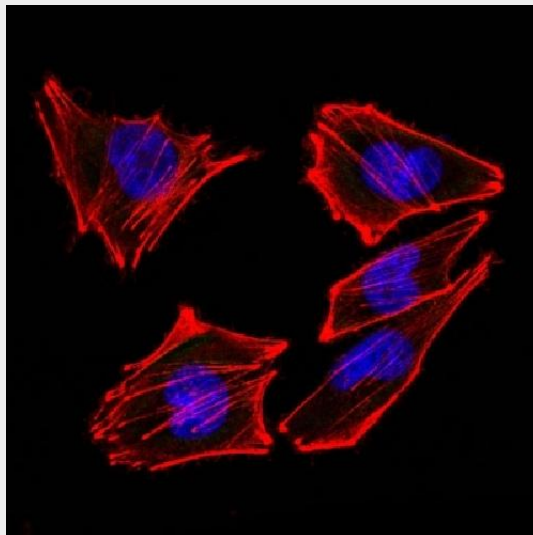
- [Western Blot](#)
- [Blocking Peptides](#)
- [Dot Blot](#)
- [Immunohistochemistry](#)
- [Immunofluorescence](#)
- [Immunoprecipitation](#)
- [Flow Cytometry](#)
- [Cell Culture](#)

Anti-S100B Antibody - Images





Confocal Immunofluorescent analysis of A2058 cells using AF488-labeled S100B Monoclonal Antibody (S100B/1012) (Green). F-actin filaments were labeled with Dylight 554 Phalloidin (red). DAPI was used to stain the cell nuclei (blue).



Confocal Immunofluorescent analysis of A2058 cells using AF488-labeled Isotype Control Monoclonal Antibody (IgG2a) (Green). F-actin filaments were labeled with Dylight 554 Phalloidin (red). DAPI was used to stain the cell nuclei (blue). (Negative Control)

Anti-S100B Antibody - Background

S100 belongs to the family of calcium binding proteins. S100A and S100B proteins are two members of the S100 family. S100A is composed of an alpha and a beta chain whereas S100B is composed of two beta chains. This antibody is specific against an epitope located on the beta-chain (i.e. in S-100A and S-100B) but not on the alpha-chain of S-100 (i.e. in S-100A and S100A0). This antibody can be used to localize S-100A and S-100B in various tissue sections. S-100 protein has been found in normal melanocytes, Langerhans cells, histiocytes, chondrocytes, lipocytes, skeletal and cardiac muscle, Schwann cells, epithelial and myoepithelial cells of the breast, salivary and sweat glands, as well as in glial cells. Neoplasms derived from these cells also express S-100 protein, albeit non-uniformly. A large number of well-differentiated tumors of the salivary gland, adipose and cartilaginous tissue, and Schwann cell-derived tumors express S-100 protein. Almost all malignant melanomas and cases of histiocytosis X are positive for S-100 protein.