

Anti-CD162 (Selectin P Ligand) Antibody
Mouse Monoclonal Antibody
Catalog # AH13508**Specification**

Anti-CD162 (Selectin P Ligand) Antibody - Product Information

| | |
|-------------------|------------------------|
| Application | IHC-P, IF, FC |
| Primary Accession | Q14242 |
| Other Accession | 591014 |
| Reactivity | Human |
| Host | Mouse |
| Clonality | Monoclonal |
| Isotype | Mouse / IgG1 |
| Calculated MW | 43201 |

Anti-CD162 (Selectin P Ligand) Antibody - Additional Information**Gene ID** 6404**Other Names**

CD162; CLA; Cutaneous lymphocyte associated antigen; P-selectin glycoprotein ligand 1; PSGL1; Selectin P ligand; SELPLG

Application Note

IHC-P~N/A
IF~1:50~200
FC~1:10~50

Format

200ug/ml of Ab purified from Bioreactor Concentrate by Protein A/G. Prepared in 10mM PBS with 0.05% BSA & 0.05% azide. Also available WITHOUT BSA & azide at 1.0mg/ml.

Storage

Store at 2 to 8°C. Antibody is stable for 24 months.

Precautions

Anti-CD162 (Selectin P Ligand) Antibody is for research use only and not for use in diagnostic or therapeutic procedures.

Anti-CD162 (Selectin P Ligand) Antibody - Protein Information**Name** SELPLG**Function**

A SLe(x)-type proteoglycan, which through high affinity, calcium-dependent interactions with E-, P- and L-selectins, mediates rapid rolling of leukocytes over vascular surfaces during the initial steps in inflammation. Critical for the initial leukocyte capture.

Cellular Location

Membrane; Single-pass type I membrane protein.

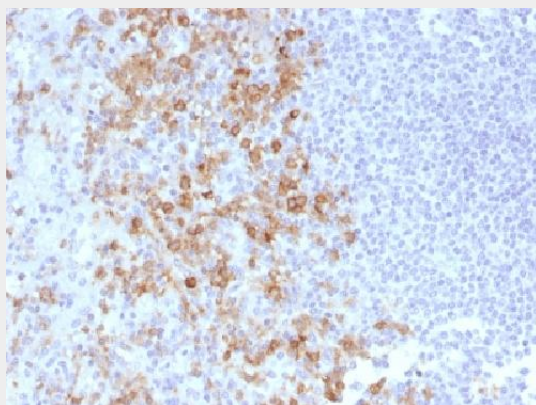
Tissue Location

Expressed on neutrophils, monocytes and most lymphocytes

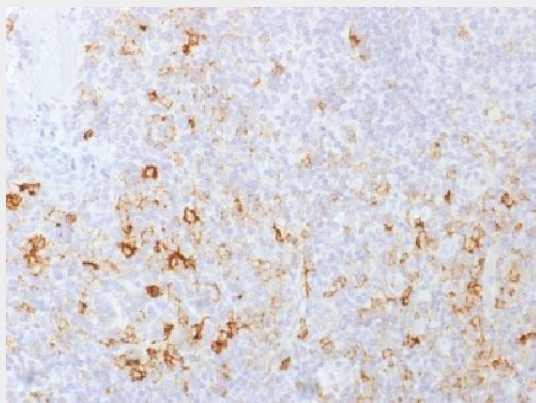
Anti-CD162 (Selectin P Ligand) Antibody - Protocols

Provided below are standard protocols that you may find useful for product applications.

- [Western Blot](#)
- [Blocking Peptides](#)
- [Dot Blot](#)
- [Immunohistochemistry](#)
- [Immunofluorescence](#)
- [Immunoprecipitation](#)
- [Flow Cytometry](#)
- [Cell Culture](#)

Anti-CD162 (Selectin P Ligand) Antibody - Images

Formalin-fixed, paraffin-embedded human Spleen stained with CD162 Monoclonal Antibody (PSGL1/1601).



Formalin-fixed, paraffin-embedded human Tonsil stained with CD162 Monoclonal Antibody (PSGL1/1601).

Anti-CD162 (Selectin P Ligand) Antibody - Background

CD162 glycoprotein functions as a high affinity counter-receptor for the cell adhesion molecules P-,

E- and L- selectin expressed on myeloid cells and stimulated T lymphocytes. As such, this protein plays a critical role in leukocyte trafficking during inflammation by tethering of leukocytes to activated platelets or endothelia expressing selectins. This protein requires two post-translational modifications, tyrosine sulfation and the addition of the sialyl Lewis x tetrasaccharide (sLex) to its O-linked glycans, for its high-affinity binding activity. Aberrant expression of this gene and polymorphisms in this gene are associated with defects in the innate and adaptive immune response.