

**Anti-TIMP2 (Tissue Inhibitor of Metalloproteinase 2) Antibody**  
**Mouse Monoclonal Antibody**  
**Catalog # AH13540****Specification**

---

**Anti-TIMP2 (Tissue Inhibitor of Metalloproteinase 2) Antibody - Product Information**

Application	WB, IHC-P, IF, FC
Primary Accession	<a href="#">P16035</a>
Other Accession	<a href="#">633514</a>
Reactivity	Human, Mouse, Rat, Rabbit, Zebrafish, Bovine
Host	Mouse
Clonality	Monoclonal
Isotype	Mouse / IgG2a, kappa
Calculated MW	24399

**Anti-TIMP2 (Tissue Inhibitor of Metalloproteinase 2) Antibody - Additional Information****Gene ID** 7077**Other Names**

Metalloproteinase inhibitor 2; TIMP metalloproteinase inhibitor 2; TIMP-2; TIMP2; Tissue Inhibitor of Metalloproteinase 2

**Application Note**

WB~~1:1000  
IHC-P~~N/A  
IF~~1:50~200  
FC~~1:10~50

**Format**

200ug/ml of Ab purified from Bioreactor Concentrate by Protein A/G. Prepared in 10mM PBS with 0.05% BSA &amp; 0.05% azide. Also available WITHOUT BSA &amp; azide at 1.0mg/ml.

**Storage**

Store at 2 to 8°C. Antibody is stable for 24 months.

**Precautions**

Anti-TIMP2 (Tissue Inhibitor of Metalloproteinase 2) Antibody is for research use only and not for use in diagnostic or therapeutic procedures.

**Anti-TIMP2 (Tissue Inhibitor of Metalloproteinase 2) Antibody - Protein Information****Name** TIMP2**Function**

Complexes with metalloproteinases (such as collagenases) and irreversibly inactivates them by binding to their catalytic zinc cofactor. Known to act on MMP-1, MMP-2, MMP-3, MMP-7, MMP-8, MMP-9, MMP-10, MMP-13, MMP-14, MMP-15, MMP-16 and MMP-19.

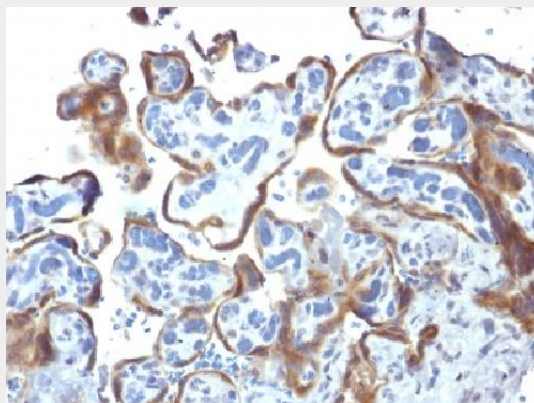
**Cellular Location**  
Secreted.

### **Anti-TIMP2 (Tissue Inhibitor of Metalloproteinase 2) Antibody - Protocols**

Provided below are standard protocols that you may find useful for product applications.

- [Western Blot](#)
- [Blocking Peptides](#)
- [Dot Blot](#)
- [Immunohistochemistry](#)
- [Immunofluorescence](#)
- [Immunoprecipitation](#)
- [Flow Cytometry](#)
- [Cell Culture](#)

### **Anti-TIMP2 (Tissue Inhibitor of Metalloproteinase 2) Antibody - Images**



Formalin-fixed, paraffin-embedded human Placenta stained with TIMP2 Monoclonal Antibody (3A4).

### **Anti-TIMP2 (Tissue Inhibitor of Metalloproteinase 2) Antibody - Background**

It recognizes a protein of 21kDa, identified as tissue inhibitor of metalloproteinases-2 (TIMP-2). It is closely related to TIMP-1 and shows the highest binding affinity to both the latent (pro) and active forms of 72kDa Type IV collagenase (also known as MMP-2 or gelatinase A). It also has affinity for the active form of 92kDa Type IV collagenase (also known as MMP-9 or gelatinase B). TIMP-2 inhibits the proteolytic invasiveness of tumor cells and normal placental trophoblast cells.