

**Anti-TSH-Receptor, B-Chain Antibody**  
**Mouse Monoclonal Antibody**  
**Catalog # AH13562****Specification**

---

**Anti-TSH-Receptor, B-Chain Antibody - Product Information**

|                   |                        |
|-------------------|------------------------|
| Application       | IHC-P, IF, FC          |
| Primary Accession | <a href="#">P16473</a> |
| Other Accession   | <a href="#">160411</a> |
| Reactivity        | Human                  |
| Host              | Mouse                  |
| Clonality         | Monoclonal             |
| Isotype           | Mouse / IgG2a          |
| Calculated MW     | 86844                  |

**Anti-TSH-Receptor, B-Chain Antibody - Additional Information****Gene ID** 7253**Other Names**

CHNG1; hTSHRI; LGR3; Thyroid-stimulating hormone receptor; Thyrotropin receptor; Thyrotropin receptor I; TSHR

**Application Note**

IHC-P~~N/A  
IF~~1:50~200  
FC~~1:10~50

**Format**

200ug/ml of Ab purified from Bioreactor Concentrate by Protein A/G. Prepared in 10mM PBS with 0.05% BSA &amp; 0.05% azide. Also available WITHOUT BSA &amp; azide at 1.0mg/ml.

**Storage**

Store at 2 to 8°C. Antibody is stable for 24 months.

**Precautions**

Anti-TSH-Receptor, B-Chain Antibody is for research use only and not for use in diagnostic or therapeutic procedures.

**Anti-TSH-Receptor, B-Chain Antibody - Protein Information****Name** TSHR**Synonyms** LGR3**Function**Receptor for the thyroid-stimulating hormone (TSH) or thyrotropin (PubMed:[11847099](http://www.uniprot.org/citations/11847099), PubMed:[12045258](http://www.uniprot.org/citations/12045258)). Also acts as

a receptor for the heterodimeric glycoprotein hormone (GPHA2:GPHB5) or thyrostimulin (PubMed:<a href="http://www.uniprot.org/citations/12045258" target="\_blank">12045258</a>). The activity of this receptor is mediated by G proteins which activate adenylate cyclase (PubMed:<a href="http://www.uniprot.org/citations/11847099" target="\_blank">11847099</a>). Plays a central role in controlling thyroid cell metabolism (By similarity).

#### **Cellular Location**

Cell membrane; Multi-pass membrane protein. Basolateral cell membrane; Multi-pass membrane protein

#### **Tissue Location**

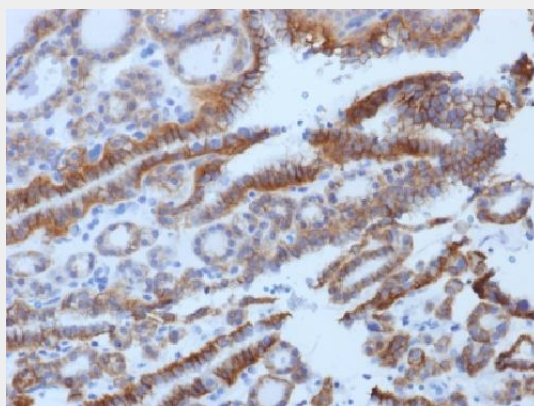
Expressed in thyroid cells (at protein level) (PubMed:11847099). Expressed in the thyroid (PubMed:2610690)

### **Anti-TSH-Receptor, B-Chain Antibody - Protocols**

Provided below are standard protocols that you may find useful for product applications.

- [Western Blot](#)
- [Blocking Peptides](#)
- [Dot Blot](#)
- [Immunohistochemistry](#)
- [Immunofluorescence](#)
- [Immunoprecipitation](#)
- [Flow Cytometry](#)
- [Cell Culture](#)

### **Anti-TSH-Receptor, B-Chain Antibody - Images**



Formalin-fixed, paraffin-embedded human Thyroid Carcinoma stained with TSHRB Monoclonal Antibody (SPM222).

### **Anti-TSH-Receptor, B-Chain Antibody - Background**

Thyroid-stimulating hormone (TSH, also known as thyrotropin) is a glycoprotein involved in the control of thyroid structure and metabolism, which stimulates the release of the thyroid hormones. TSH is regulated by thyroid hormone (T3) and various retinoid compounds. TSH binds to the thyroid-stimulating hormone receptor (TSHR), which is cleaved into two subunits, A and B, and plays a major role in regulating thyroid function. The third cytoplasmic loop of TSHR has been identified as critical for its role in regulating inositol phosphate and cAMP formation. In Grave's disease, an autoimmune disorder, TSHR is activated by autoantibodies, which may be stimulated by

the cleavage of the A and B subunits.