

Anti-von Willebrand Factor / Factor VIII Related-Ag Antibody
Mouse Monoclonal Antibody
Catalog # AH13572**Specification**

Anti-von Willebrand Factor / Factor VIII Related-Ag Antibody - Product Information

Application	WB, IHC-P, IF, FC, IP
Primary Accession	P04275
Other Accession	440848
Reactivity	Human
Host	Mouse
Clonality	Monoclonal
Isotype	Mouse / IgG1
Calculated MW	309265

Anti-von Willebrand Factor / Factor VIII Related-Ag Antibody - Additional Information**Gene ID** 7450**Other Names**

Coagulation Factor VIII, Factor VIII Related Antigen, F8VWF, von Willebrand Antigen 2, von Willebrand Disease (vWD)

Application Note

WB~~1:1000<br \>IHC-P~~N/A<br \>IF~~1:50~200<br \>FC~~1:10~50<br \>IP~~N/A

Format

200ug/ml of Ab purified from Bioreactor Concentrate by Protein A/G. Prepared in 10mM PBS with 0.05% BSA & 0.05% azide. Also available WITHOUT BSA & azide at 1.0mg/ml.

Storage

Store at 2 to 8°C. Antibody is stable for 24 months.

Precautions

Anti-von Willebrand Factor / Factor VIII Related-Ag Antibody is for research use only and not for use in diagnostic or therapeutic procedures.

Anti-von Willebrand Factor / Factor VIII Related-Ag Antibody - Protein Information**Name** VWF**Synonyms** F8VWF**Function**

Important in the maintenance of hemostasis, it promotes adhesion of platelets to the sites of

vascular injury by forming a molecular bridge between sub-endothelial collagen matrix and platelet- surface receptor complex GPIb-IX-V. Also acts as a chaperone for coagulation factor VIII, delivering it to the site of injury, stabilizing its heterodimeric structure and protecting it from premature clearance from plasma.

Cellular Location

Secreted. Secreted, extracellular space, extracellular matrix. Note=Localized to storage granules

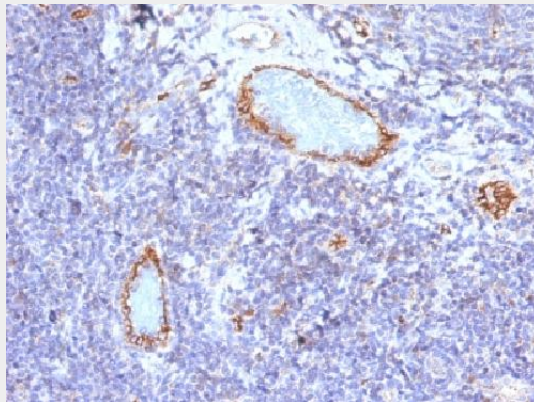
Tissue Location

Plasma.

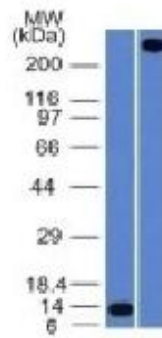
Anti-von Willebrand Factor / Factor VIII Related-Ag Antibody - Protocols

Provided below are standard protocols that you may find useful for product applications.

- [Western Blot](#)
- [Blocking Peptides](#)
- [Dot Blot](#)
- [Immunohistochemistry](#)
- [Immunofluorescence](#)
- [Immunoprecipitation](#)
- [Flow Cytometry](#)
- [Cell Culture](#)

Anti-von Willebrand Factor / Factor VIII Related-Ag Antibody - Images

Formalin-fixed, paraffin-embedded human Tonsil stained with vWF Monoclonal Antibody (VWF/1465)



Western Blot Analysis A) Recombinant Protein (B) human lung lysate Using Monoclonal Antibody MAb (VWF/1465)

Anti-von Willebrand Factor / Factor VIII Related-Ag Antibody - Background

von Willebrand Factor (vWF) is a multimeric glycoprotein that is found in endothelial cells, plasma and platelets. It acts as a carrier protein for Factor VIII and promotes platelet adhesion and aggregation. vWF undergoes a variety of posttranslational modifications that influence the affinity and availability for Factor VIII, including cleavage of the propeptide and formation of N-terminal disulfide bonds. This antibody helps to establish the endothelial nature of some lesions of disputed histogenesis, e.g. Kaposi s sarcoma and cardiac myxoma. It is widely used for differentiating vascular lesions from those of other tissue differentiation within a panel of other vascular markers although not all tumors of endothelial differentiation contain this antigen.