

Anti-ASRGL1 (Asparaginase Like 1) Antibody
Mouse Monoclonal Antibody
Catalog # AH13588**Specification**

Anti-ASRGL1 (Asparaginase Like 1) Antibody - Product Information

Application	WB, IHC-P, IF, FC
Primary Accession	Q7L266
Other Accession	535326
Reactivity	Human
Host	Mouse
Clonality	Monoclonal
Isotype	Mouse / IgG1
Calculated MW	32055

Anti-ASRGL1 (Asparaginase Like 1) Antibody - Additional Information**Gene ID** 80150**Other Names**

ALP1; ASGL1; Asparaginase like 1; ASRGL1; beta-aspartyl-peptidase; CRASH; isoaspartyl dipeptidase; isoaspartyl peptidase/L-asparaginase; L asparaginase; L asparagine amidohydrolase

Application Note

WB~~1:1000<br \>IHC-P~~N/A<br \>IF~~1:50~200<br \>FC~~1:10~50

Format

200ug/ml of Ab purified from Bioreactor Concentrate by Protein A/G. Prepared in 10mM PBS with 0.05% BSA & 0.05% azide. Also available WITHOUT BSA & azide at 1.0mg/ml.

Storage

Store at 2 to 8°C. Antibody is stable for 24 months.

Precautions

Anti-ASRGL1 (Asparaginase Like 1) Antibody is for research use only and not for use in diagnostic or therapeutic procedures.

Anti-ASRGL1 (Asparaginase Like 1) Antibody - Protein Information**Name** ASRGL1**Synonyms** ALP, CRASH**Function**

Has both L-asparaginase and beta-aspartyl peptidase activity. May be involved in the production of L-aspartate, which can act as an excitatory neurotransmitter in some brain regions. Is highly active

with L-Asp beta-methyl ester. Besides, has catalytic activity toward beta-aspartyl dipeptides and their methyl esters, including beta-L-Asp- L-Phe, beta-L-Asp-L-Phe methyl ester (aspartame), beta-L-Asp-L-Ala, beta-L-Asp-L-Leu and beta-L-Asp-L-Lys. Does not have aspartylglucosaminidase activity and is inactive toward GlcNAc-L-Asn. Likewise, has no activity toward glutamine.

Cellular Location

Cytoplasm. Note=Midpiece of sperm tail

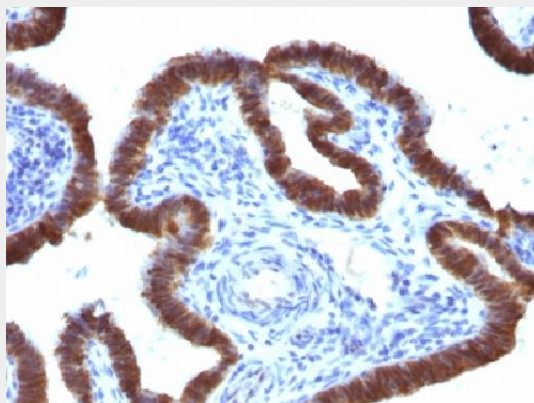
Tissue Location

Expressed in brain, kidney, testis and tissues of the gastrointestinal tract. Present in sperm (at protein level). Over- expressed in uterine, mammary, prostatic and ovarian carcinoma

Anti-ASRGL1 (Asparaginase Like 1) Antibody - Protocols

Provided below are standard protocols that you may find useful for product applications.

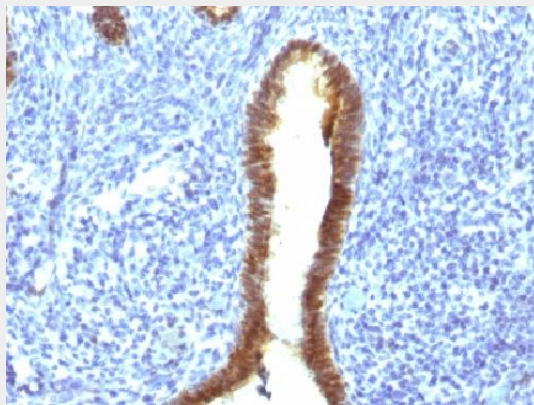
- [Western Blot](#)
- [Blocking Peptides](#)
- [Dot Blot](#)
- [Immunohistochemistry](#)
- [Immunofluorescence](#)
- [Immunoprecipitation](#)
- [Flow Cytometry](#)
- [Cell Culture](#)

Anti-ASRGL1 (Asparaginase Like 1) Antibody - Images

Formalin-fixed, paraffin-embedded human Fallopian Tube stained with ASRGL1 Monoclonal Antibody (CRASH/1289).



Formalin-fixed, paraffin-embedded human Endometrium stained with ASRGL1 Monoclonal Antibody (CRASH/1289).



Formalin-fixed, paraffin-embedded human Uterus stained with ASRGL1 Monoclonal Antibody (CRASH/1289).

Anti-ASRGL1 (Asparaginase Like 1) Antibody - Background

ASRGL1 (Asparaginase-like protein 1), also known as CRASH, is a 308 amino acid protein belonging to the Ntn-hydrolase family. Asparaginases utilize asparagine as a substrate to produce aspartic acid and ammonia. ASRGL1 has been identified as a autoantigenic protein that is present in the mid-piece of sperm after obstruction of the male reproductive tract. ASRGL1 is expressed highly in testis, but is also expressed in brain, kidney and gastrointestinal tissues. High levels of ASRGL1 have also been identified in ovarian, uterine and mammary tumors in comparison with normal tissues of the same origin.