

Anti-MAML2 Antibody
Mouse Monoclonal Antibody
Catalog # AH13592**Specification**

Anti-MAML2 Antibody - Product Information

Application	WB, IHC-P, IF, FC
Primary Accession	Q8IZL2
Other Accession	428214
Reactivity	Human
Host	Mouse
Clonality	Monoclonal
Isotype	Mouse / IgG2a
Calculated MW	125197

Anti-MAML2 Antibody - Additional Information**Gene ID** 84441**Other Names**

Mam-2; MAML2; Mastermind-like protein 2

Application Note

WB~~1:1000<br \>IHC-P~~N/A<br \>IF~~1:50~200<br \>FC~~1:10~50

Format

200ug/ml of Ab purified from Bioreactor Concentrate by Protein A/G. Prepared in 10mM PBS with 0.05% BSA & 0.05% azide. Also available WITHOUT BSA & azide at 1.0mg/ml.

Storage

Store at 2 to 8°C. Antibody is stable for 24 months.

Precautions

Anti-MAML2 Antibody is for research use only and not for use in diagnostic or therapeutic procedures.

Anti-MAML2 Antibody - Protein Information**Name** MAML2**Synonyms** KIAA1819**Function**

Acts as a transcriptional coactivator for NOTCH proteins. Has been shown to amplify NOTCH-induced transcription of HES1. Potentiates activation by NOTCH3 and NOTCH4 more efficiently than MAML1 or MAML3.

Cellular Location

Nucleus speckle. Note=Nuclear, in a punctate manner

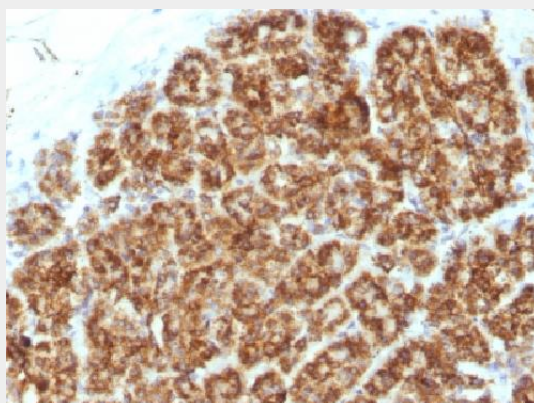
Tissue Location

Widely expressed with high levels detected in placenta, salivary gland and skeletal muscle

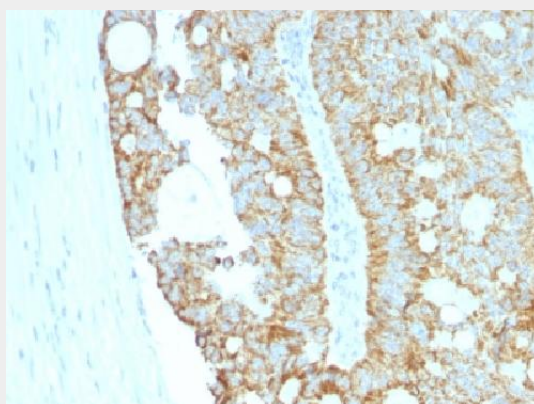
Anti-MAML2 Antibody - Protocols

Provided below are standard protocols that you may find useful for product applications.

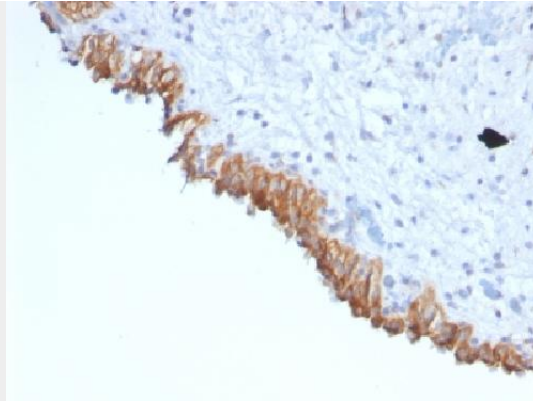
- [Western Blot](#)
- [Blocking Peptides](#)
- [Dot Blot](#)
- [Immunohistochemistry](#)
- [Immunofluorescence](#)
- [Immunoprecipitation](#)
- [Flow Cytometry](#)
- [Cell Culture](#)

Anti-MAML2 Antibody - Images

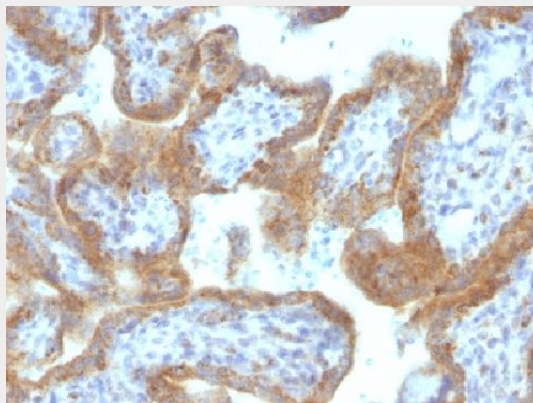
Formalin-fixed, paraffin-embedded Human Pancreas stained with MAML2 Monoclonal Antibody (MAML2/1302).



Formalin-fixed, paraffin-embedded Human Colon Carcinoma stained with MAML2 Monoclonal Antibody (MAML2/1302).



Formalin-fixed, paraffin-embedded Human Bladder Carcinoma stained with MAML2 Monoclonal Antibody (MAML2/1302).



Formalin-fixed, paraffin-embedded Human Placenta stained with MAML2 Monoclonal Antibody (MAML2/1302).

Anti-MAML2 Antibody - Background

MAML2 (mastermind-like protein 2), also known as MAM2, MAM3 or MLLMAML2, is a nuclear speckle protein that acts as a transcriptional co-activator for Notch receptors. The Notch signaling pathway influences cell fate by regulating the ability of precursor cells to properly respond to developmental signals. MAML2 is a member of the mastermind-like family of proteins that are human homologs of the *Drosophila melanogaster* mastermind protein. Through its N-terminal region, MAML2 interacts with the ankyrin repeats of the Notch proteins Notch 1, Notch 2, Notch 3 and Notch 4. This interaction leads to formation of a DNA-binding complex with the Notch proteins and RBP-Jk; a complex that can then induce HES1 gene expression. While the N-terminal domain of MAML2 is essential for proper Notch binding, the C-terminal domain of MAML2 is essential for transcriptional activation. A chromosomal aberration involving the gene encoding MAML2 is implicated in mucoepidermoid carcinomas, clear cell hidradenomas and benign Warthin tumors.