

**Anti-CD30 / TNFRSF8 Antibody**  
**Recombinant Mouse Monoclonal Antibody**  
**Catalog # AH13622****Specification**

---

**Anti-CD30 / TNFRSF8 Antibody - Product Information**

Application	IHC-P, IF, FC
Primary Accession	<a href="#">P28908</a>
Other Accession	<a href="#">1314</a>
Reactivity	Human
Host	Mouse
Clonality	Monoclonal
Isotype	Mouse / IgG1, kappa
Calculated MW	63747

**Anti-CD30 / TNFRSF8 Antibody - Additional Information****Gene ID** 943**Other Names**

CD30L receptor, Cytokine receptor CD30, Ki-1 antigen, Lymphocyte activation antigen CD30, Tumor necrosis factor receptor superfamily member 8 (TNFRSF8)

**Application Note**

IHC-P~N/A  
IF~1:50~200  
FC~1:10~50

**Format**

200ug/ml of recombinant MAb purified by Protein A/G. Prepared in 10mM PBS with 0.05% BSA &amp; 0.05% azide. Also available WITHOUT BSA &amp; azide at 1.0mg/ml.

**Storage**

Store at 2 to 8°C. Antibody is stable for 24 months.

**Precautions**

Anti-CD30 / TNFRSF8 Antibody is for research use only and not for use in diagnostic or therapeutic procedures.

**Anti-CD30 / TNFRSF8 Antibody - Protein Information****Name** TNFRSF8 ([HGNC:11923](#))**Function**

Receptor for TNFSF8/CD30L (PubMed: [8391931](http://www.uniprot.org/citations/8391931)). May play a role in the regulation of cellular growth and transformation of activated lymphoblasts. Regulates gene expression through activation of NF-kappa- B (PubMed: [8999898](http://www.uniprot.org/citations/8999898)).

**Cellular Location**

[Isoform 1]: Cell membrane; Single-pass type I membrane protein

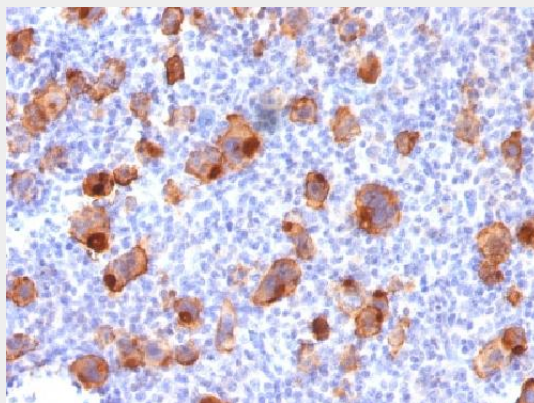
**Tissue Location**

[Isoform 2]: Detected in alveolar macrophages (at protein level).

**Anti-CD30 / TNFRSF8 Antibody - Protocols**

Provided below are standard protocols that you may find useful for product applications.

- [Western Blot](#)
- [Blocking Peptides](#)
- [Dot Blot](#)
- [Immunohistochemistry](#)
- [Immunofluorescence](#)
- [Immunoprecipitation](#)
- [Flow Cytometry](#)
- [Cell Culture](#)

**Anti-CD30 / TNFRSF8 Antibody - Images**

Formalin-fixed, paraffin-embedded human Hodgkin's Lymphoma stained with CD30 Recombinant Mouse Monoclonal Antibody (rKi-1/779).

**Anti-CD30 / TNFRSF8 Antibody - Background**

Recognizes a single chain glycoprotein of 105/120kDa, identified as CD30/Ki-1. CD30 is synthesized as a 90kDa precursor, which is processed in the Golgi complex into a membrane-bound phosphorylated mature 105/120kDa glycoprotein. In Hodgkin's disease, CD30/Ki-1 antigen is expressed by mononuclear-Hodgkin and multinucleated Reed-Sternberg cells. It is also expressed by the tumor cells of a majority of anaplastic large cell lymphomas as well as by a varying proportion of activated T and B cells. This MAb distinguishes large cell lymphomas derived from activated lymphoid cells from histiocytic malignancies and lymphomas derived from resting and precursor lymphoid cells or from anaplastic carcinomas. About one third of the Ki-1 positive lymphomas lack the leukocyte common antigen (CD45).