

Anti-CD34 Antibody
Recombinant Rabbit Monoclonal Antibody
Catalog # AH13630**Specification**

Anti-CD34 Antibody - Product Information

Application	WB, IHC-P, IF, FC
Primary Accession	P28906
Other Accession	374990
Reactivity	Human, Rat
Host	Rabbit
Clonality	Monoclonal
Isotype	Rabbit / IgG, kappa
Calculated MW	40716

Anti-CD34 Antibody - Additional Information**Gene ID** 947**Other Names**

Hematopoietic Progenitor Cell Antigen, HPCA1, Mucosialin

Application Note

WB~~1:1000
IHC-P~~N/A
IF~~1:50~200
FC~~1:10~50

Format

200ug/ml of recombinant MAb purified by Protein A/G. Prepared in 10mM PBS with 0.05% BSA & 0.05% azide. Also available WITHOUT BSA & azide at 1.0mg/ml.

Storage

Store at 2 to 8°C. Antibody is stable for 24 months.

Precautions

Anti-CD34 Antibody is for research use only and not for use in diagnostic or therapeutic procedures.

Anti-CD34 Antibody - Protein Information**Name** CD34**Function**

Possible adhesion molecule with a role in early hematopoiesis by mediating the attachment of stem cells to the bone marrow extracellular matrix or directly to stromal cells. Could act as a scaffold for the attachment of lineage specific glycans, allowing stem cells to bind to lectins expressed by stromal cells or other marrow components. Presents carbohydrate ligands to selectins.

Cellular Location

Membrane; Single-pass type I membrane protein.

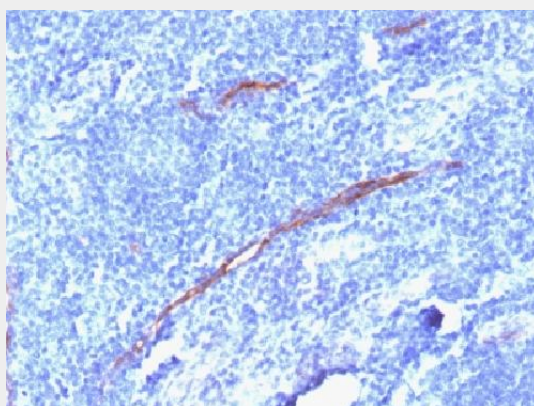
Tissue Location

Selectively expressed on hematopoietic progenitor cells and the small vessel endothelium of a variety of tissues

Anti-CD34 Antibody - Protocols

Provided below are standard protocols that you may find useful for product applications.

- [Western Blot](#)
- [Blocking Peptides](#)
- [Dot Blot](#)
- [Immunohistochemistry](#)
- [Immunofluorescence](#)
- [Immunoprecipitation](#)
- [Flow Cytometry](#)
- [Cell Culture](#)

Anti-CD34 Antibody - Images

Formalin-fixed, paraffin-embedded human Tonsil stained with CD34 Recombinant Rabbit Monoclonal Antibody (HPCA1/1806R)

Anti-CD34 Antibody - Background

This antibody recognizes a transmembrane, heavily glycosylated protein of 90-120kDa, which is identified as CD34. Its expression is a hallmark for identifying pluripotent hematopoietic stem or progenitor cells. Its expression is gradually lost as lineage committed progenitors differentiate. CD34 is a marker of choice for staining blasts in acute myeloid leukemia. In addition, it is expressed by soft tissue tumors, such as solitary fibrous tumor and gastrointestinal stromal tumor. CD34 expression is also found in vascular endothelium. Additionally, proliferating endothelial cells overexpress this molecule than the non-proliferating endothelial cells. Anti-CD34 labels > 85% of angiosarcoma and Kaposi's sarcoma, but shows low specificity.