

Anti-Cytokeratin 8/18 Antibody
Mouse Monoclonal Antibody
Catalog # AH13682**Specification**

Anti-Cytokeratin 8/18 Antibody - Product Information

Application	WB, IHC-P, IF, FC
Primary Accession	P05787
Other Accession	433845 (CK5) , 533782 , 708445 (CK8) , 3856 (CK8) , P05783 (CK18)
Reactivity	Human
Host	Mouse
Clonality	Monoclonal
Isotype	Mouse / IgG1, kappa
Calculated MW	53704

Anti-Cytokeratin 8/18 Antibody - Additional Information**Gene ID** 3856**Other Names**

CARD2; CK8; CYK8; CYKER; Cytokeratin Endo A; DreK8; EndoA; K2C8; K8; Keratin 8; Krt 2.8; KRT8; Type-II Keratin Kb8. Cell Proliferation-inducing Gene 46 Protein; CK18; CYK18 Cytokeratin Endo B; K18; Keratin-18; Kerd; KRT18

Application Note

WB~~1:1000<br \>IHC-P~~N/A<br \>IF~~1:50~200<br \>FC~~1:10~50

Format

200ug/ml of Ab purified from Bioreactor Concentrate by Protein A/G. Prepared in 10mM PBS with 0.05% BSA & 0.05% azide. Also available WITHOUT BSA & azide at 1.0mg/ml.

Storage

Store at 2 to 8°C. Antibody is stable for 24 months.

Precautions

Anti-Cytokeratin 8/18 Antibody is for research use only and not for use in diagnostic or therapeutic procedures.

Anti-Cytokeratin 8/18 Antibody - Protein Information**Name** KRT8**Synonyms** CYK8**Function**

Together with KRT19, helps to link the contractile apparatus to dystrophin at the costameres of striated muscle.

Cellular Location

Cytoplasm. Nucleus, nucleoplasm {ECO:0000250|UniProtKB:Q10758}. Nucleus matrix {ECO:0000250|UniProtKB:Q10758}

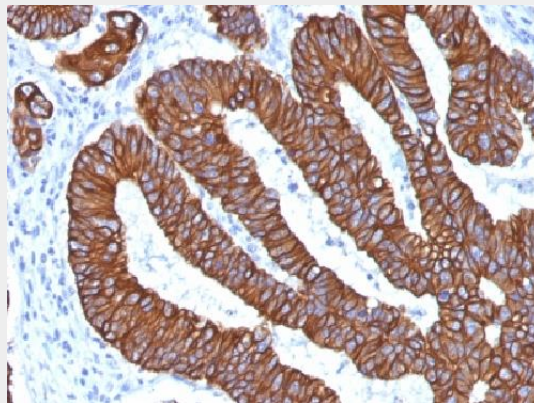
Tissue Location

Observed in muscle fibers accumulating in the costameres of myoplasm at the sarcolemma membrane in structures that contain dystrophin and spectrin. Expressed in gingival mucosa and hard palate of the oral cavity.

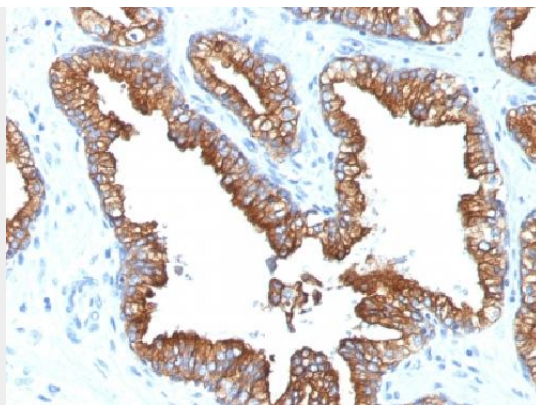
Anti-Cytokeratin 8/18 Antibody - Protocols

Provided below are standard protocols that you may find useful for product applications.

- [Western Blot](#)
- [Blocking Peptides](#)
- [Dot Blot](#)
- [Immunohistochemistry](#)
- [Immunofluorescence](#)
- [Immunoprecipitation](#)
- [Flow Cytometry](#)
- [Cell Culture](#)

Anti-Cytokeratin 8/18 Antibody - Images

Formalin-fixed, paraffin-embedded human Colon Carcinoma stained with Cytokeratin 8/18 Monoclonal Antibody (KRT8.18/1346).



Formalin-fixed, paraffin-embedded human Prostate Carcinoma stained with Cytokeratin 8/18 Monoclonal Antibody (KRT8.18/1346).

Anti-Cytokeratin 8/18 Antibody - Background

Cytokeratin 8 (CK8) belongs to the type II (or B or basic) subfamily of high molecular weight cytokeratins and exists in combination with cytokeratin 18 (CK18). This MAb recognizes all simple epithelia including glandular epithelium, for example thyroid, female breast, gastrointestinal tract, respiratory tract, and urogenital tract including transitional epithelium. All adenocarcinomas and most squamous carcinomas are positive but keratinizing squamous carcinomas are usually negative. This antibody is useful in demonstrating the presence of Paget cells; there is very little keratin 18 in the normal epidermis so only Paget cells are stained.